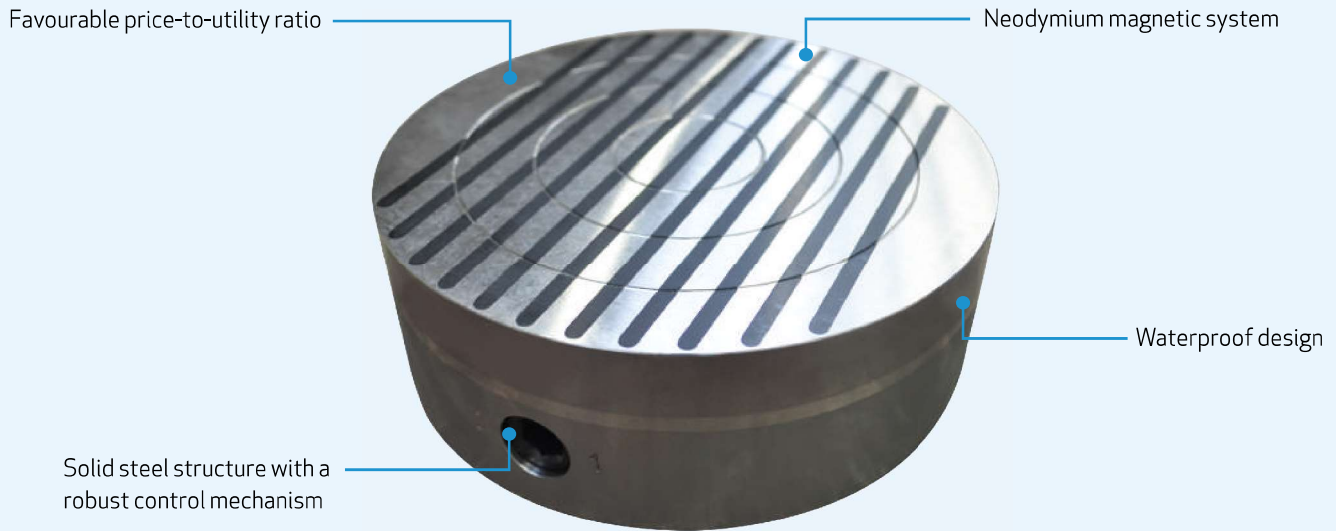


# Permagrip



## When to choose a Permagrip permanent magnetic chuck:

The Permagrip permanent magnetic chuck is an efficient aid for clamping workpieces during circular grinding. The steel base and the compact top plate with a high regrinding limit ensure a long life span.

### APPLICATION



Circular grinding

### TECHNOLOGY



Permanent

### DIAMETER



from 150 mm

### HOLDING FORCE



80 N/cm<sup>2</sup>

### POLES



Parallel

### Important parameters:

Application:	Circular grinding
Technology:	Permanent
Holding force:	80 N/cm <sup>2</sup>
Min. workpiece limit:	35 x 35 x 5 mm
Poles:	Parallel
Regrinding limit:	7 mm
Pole pitch:	T11 7+4 mm (steel/epoxy)

### Use:

- + fine final circular grinding in dry conditions and with cooling emulsion

Model	D (mm)	H (mm)	E (mm)	Weight (kg)
PERM150	150	63	120	8
PERM160	160	63	145	8,5

