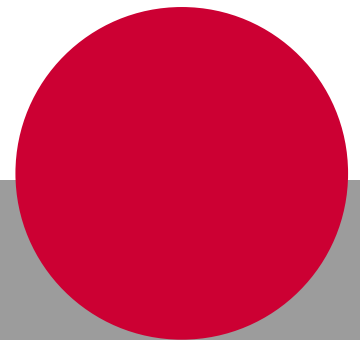


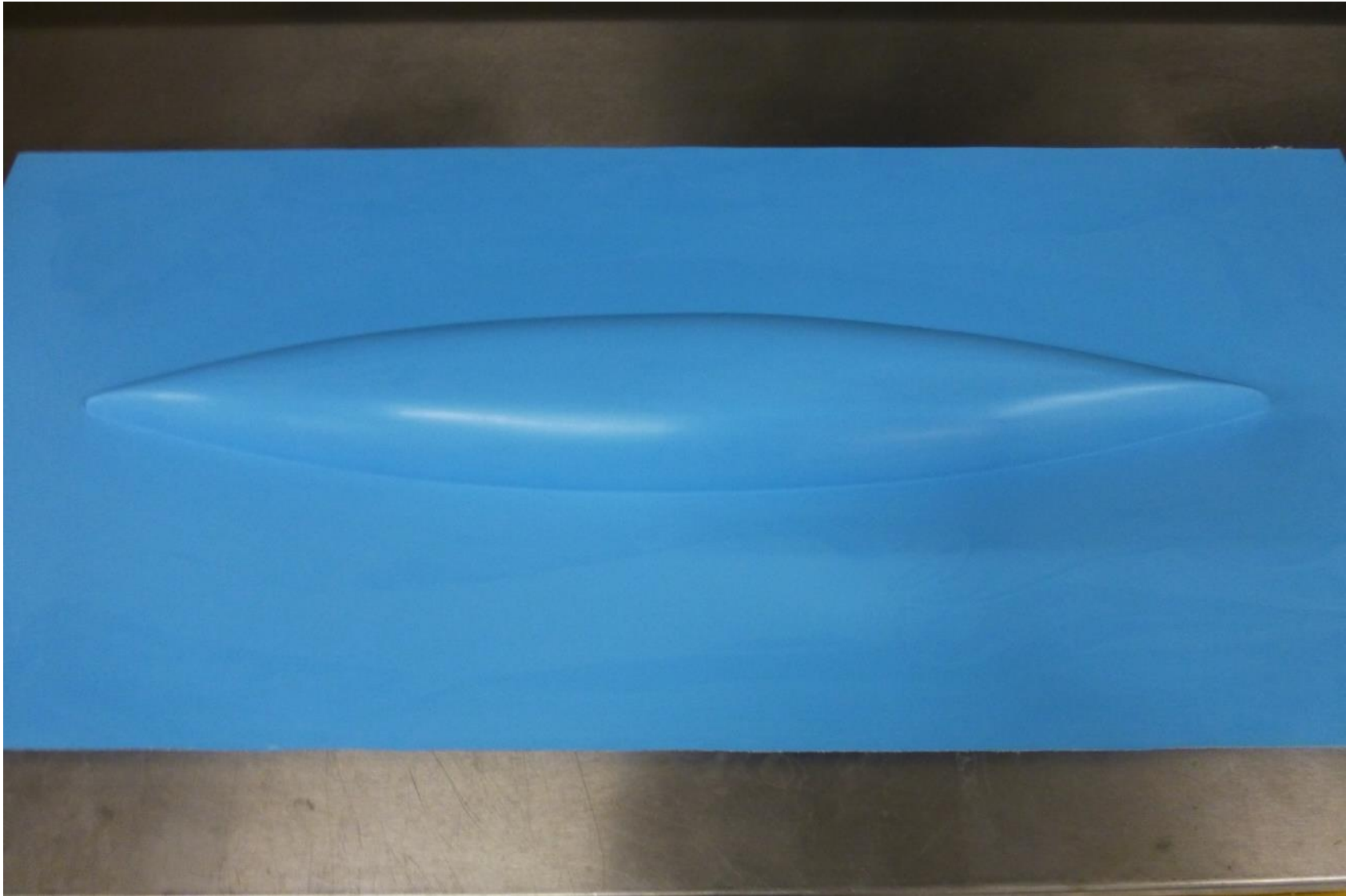
How to use

EG-2105 / EH-2950

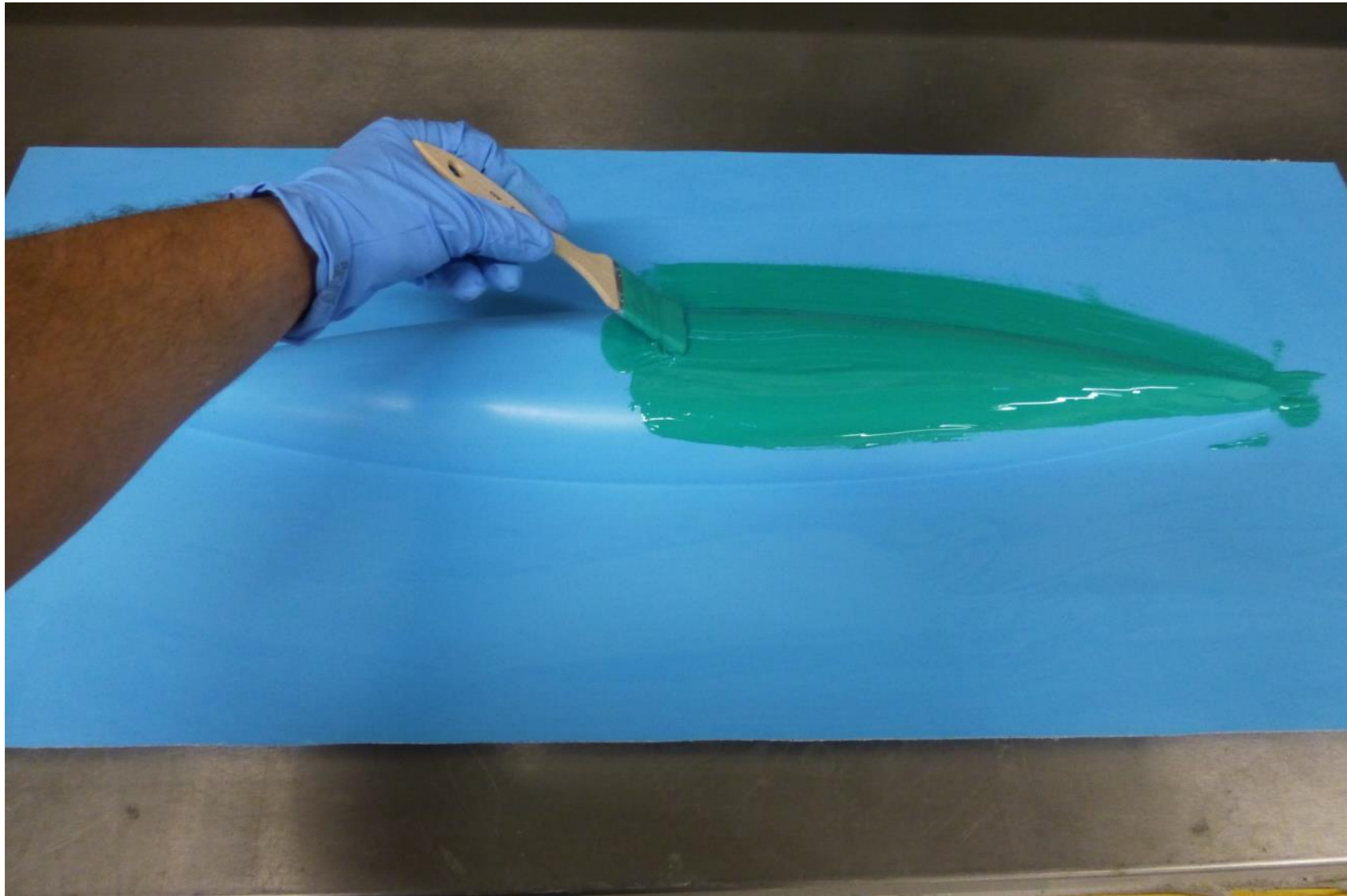
EL-2207-2 / EH-2907-2



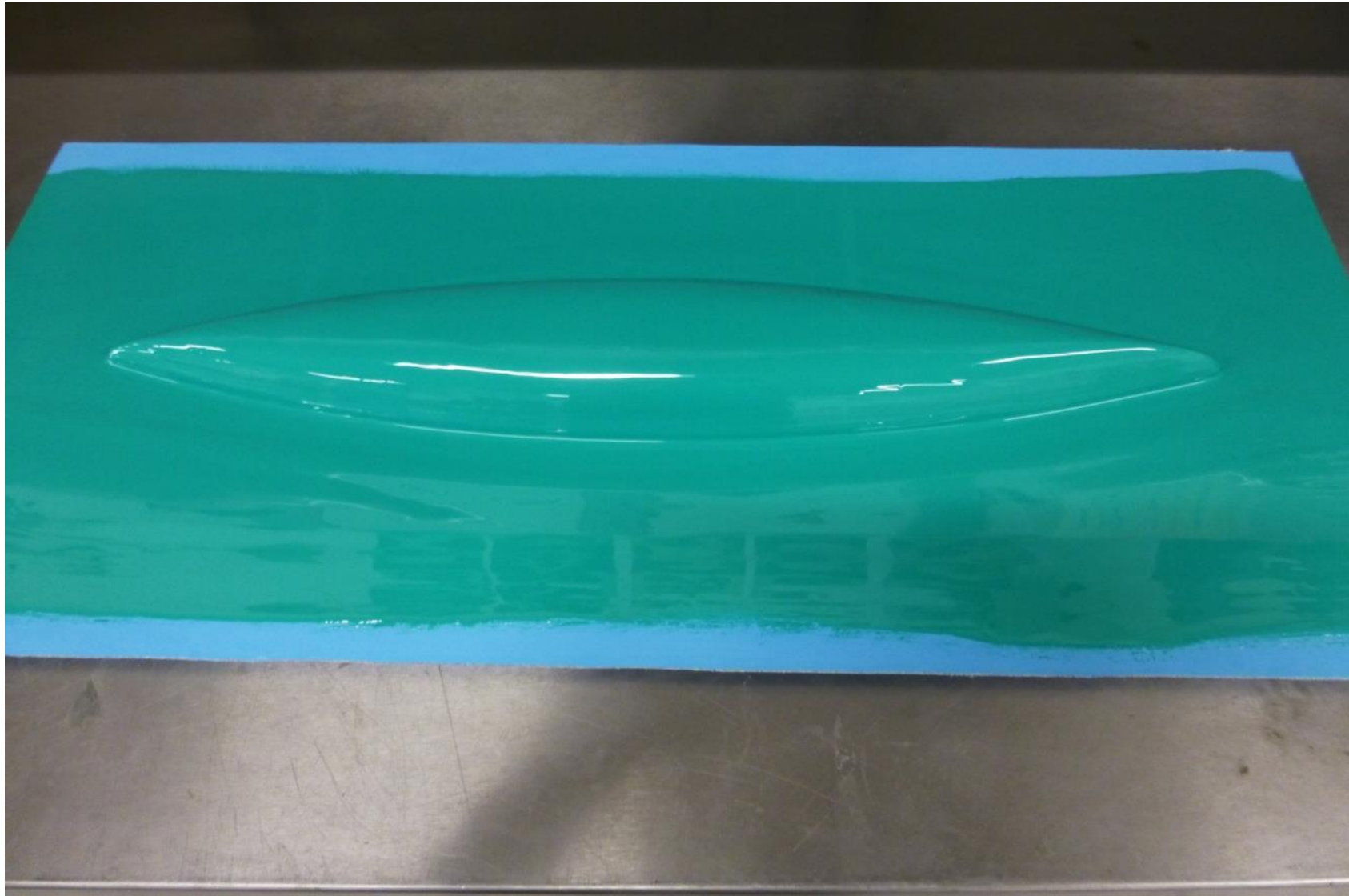
Master, released



Application of Gelcoat EG-2105/EH-2950



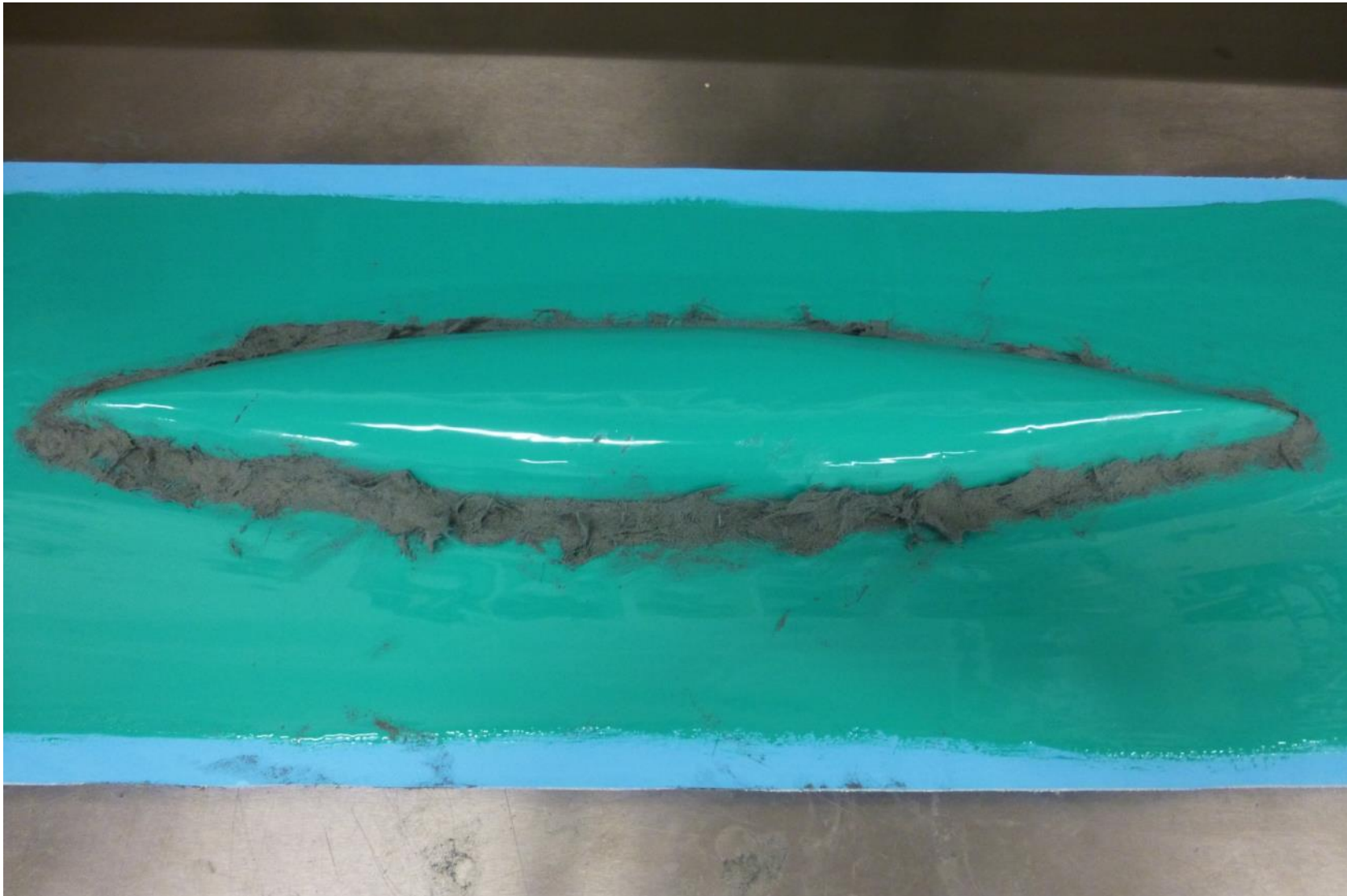
Gelcoat EG-2105/EH-2950, wait until tack time



Kneating of Laminating Paste EL-2207-2/EH-2907-2



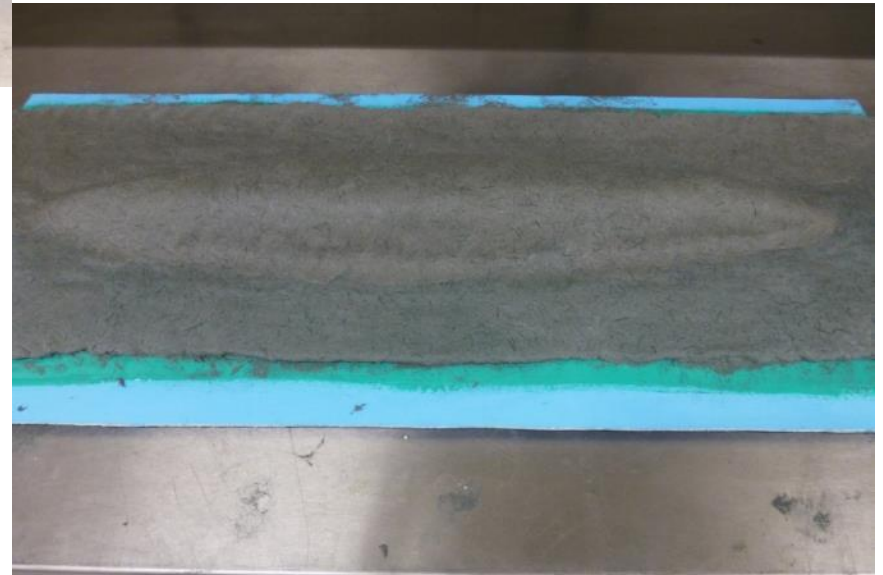
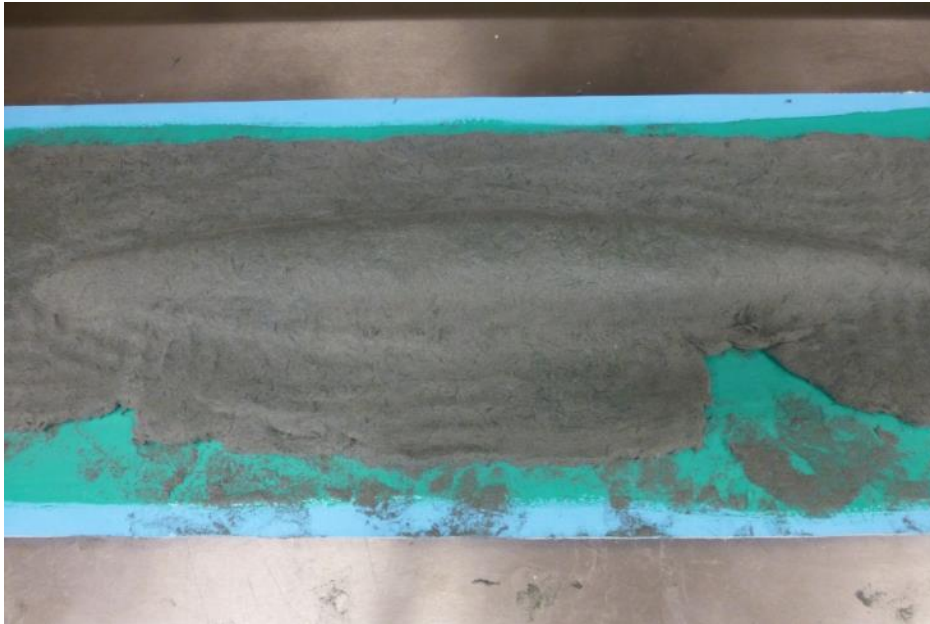
Filling gaps and edges to avoid air entrapment



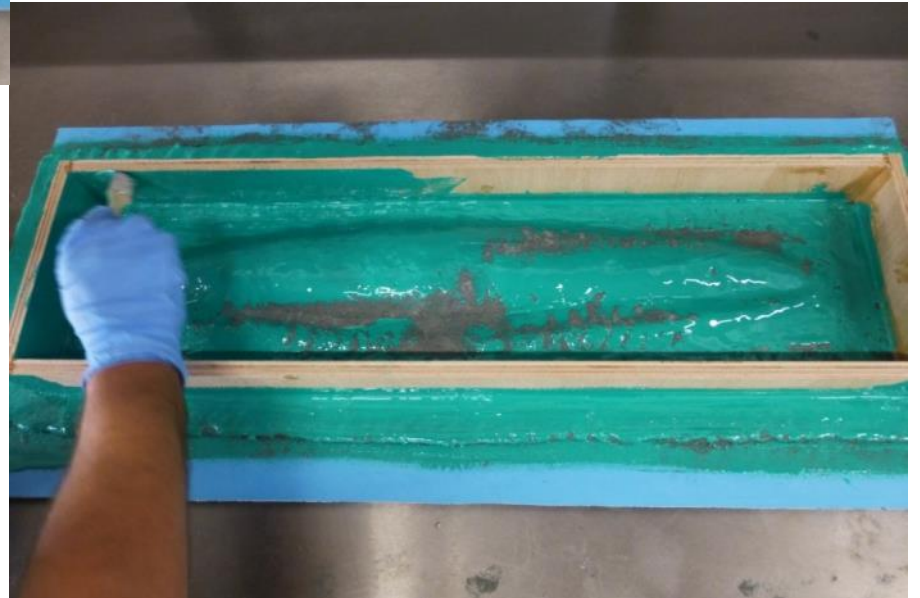
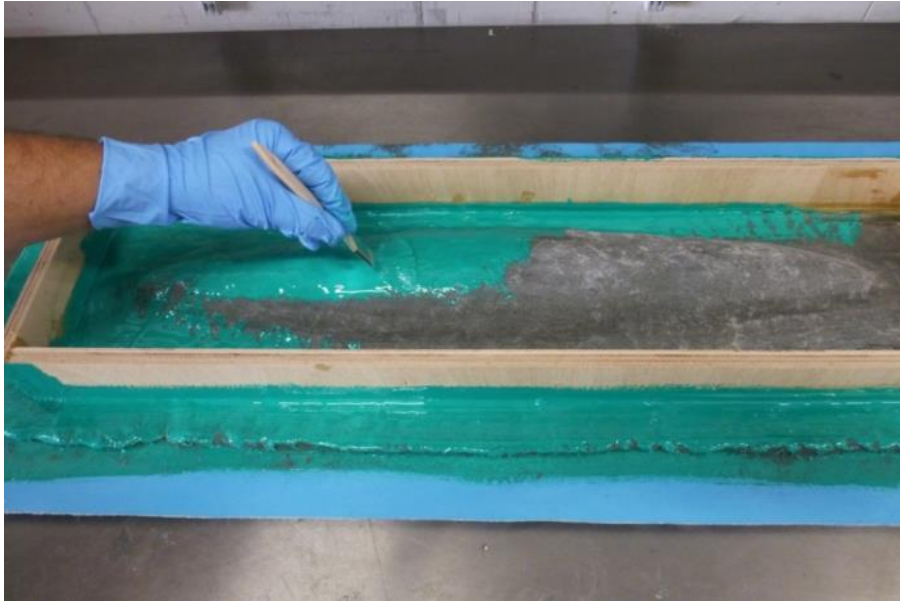
Apply equal thickness of Laminating paste



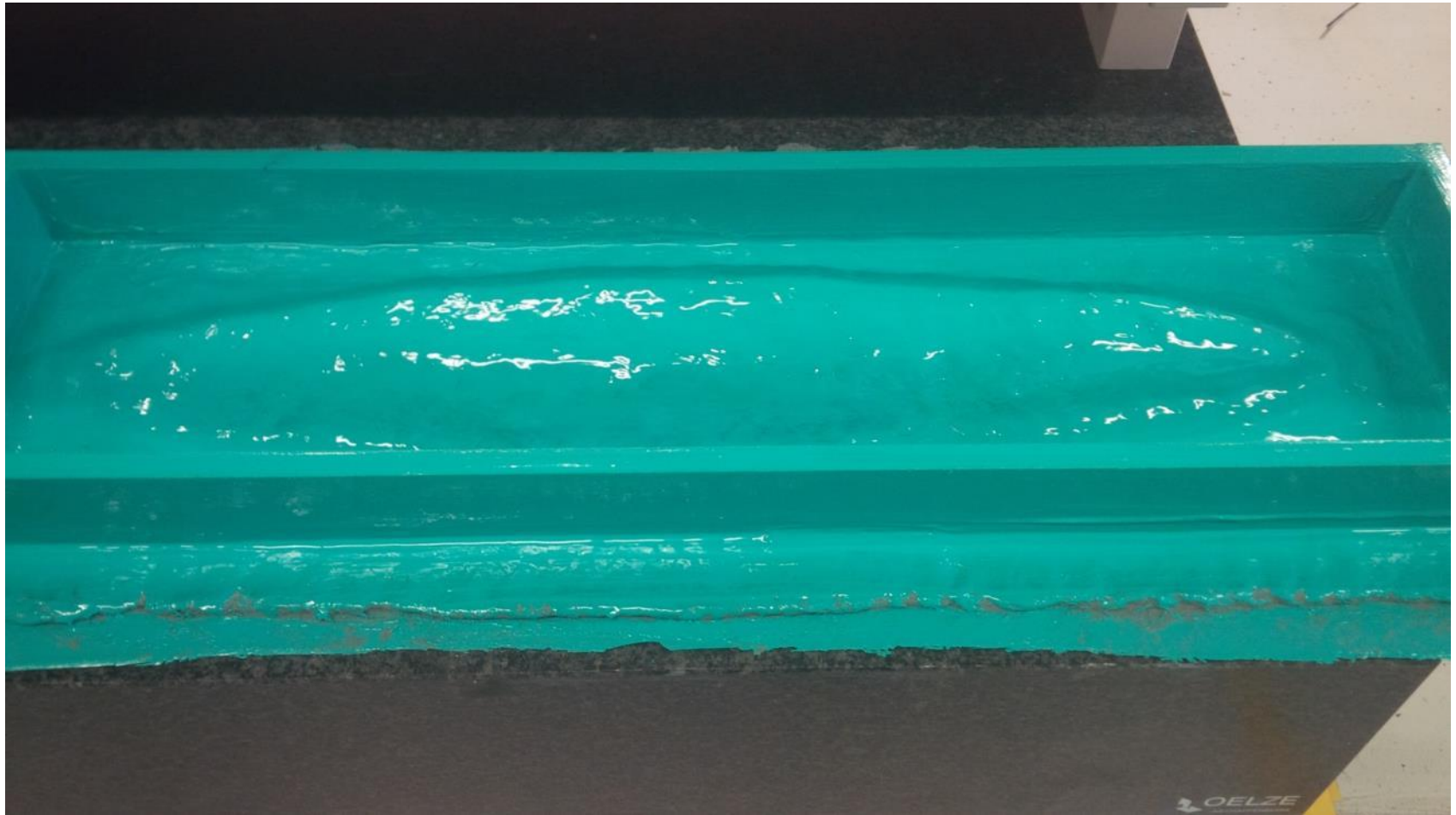
Avoid air entrapment under the Laminating paste



**Attach Support frame out of Multiplex wood.
Symetric build up, by using Gelcoat to cover.**



Finished Mould, ready to trimm.



**Equal thickness, symmetric build up,
stiffness by support frame.**



Finished mould

