

# MODULAR INDUSTRIAL AND WORKSHOP

## VCUUM CLEANERS



Variants:  
SOS 102.1.V  
SOS 102.3.V



SOS 102.1.VP  
SOS 102.3.VP



Accessories: SOS 102.-V  
SOS 102.-VP ▽



SOS 202.6.VP ▷  
▽



△ SOS 302.6.VP

Accessories: SOS 202.6.V  
SOS 202.6.VP  
SOS 302.6.V  
SOS 302.6.VP



**EKO**® **ŠIMKO s.r.o.**  
CZECH REPUBLIC

1. máje 2000, 547 01 Náchod  
Tel/fax: +420 491 424 280-81  
E-mail: [ekosimko@quick.cz](mailto:ekosimko@quick.cz)  
[www.ekosimko.cz](http://www.ekosimko.cz)

The producer reserves the privilege of changes given by the product base development itselfes.

# MODULAR EXHAUSTERS SOS

FOR CLEAR AIR AND SAVING HEAT IN THE WORKPLACES

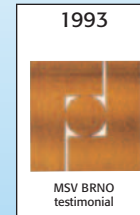


*Saves your  
breath and money*



1994

Golden medal  
WELDING - BRNO



1993

MSV BRNO  
testimonial



Quality of delivery  
certificated  
**CLPR**  
CERTIFIKACE  
ISO 9001



# MULTI-PURPOSE MODULAR SYSTEM FOR IMPURITIES EXHAUST SOS

minimal operating costs • zero losses of heat • mobility • low weight • simple operation • multi-purpose application • extra high lifetime of filters and their easy regeneration • saving

## SOS 101.-S



Version  
SOS 102.1.S  
SOS 102.2.S  
SOS 102.3.S



SOS 102.1.SH  
SOS 102.2.SH  
SOS 102.3.SH  
With self-supporting nozzle



## SOS 202.-S

Version  
SOS 202.1.S  
SOS 202.2.S



SOS 202.1.SH  
SOS 202.2.SH



## MULTI-PURPOSE MODULAR EXHAUSTERS FOR WELDING

### SOS 302.-SH



Version  
SOS 302.1.SH  
SOS 302.2.SH



Version  
SOS 302.1.S  
SOS 302.2.S



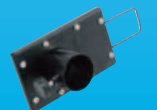
Branch piece with governing valves RZ



Branch piece RB



Governing valve RK 2



# TECHNICAL CHARACTERISTIC

## BASIC STRUCTURE OF EXHAUSTERS:

Box of drive – box of filtration – bin with cyclone.  
 Circuit of air is separated from electromotor it has its own cooling circuit. The inlet and the exhaust is thru the tube by SOS101, by SOS 202, 302 thru the tube or grating.  
 The filters have pockets design and they are fixed with springs. The filters serves for inteception of aerosols and dusts size to 0,3 micrometer. The filters are for mechanical impurities or for machanical and chemical impurities as active oxygen or NxO. Filtered air goes back to the room or outside of the room.

## VARIANTS OF DRIVE BOX

- SOS -----
- 1 - without power control
  - 2 - with power control, control of stoptime after arc extinction by electromagnetic field of welding current
  - 3 - with power control
  - 4 - without power control
  - 6 - step power control

## BASIC STRUCTURE OF VACUUM CLEANERS:

Box of drive – box of filtratin – bin with cyclone – chasis with floor nozzle or without.

**SAVING BUY  
-work room set**



Exhauster type	Input (W)		Maximal levels of rate * of air flow m <sup>3</sup> / ± 10%	Maximal underpressure (kPa)	Diameter of inlet branch (mm)	Rated current (A)	Voltage rating (V)	Height (cm)	Width (cm)	Length / depth (cm)	Cross sec. of filtr. module (cm)	Weight (kg)	Filter 1 th. stage	Filter 2 nd.+ 3 rd. stage	Noise level (dba)	Power control	Application
SOS 102.1.S SOS 102.2.S SOS 102.3.S	1000	200	23	40	5,5	230	112	32	32	32	32	26	3 pockets filter filter RUNO PES, area = 0,5 m <sup>2</sup>	6 pockets filter FIAB area = 1,0 m <sup>2</sup>	70	N Y	Welding
SOS 202.1.S	2400	380	23	80	5,8	400	116	45	45	45	45	46	5 pockets filter filter RUNO PES, area = 1,1 m <sup>2</sup>	9 pockets filter FIAB area = 2,0 m <sup>2</sup>	70	N Y	Welding- -central exhaust for 3 work places
SOS 202.1.SH	2400	380	23	80	5,8	400	118	45	71	45	45	72	5 pockets filter RUNO PES, area = 1,1 m <sup>2</sup>	9 pockets filter FIAB area = 2,0 m <sup>2</sup>	70	N Y	Welding
SOS 302.1.S SOS 302.2.S	3600	550	23	80	5,8	400	117	55	55	55	55	72	6 pockets filter RUNO PES, area = 1,7 m <sup>2</sup>	12 pockets filter FIAB area = 3,2 m <sup>2</sup>	74	N Y	Welding- -central exhaust for 5 work places
SOS 302.1.SH SOS 302.2.SH	3600	550	23	80	5,8	400	118	55	81	55	55	95	6 pockets filtr RUNO PES, area = 1,7 m <sup>2</sup>	12 pockets filter FIAB area = 3,25 m <sup>2</sup>	74	N Y	Welding
SOS 102.1.B SOS 102.3.B SOS 102.4.B	1200	200	23	40	5,8	230	105 122	32	32	32	24 27	24 27	6 pockets FITE-VIG 500,VIKA-FIL, FIAB FLP 3, area = 1,0 m <sup>2</sup>	VOLUME CARBOTEX 17,5 or 30,1 dm <sup>3</sup>	70	N Y N	B Grinding B/P Soldering
SOS 202.1.B SOS 202.6.B	2400	380	23	80	5,8	400	105 122	45	45	45	43 47	43 47	9 pockets FITE-VIG 500,VIKA-FIL, FIAB FLP 3, area = 3,2 m <sup>2</sup>	VOLUME CARBOTEX 34,4 or 60,7 dm <sup>3</sup>	70	N Y	B Grinding B/P Soldering
SOS 302.1.B	3600	550	23	80	5,8	400	106 124	55	55	55	55 62	55 62	8 pockets FITE-VIG 500,VIKA-FIL, FIAB FLP 3, area = 3,5 m <sup>2</sup>	VOLUME CARBOTEX 51,4 or 90,7 dm <sup>3</sup>	74	N	B Grinding B/P Soldering cleaning
SOS 102.1.V SOS 102.3.V	1200	200	23	40	5,8	230	93	32	32	32	32	24	6 pockets filter FITEVIG 500/VE area = 0,7 m <sup>2</sup>		70	N Y	Workshop cleaning cleaning of machinery
SOS 102.1.VP SOS 102.3.VP	1200	200	23	40	5,8	230	110	62	72	32	32	41	6 pockets filter FITEVIG 500/VE area = 0,7 m <sup>2</sup>		70	N Y	Workshop cleaning cleaning of machinery
SOS 202.6.V	2400	380	23	50	11,5	230	126	71	67	45	45	66	9 pockets filter FITEVIG 500/VE area = 1,5 m <sup>2</sup>		70	Y	cleaning, cleaning of machinery
SOS 202.6.VP	2400	380	23	50	11,5	230	126	82	81	45	45	72	9 pockets filter FITEVIG 500/VE area = 1,5 m <sup>2</sup>		70	Y	Hall cleaning cleaning of machinery
SOS 302.6.V	3600	550	23	50	5,8	400	129	81	77	55	55	83	6 pockets filter FITEVIG 500/VE area = 1,7 m <sup>2</sup>		74	Y	cleaning, cleaning of machinery
SOS 302.6.VP	3600	550	23	50	5,8	400	129	92	90	55	55	89	6 pockets filter FITEVIG 500/VE area = 1,7 m <sup>2</sup>		74	Y	Hall cleaning cleaning of machinery

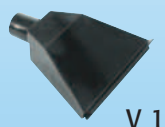
buy • additional later buy possibility of modules according to changing needs • possibility to change kind of application of the exhauster (it means only change the filter modul or only the filter)

• it is situable for single-shift operation • possibility power control • unusual universality of their application and so more single-purpose exhausters and vacuum cleaners can be substituted

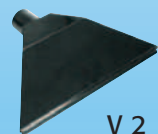
## ACCESSORIES



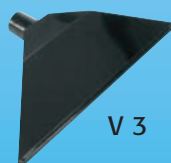
Torch for welding with exhaust of impurities EKO 160-200-400



V 1



V 2



V 3



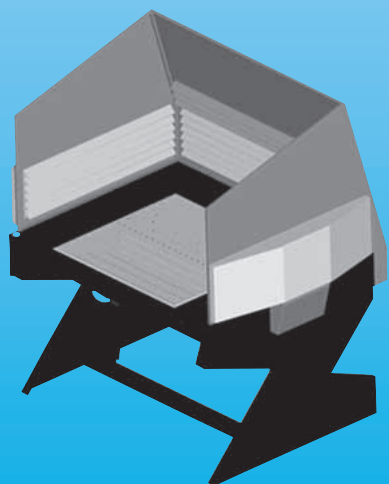
SH 7



SH 6



SH 5



Modular exhaust work tables EKO ST

## MULTI-PURPOSE MODULAR EXHAUSTERS FOR GRINDING

### SOS 102.-.B

Version  
SOS 102.1.B  
SOS 102.3.B  
SOS 102.4.B



### SOS 202.-.B

Version  
SOS 202.1.B  
SOS 202.6.B



### SOS 302.-.B

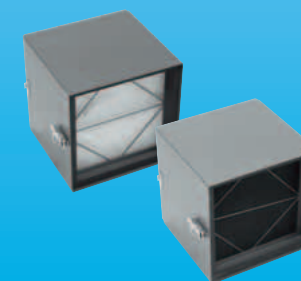
Version  
SOS 302.1.B  
SOS 302.6.B



Accessories for grinding and soldering



Activ filters



Bin with cyclone

