

## Sound-proof Central Granulator

SG-7090

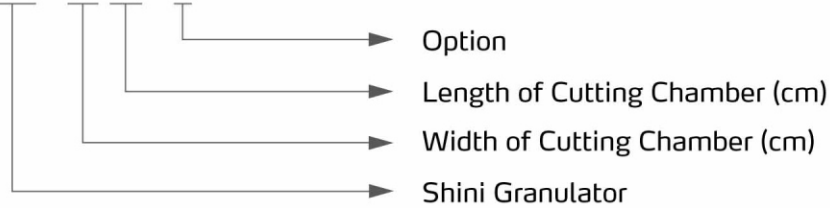


Refer carefully to this manual before operation.

# SG-70 Series

## ■ Coding Principle

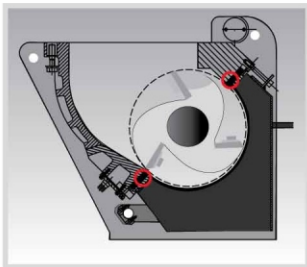
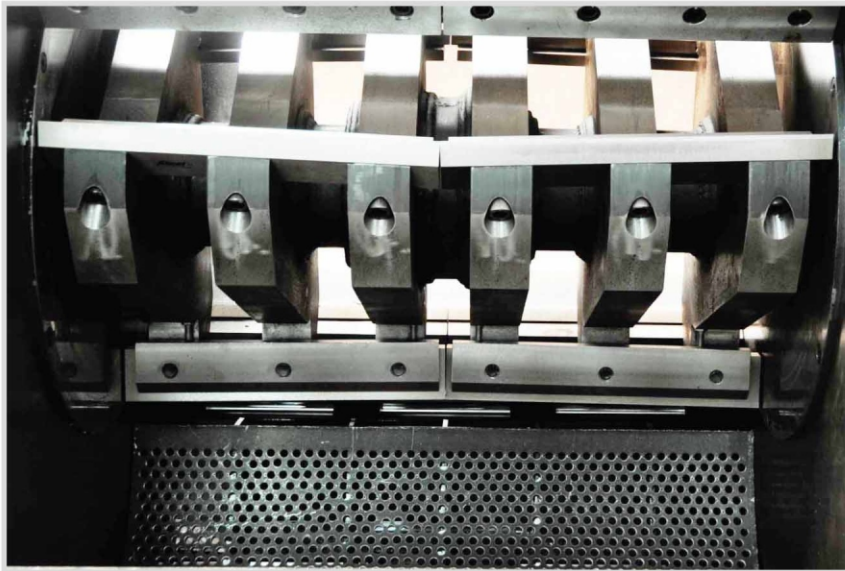
SG - xx xx - x



## ■ Features

### ● Fine finishing cutting chamber and convenient cutters installation

Components in the cutting chamber have been finely finished by CNC lathe, enjoying high accuracy. Besides, the machine is equipped with presetting knife jig, in which adjustment of cutters can be made. Therefore, the installation and adjustment of cutters becomes much easier, and the maintenance time of the machine can be saved.



Standard for Two Fixed plus  
Three Rotating Blades  
(Low Cutting Point)



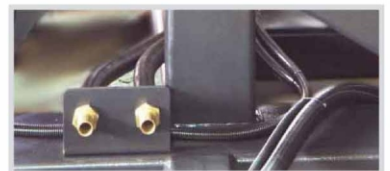
### ● Sound-proofing machine

The machine adopts enclosed soundproof box, and in the positions that may make noises, there are sound-absorbing cotton, which can efficiently reduce the noises made in the cutting process.



### ● Cooling device of cutting chamber

Cooling water device on the rear plate of cutting chamber can reduce the room temperature of cutting chamber and avoid the melt of regrind materials.



- **Automatic conveying device**

The machine is equipped with automatic conveying device of regrind materials, which is able to increase the conveying efficiency; materials are conveyed by blowers, which promote airflow and achieve air cooling of the cutting chamber to some extent. Thus, the room temperature of the cutting chamber can be reduced.



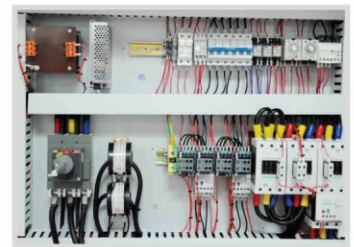
- **High-efficiency cutting motor**

The machine adopts Siemens high-efficiency motor, which has stable performance as well as safe operation and helps energy consumption.



- **Multiple safety protection of control**

Control circuit meets CE standard, and it has multiple protections including protection of motor overload, short circuit, phase default and phase order detection, ensuring safe operation of the machine.

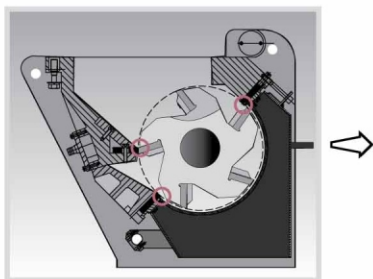


- **Application**

SG-70 series granulators are applicable to granulate various kinds of plastic materials from injection molding, blow molding or extrusion molding.

- **Options**

**Three Fixed plus Five Rotating Blades (High Cutting Point)**

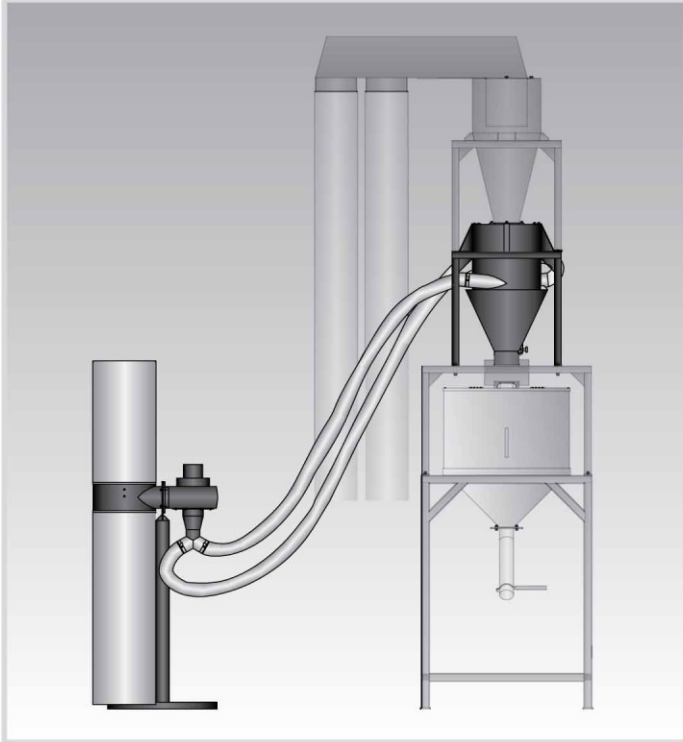


High cutting point fixed blades model has small inlet space and initially high cutting point. Thus its cutting force is not so strong, which enhances the reliability of cutting solid material. This design is suitable for granulating big solid material with thick wall and sheet.



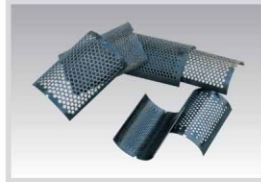
# SG-70 Series

## Cyclone dust separator conveying device



Dust Separator can separate the dust in the regrind for immediate recycle use. The dust will be kept in filter bag, thus working environment will remain clean. This device ensures full use of regrind to avoid material wasting and enhance the economy returns. Add "DS" at the end of the model code.

## Special Screens



Special screen mesh sizes:  $\Phi 10, \Phi 14$ (mm). Add "SS + screen diameter" at the end of the model code, e.g.:  $\Phi 10$ mm, add "SS10".

## Full-receiver Alarm Device



Full-receive alarm device helps to achieve unmanned operation and no materials will be wasted. Whenever the regrind level reaches the motor position, the machine will be forced to stop and be cut off via its sensor, thus stop the granulator and warn the user by sounding an alarm. Add "FAD" at the end of the model code.

## Material Side Feed Pipe

The design of feeding hopper of traditional granulators is not suitable for long pipes and section bars. We have designed material side feed pipe for convenient feeding of long materials. Add "SF" at the end of the model code.

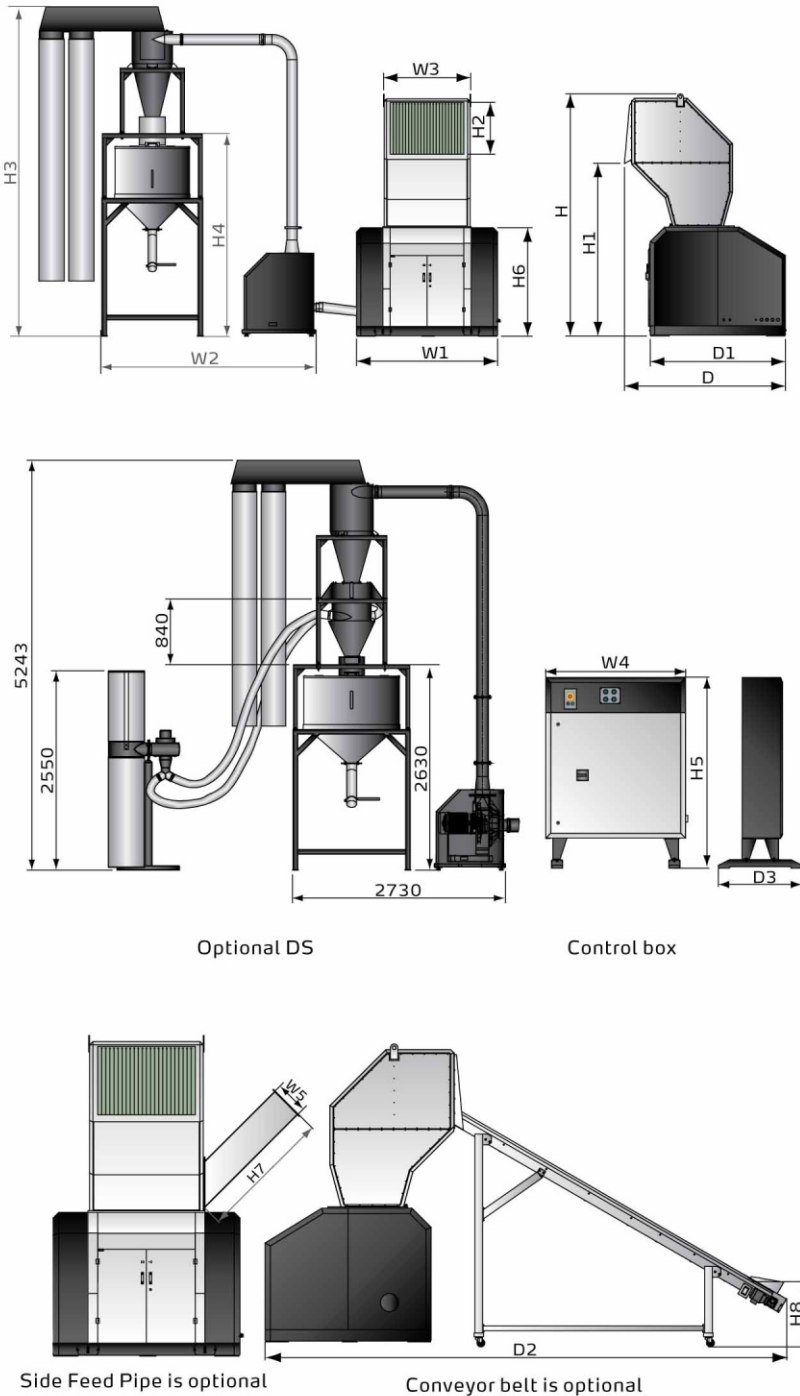


## Feeding Hopper for Conveyor

Material feeding for traditional large granulators is quite a difficult matter. They are generally installed at a lower place or a platform must be built for material feeding. Shini has particularly designed the belt conveyor to easily convey the material into the cutting chamber of SG-70 series. Add "BCF" at the end of the model code.



## Outline Drawings



## Specifications

Model	SG-7090	SG-70120		
Motor Power (kW, 50/60Hz)	75	90		
Rotating Speed (rpm, 50/60Hz)	525	525		
Conveying Blower (kW, 50/60Hz)	7.5/8.6	7.5/8.6		
Handspike Motor Power (kW, 50/60Hz)	1.5	1.5		
Material of Blades	SKD11	SKD11		
Quantity of Fixed Blades (Optional)	2×2 (2×3)	2×2 (2×3)		
Quantity of Rotating Blades (Optional)	3×2 (5×2)	3×2 (5×2)		
Cutting Chamber	mm	700 × 900	700 × 1200	
	inch	27.6 × 35.4	27.6 × 47.2	
Max. Output	kg/hr	1300	1800	
	lb/hr	2866	3968	
Noise Level dB(A)	115	115		
Dimension	H (mm)	mm	3950	3950
		inch	155.5	155.5
	H1 (mm)	mm	2890	2890
		inch	113.8	113.8
	H2 (mm)	mm	840	840
		inch	33	33
	H3 (mm)	mm	4403	4403
		inch	173	173
	H4 (mm)	mm	2630	2630
		inch	103.5	103.5
	H5 (mm)	mm	1370	1370
		inch	53.9	53.9
	H6 (mm)	mm	1720	1720
		inch	67.7	67.7
	H7 (mm)	mm	1419	1419
		inch	55.9	55.9
	H8 (mm)	mm	846	846
		inch	33.3	33.3
	W1 (mm)	mm	2000	2300
		inch	78.7	90.6
W2 (mm)	mm	2730	2730	
	inch	107.5	107.5	
W3 (mm)	mm	900	1200	
	inch	35.4	47.2	
W4 (mm)	mm	1000	1000	
	inch	39.3	39.3	
W5 (mm)	mm	350x350	350x350	
	inch	13.8x13.8	13.8x13.8	
D (mm)	mm	2630	2630	
	inch	103.5	103.5	
D1 (mm)	mm	2200	2200	
	inch	86.6	86.6	
D2 (mm)	mm	6840	6840	
	inch	269.3	269.3	
D3 (mm)	mm	600	600	
	inch	23.6	23.6	
Weight (kg)	kg	4500	5000	
	lb	9,921	11,023	

- Notes: 1) SKD11 is steel grade of Japanese JIS standard.  
 2) Maximum output is subject to the diameter and material of screen mesh. For granulating frame and shell material, maximum output will be reduced about 50%.  
 3) Noise level varies with different materials and motor type.  
 4) Noise level is tested under conditions of 1m/39.9' around the machine and 1.6m/63' from the ground.  
 5) To avoid plastics from sticking to the blades, all materials should be crushed at normal temperature.  
 6) Power supply: 3Φ, 230/400/460/575VAC, 50/60Hz.

## Shini Group

Addr: No. 23, Minhe St., Shulin Dist.,  
New Taipei, Taiwan

Tel: +886 2 2680 9119

Fax: +886 2 2680 9229

Email: [shini@shini.com](mailto:shini@shini.com)

### Factories:

- Taiwan
- Dongguan
- Pinghu
- Ningbo
- Chongqing
- Pune