

See for yourself. To meet your
practical circumstances you are
only one «click» away from us.

Visit our homepage at
www.f-tool.com

Head office:

F-Tool International AG • Oberdorf 6 • P.O. Box • CH-5040 Schöftland • Switzerland •
Phone +41 (0)62 739 00 30 • Fax +41 (0)62 739 00 39 • E-Mail: info@f-tool.com

Subsidiary in Germany:

F-Tool GmbH • Gewerbepark Breisgau • Freiburger Strasse 19 • DE-79427 Eschbach •
Phone +49 (0)7634/504883-0 • Fax +49 (0)7634/504883-15 • E-Mail: info@f-tool.de

Subsidiary in Thailand:

F-Tool (Thailand) Co., Ltd. • 12/3 Moo 10 • Klong-Khoi, Pak-Kred • Nonthaburi 11120 • Thailand •
Phone +66 (0)84 757 66 62-3 • Fax +66 (0)81 838 21 40 • E-Mail: ftoolth@ksc.th.com

1. General

- 1.1 The purchase contract will be concluded by a written order and the written order confirmation from the supplier. Offers which do not include a deadline for acceptance will not be binding.

2. Scope of the goods and services

- 2.1 The supplier's goods and services will be listed in the order confirmation. The supplier will anytime be entitled to modify products in order to improve them.

3. Plans, photographs and technical documents

- 3.1 In the absence of any agreement to the contrary, brochures and catalogues will not be binding. Details in technical documents will only be binding if they are expressly guaranteed. Some products are procured from selected first-class sub-suppliers. Published pictures or versions may differ from the sales documents.

4. Regulations in the destination country and safeguards

- 4.1 The purchaser must inform the supplier of the regulations and standards of the country of destination relating to the provision of goods and services, the business and health and safety at work, at the latest when placing the order.
- 4.2 In the absence of any agreement to the contrary, the goods and services will comply with regulations and standards at the registered office of the purchaser, of which the purchaser has informed the supplier in accordance with no. 4.1. Additional or other safeguards will also be provided insofar as this has been agreed.

5. Prices

- 5.1 The price list valid on the date of the order will determine the prices. In the absence of any agreement to the contrary, all prices will be net, ex works, and exclusive of carriage, customs clearance, packaging and VAT and in Swiss Francs or euros, net of any deduction (EXW).
The purchaser will be responsible for all incidental costs, e.g. for freight, insurance, export, transit, import and other licenses and certification. The purchaser will also be responsible for all taxes, charges, fees, duty, etc. of any nature whatsoever which may be raised in connection with the contract or refund them to the supplier on production of corresponding evidence, if the latter has become liable for payment thereof.
- 5.2 The supplier reserves the right to amend the prices, should there be a change in rates of pay, prices of materials or suppliers' prices between the date of the order and performance in accordance with the contract.

6. Payment terms

- 6.1 In the absence of any express agreement, prepayment will be due upon readiness to delivery.
- 6.2 Otherwise, the payment deadline for contracting partners will be 30 days net from the date of the invoice, in the absence of any agreement to the contrary. In the event of arrears of payment, the purchaser must anticipate 8% interest on arrears from the date on which payment is due. The right to claim further compensation remains reserved.

7. Reservation of title

- 7.1 The supplier will retain title to all its goods until it has received full payments in accordance with the contract. The purchaser authorises with the signing of the order and so the acceptance of these General Terms and Conditions of Delivery the supplier, if necessary with the regulations of the country of destination, to register such a retention of title in the appropriate register.

8. Delivery date / delivery conditions

- 8.1 The supplier will endeavour to deliver the standard products from stock on a specific date. The purchaser must refer to the order confirmation for deliveries with delivery dates.
- 8.2 The EXW delivery terms must be interpreted in accordance with the current applicable Incoterms (currently Incoterms 2000).
- 8.3 The purchaser will have no rights or claims to remuneration as a result of goods or services being late. However, it reserves the right to cancel the contract.
- 8.4 The minimum charge for goods or services is CHF 50.00.

9. Packaging

- 9.1 The supplier will issue a separate invoice for packaging.

10. Inspection and acceptance of goods and services

- 10.1 Insofar as is standard practice, the supplier will inspect the goods and services prior to despatch and guarantees that they are complete and of good quality.
- 10.2 The purchaser must inspect the goods and services within a reasonable period and notify the supplier of any detected defects in writing without delay. Should it fail to do so, the goods and services will be deemed to have been accepted.

- 10.3 The purchaser has a 30-day return, exchange or money-back guarantee for standard list products. This concerns all standard list products which are purchased regularly, not customized, not used or modified and in their complete, original packaging. The purchaser will be responsible for the return freight costs.

11. Guarantee, liability for defects

- 11.1 The *guarantee period* is 30 days, as stated in no. 10.3, in the absence of any stipulation to the contrary in the delivery documents or in legislation. The period starts at the date of delivery, respective with the writing of the delivery note.
- 11.2 *Liability for material defects, design flaws or shortcomings in implementation*
The supplier undertakes to repair or replace any parts of its goods which verifiably become defective or unusable as a result of material defects, design flaws or shortcomings in completion up to the end of the guarantee period, as soon as possible on written demand by the purchaser. Characteristics are only warranted, if they are mentioned expressly in the order confirmation or in the specifications. The confirmation counts until the expiration of the guarantee period. Are the warranted characteristics not, or only partially fulfilled, the purchaser has the right of immediate amendment of the supplier. For this, the purchaser has to afford the supplier the needed time and opportunity.
- 11.3 *Exclusions of liability for defects*
Damage will be excluded from the supplier's guarantee if it is not verifiably a consequence of poor material, design flaws or shortcomings in completion, e.g. a result of wear and tear, poor maintenance, failure to observe operating instructions, overloading, inappropriate operating resources, chemical or electrolytic effects, structural or installation work not carried out by the supplier, and other reasons for which the supplier is not responsible.
- 11.4 *Sub-suppliers' goods and services*
The supplier will only guarantee goods and services of sub-suppliers within the scope of the guarantee obligations of the sub-suppliers in question.

12. Exchange procedure

- 12.1 Should the goods supplied not comply with the guarantee undertaking of the supplier / manufacturer / sub-supplier, or should the delivery be incomplete, the following steps must be taken:
- The supplier must be contacted and claims asserted in writing under guarantee for defects or missing or wrongly delivered parts.
 - All returns will undergo a strict incoming goods inspection. Returned goods must be complete, in the original packaging and be accompanied by the appropriate documents, fault reports, guarantee cards and accessories.
- 12.2 The purchaser will be responsible for the return freight costs.
- 12.3 15% of the list price plus repair costs will be charged for outlay for returns which are incomplete or are not defective.
- 12.4 Replacement parts will be charged as standard and the returns credited with a 'Credit Note' after inspection.

13. Preclusion of further liability by the supplier

- 13.1 All cases of breach of contract and their legal consequences, and all claims by the customer, irrespective of the legal basis on which they are asserted, are covered conclusively by these terms and conditions. In particular, all claims for compensation, a reduction and cancellation of the contract which are not expressly stipulated are excluded. Under no circumstances will claims for compensation by the customer be valid for damage which does not occur to the delivered item itself, such as loss of production, use, orders, profit or other direct or indirect losses. Preclusion of liability will not apply to unlawful intent or gross negligence of the supplier, but will also apply to unlawful intent or gross negligence of ancillary persons. In other respects, this preclusion of liability will not apply if it is contrary to legislation.

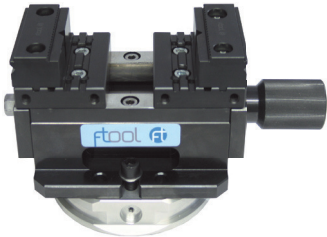
14. Court of jurisdiction and applicable law

- 14.1 **The court of jurisdiction for the customer and the supplier will be the registered office of the supplier.**
However, the supplier will be entitled to take legal action against the customer at its registered office.
- 14.2 The legal relationship will be governed by substantive Swiss law.

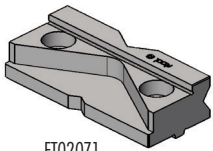
F-Tool CentroClamp 180UP



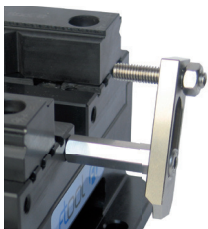
FT 02063



FT 02065



FT 02071

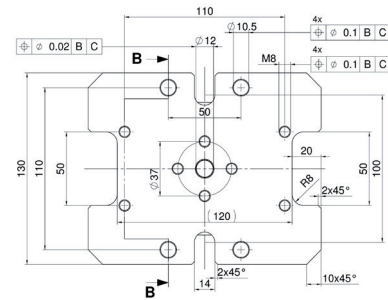
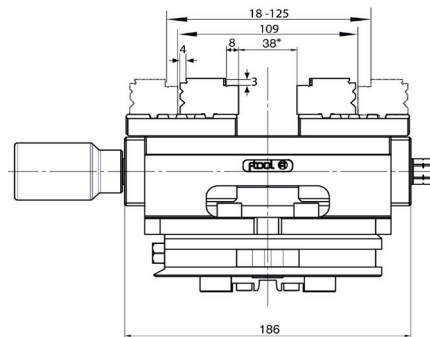
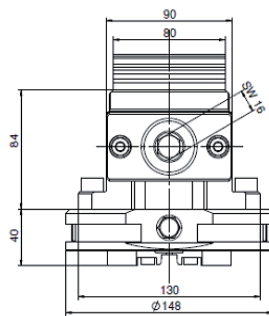


FT 02104

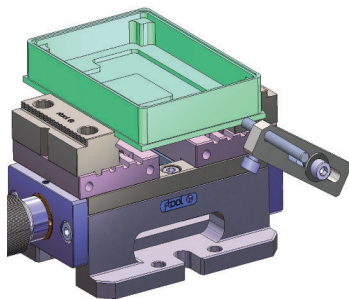
F-Tool CentroClamp 180UP

- Maximum clamping power 18kN
- Maximum Clamping travel 38mm
- Hardened, ground guide rails
- exchangeable, hardened Clamping jaw with grip
- Strong spindle with acme thread 26 x 3mm
- Repeatability: +/- 0.01mm
- Clamping range 0 -125mm (163mm)
- Adjustable zero point
- Reference hole with centering pin dm12h7mm
- Compact and robust construction

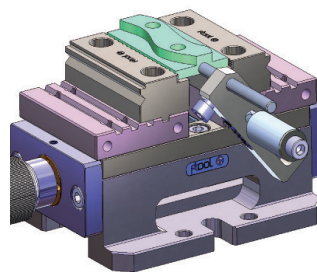
Article no.	Article	Quantity	Weight	Code
FT 02063	Ftool CentroClamp 180-UP-80 with grip clamping jaws	1 piece	11.40 kg	P
FT 02064	Ftool CentroClamp 180-UP-80 basic (without clamping jaws)	1 piece	10.00 kg	P
FT 02065	Ftool CentroClamp 180-UP-80 with pallet ER-PP 148	1 piece	13.70 kg	P
FT 02069	Ftool grip clamping jaws UP-80	Set of 2 pieces	2.00 kg	P
FT 02071	Ftool universal clamping jaws UP-80	Set of 2 pieces	2.00 kg	P
FT 02104	Ftool stopper 180-UP-80	1 piece	0.13 kg	P



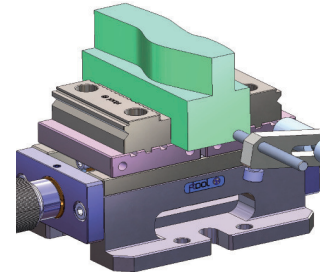
Example of use:



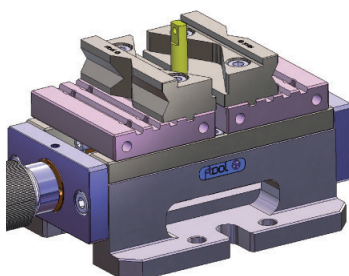
Work piece 110 x 160 x 30mm



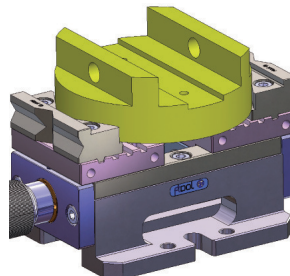
Work piece 40 x 80 x 12mm



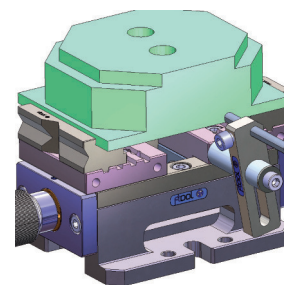
Work piece 50 x 128 x 70mm



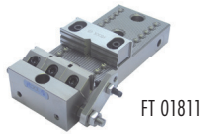
Work piece Ø 10 x 40mm



Work piece Ø 140 x 60mm



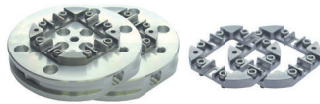
Work piece 160 x 120 x 50mm



FT 01811



FT 01074



FT 01949

FT 01835

FT 01043



FT 01483

F-Tool 5S-PowerSet

The 5S-PowerSet is a wide clamping element set, suited for the 5-side machining of work pieces on 3-axis milling machines. The set contains:

- 1 x FT 01483 Square block chuck 80/PIN chuck with 2 x FT 01043 FTool ER chuck 80P
- 1 x FT 01811 FTool PIN MultiClamp 181 x 72 mm B40, corrosion-resistant
- 2 x FT 01949 FTool Pallet PP148 alu (Power Plate)
- 2 x FT 01835 FTool ER-PowerPlate (individual centering plate for pallets and fixtures)
- 4 x FT 01074 Chucking spigot F/M long without flushing

Article no.	Article	Quantity	Weight	Code
FT 02003	FTool 5S-PowerSet	1 Set	18.60 kg	P

ER Chuck 80P

Manual chuck, hardened, stainless steel.

For the system sizes ER 50 and 100. Hole patterns chuck: 8 x M6 TK Ø 61 x 45°

Grinded flanks for the power centering. Strong floating gripping mechanism.

Clamping force by hand with allen key: 8'000 N



Article no.	Article	Quantity	Weight	Code
FT 01043	FTool ER chuck 80P	1 piece	1.60 kg	A

Square block

Accurate ground square block, corrosion-resistant, for the assembling of one or two ER chuck 80P (FT 01043) or chuck 80 IF3R (FT 01044), in vertical or horizontal position. For the application with brackets on miscellaneous tooling machines. Spindle height at horizontal installation of the chuck: 75 mm



Article no.	Article	Quantity	Weight	Code
FT 01483	Square block chuck 80/PIN chuck	1 piece	8.20 kg	A

F-Tool ER-PowerPlate

Centering plate with P-profile, compatible with FT 01043 FTool ER chuck 80P plus all EROWA chucks with P-profile, EROWA PowerChuck and EROWA ProductionChuck 210 Combi. Highly friction centering. For the direct assembling on pallets and fixtures.



Article no.	Article	Quantity	Weight	Code
FT 01835	FTool ER-PowerPlate	1 piece	0.27 kg	P

F-Tool Pallet ER-PP148 alu (PowerPlate)

The F-Tool pallet is equipped with the F-Tool PowerPlate and can be used on all EROWA chucks with P centering. For the collet of fixtures and work pieces, the pallet with hole pattern 4 x Ø 9/110 x 50//4 x Ø 9/TK37A) and 4 x M8/D80 is prepared for the assembling of the F-Tool MultiClamp FT 01809 and FT 01811.



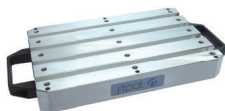
Article no.	Article	Quantity	Weight	Code
FT 01949	FTool Pallet ER-PP148 alu (Power Plate)	1 piece	1.41 kg	P

F-Tool T-nut ER-P-Pallet with handles

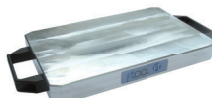
The F-Tool PP-pallet with handles can be used perfectly on EROWA chucks with P-profile. The T-nut pallet is suited for the collet of work pieces and fixtures. The pallets are equipped with the PowerPlate FT 01835.



FT 02004



FT 02005

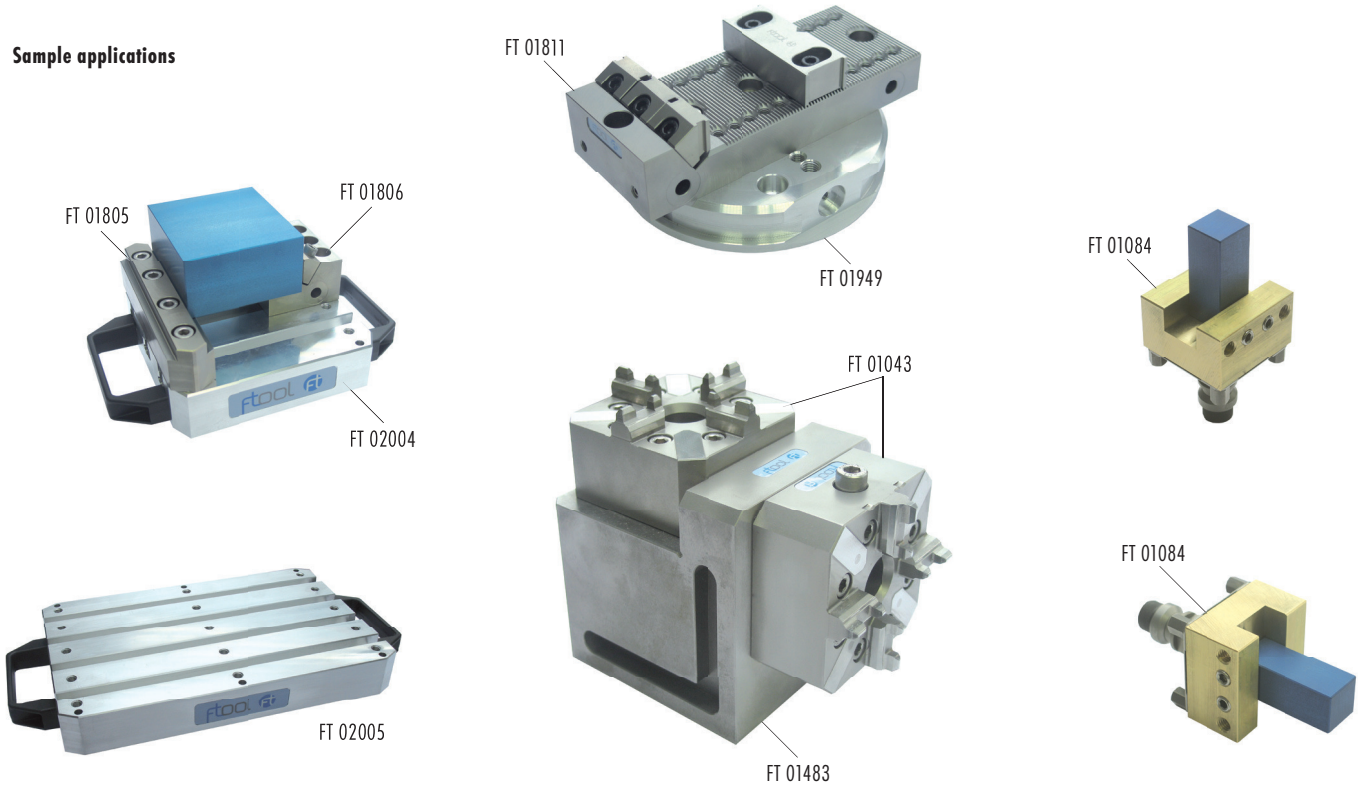


FT 02006

Article no.	Article	Quantity	Weight	Code
FT 02004	FTool T-slot PP-Palette 150 x 150 mm	1 piece	2.40 kg	P
FT 02005	FTool T-slot PP-Palette 280 x 180 mm	1 piece	4.30 kg	P
FT 02006	FTool Universal-PP-Palette 280 x 180 mm	1 piece	4.90 kg	P

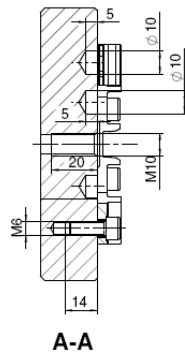
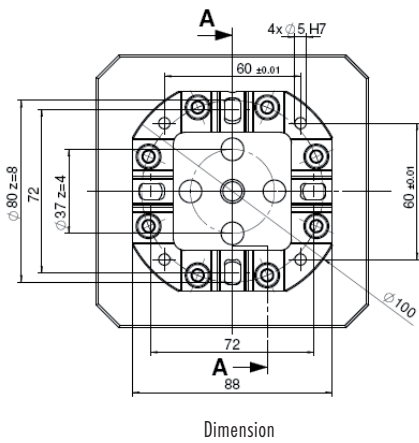
- Flexible machining of cubic pieces of miscellaneous sizes
- Accurate, strong and centrally clamping simplifies the machining
- Time saving and quality intensification profits the investment within less than a year

Sample applications

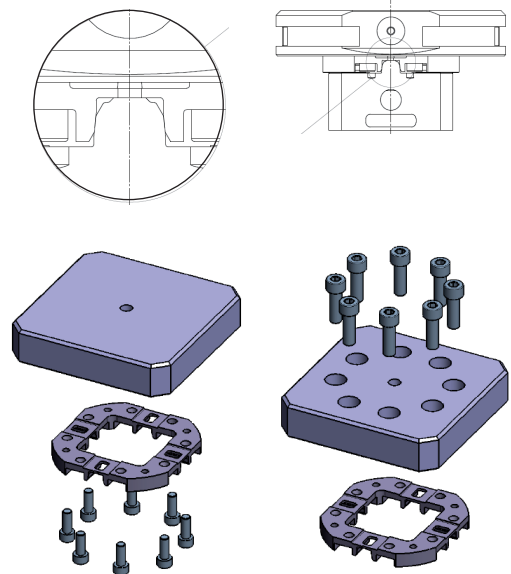


Centering with the F-Tool PowerPlate is suitable for high cutting efficiency

Assembling of the PowerPlate

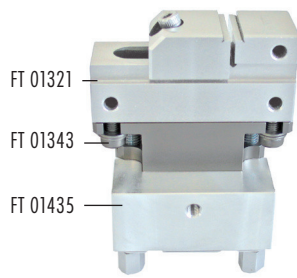


Pin with lateral power intake
Pin for the removal



Assembling from the bottom

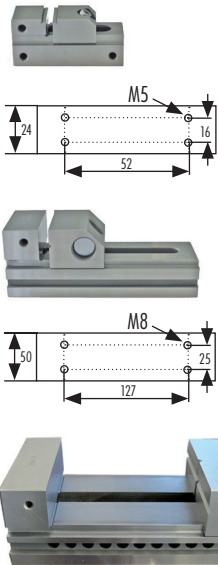
Assembling from above



Clamping elements and interface plates

Adapter for vise 20VL24.

Article no.	Article	Quantity	Weight	Code
FT 01321	FTool vise 20VL24	1 piece	0.26 kg	W
FT 01343	FTool Interface uniplate for vise 20VL24	1 piece	0.22 kg	W
FT 01435	FTool ER-plate EWIS	Set of 10 pieces	4.50 kg	A



F-Tool vises

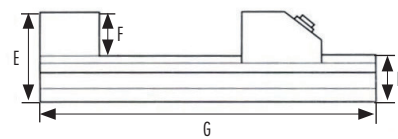
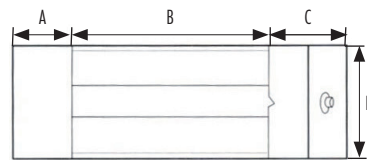
Accurate vises made of rustless, hardened, grinded high-grade steel for grinding machines, EDM-, wire EDM- and EDM drilling- machines.

Dimensions FT 01321 (mm): A=20 B=20 C=25 D=24 E=30 F=10 G=64.5 H=19.5

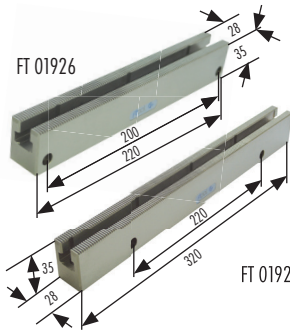
Dimensions FT 01320 (mm): A=25 B=75 C=40 D=50 E=52.5 F=25 G=140 H=28

Dimensions FT 01591 (mm): A=50 B=200 C=90 D=150 E=100 F=50 G=330 H=50

Article no.	Article	Quantity	Weight	Code
FT 01321	FTool vise 20VL24	1 piece	0.26 kg	W
FT 01320	FTool vise 80VL50	1 piece	1.40 kg	W
FT 01591	FTool precision vise 200VL150 rustless steel	1 piece	22.00 kg	B



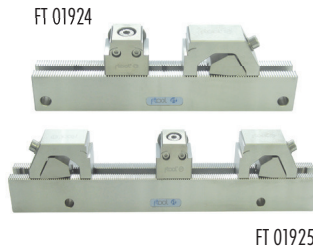
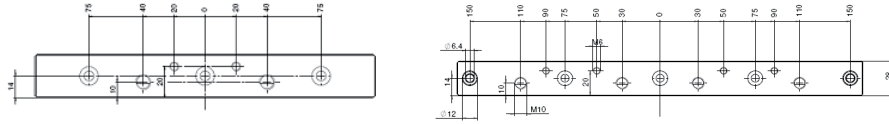
F-Tool MC railer B28



F-Tool railers B28

The F-Tool railer is hardened and made of rustless steel. The grinded cog-grid is 2 mm.

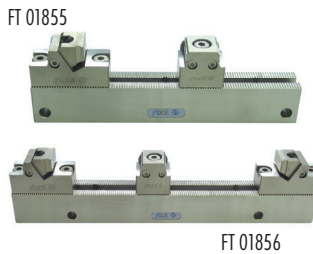
Article no.	Article	Quantity	Weight	Code
FT 01926	FTool clamping beam 220 B28	1 piece	1.25 kg	P
FT 01927	F-Tool clamping beam 320 B28	1 piece	1.80 kg	P



WEDM railers with high-accuracy clamping jaws

The WEDM railer is prepared with a disc pull-down-system and a quickly adjustable clamping-slide. With the help of the basic rulers IF FT 01873 or with the two fixing holes $\varnothing 9$ D200, the railer can be clamped horizontal in the EDM wire cutting machine. Maximal holding capacity B220 B28 = 130 mm, B320 B28 = 2 x 0-88 mm or 1 x 0-230 mm

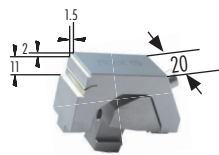
Article no.	Article	Quantity	Weight	Code
FT 01924	WEDM clamping beam 220B28 with sliding jaws B28WEDM	1 piece	1.80 kg	P
FT 01925	WEDM clamping beam 320B28 with sliding jaws B28WEDM	1 piece	2.70 kg	P



F-Tool railers B28

The railer set is suitable for the multiple clamping of precision pieces. The railer can be assembled on pallets. The railer and the clamping elements are made of rustless steel.

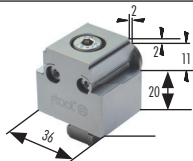
Article no.	Article	Quantity	Weight	Code
FT 01855	FTool Railer Set 220 B28 with clamping jaw B28/20 L62	1 piece	1.83 kg	P
FT 01856	FTool Railer Set 320 B28 with clamping jaw B28/20 L62	1 piece	2.75 kg	P



Pull-down high accuracy clamping jaw B28WEDM

The quickly adjustable clamping jaw is suitable for the EDM wire cutting or in the high-precision mechanics. The disc pull-down-system is suitable excellent for the clamping of grinded pieces. Additional with micro-pitch.

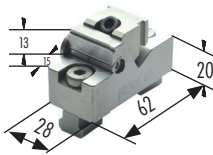
Article no.	Article	Quantity	Weight	Code
FT 01928	High accuracy sliding jaw B28WEDM	1 piece	0.41 kg	P



Pull-down high accuracy double stopper B28WEDM

The double stopper is equipped with the disc-pull-down-system and a micro-pitch.

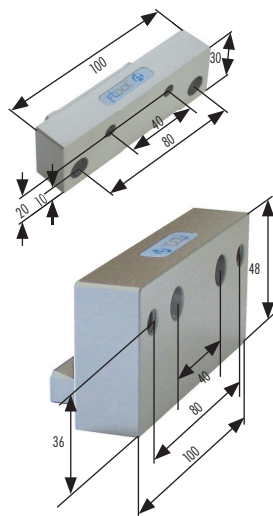
Article no.	Article	Quantity	Weight	Code
FT 01929	High accuracy double stopper B28WEDM	1 piece	0.30 kg	P



Clamping jaw B28 with pull-down-stopper

With the spring borne pull-down clamping jaw you can clamp strongly in no time at all. The clamping range is 3 mm.

Article no.	Article	Quantity	Weight	Code
FT 01934	Clamping jaw B28 with pull down stopper	1 piece	0.40 kg	P

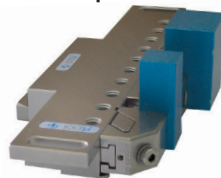


F-Tool basic ruler IF100

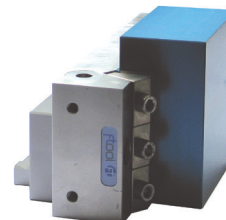
The basic ruler IF100 adapter is suited for the collet of the several beams, the front spanner 140 (FT 01572) or other installations directly into the ruler set (FT 01344).

Article no.	Article	Quantity	Weight	Code
FT 01873	Basic Ruler IF100/30	1 piece	0.55 kg	W
FT 01878	Basic Ruler IF100/50	1 piece	0.84 kg	W

Combination examples:

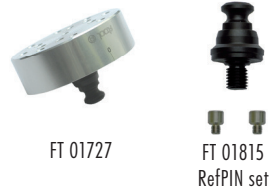
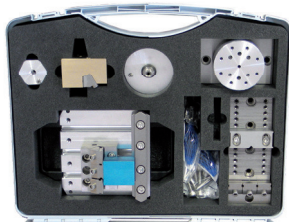


FT 01873 with beam 220 mm with clamping lips (FT 01327) and beamwise twin (FT 01057)



FT 01878 with PIN MultiClamp 181 (FT 01811)

To make the access into the division of the PIN ZeroPoint centering system, we prepared two economic PIN Tool basic equipments for your individual application.



FT 01727

FT 01815
RefPIN set



FT 01716



FT 01483

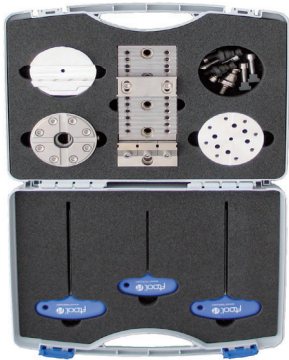
F-Tool PIN Tool Set

The PIN Tool Set is especially qualified for demo- and education uses, as well as basic initial equipment.

The set FT 01861 contains:

- 1 x FT 01336 Adapter plate 120 x 82 mm chuck 80/PIN chuck
- 1 x FT 01716 FTool PIN center chuck
- 1 x FT 01719 FTool RefPIN HP-Z with flushing (ground)
- 1 x FT 01725 FTool PIN clamping holder 26 mm
- 1 x FT 01726 FTool PIN electrode spanner Ø 16 mm
- 1 x FT 01727 FTool PIN pallet aluminium Ø 80 mm
- 1 x FT 01803 PIN T-slot pallet 150 x 150 x 37.5 mm
- 1 x FT 01805 Stopper beam B150 H25 mm
- 1 x FT 01806 PIN clamping block 58 x 72 mm complete
- 1 x FT 01807 FTool PIN BrassClamp 72 x 72 mm B40
- 1 x FT 01811 FTool PIN MultiClamp 181 x 72 mm B40
- 1 x FT 01812 FTool PIN fixed stop complete
- 3 x FT 01815 FTool RefPIN set
- 2 x FT 01818 FTool PIN T-slot screw (set of 2 pieces)
- 1 x FT 01865 Flat-grip reversible jaw FG-72-h12
- 1 x FT 01867 Flat-grip-clamping jaw set FCG24-h12 (set of 3 pieces)
- 1 x FT 01868 FTool PIN parallel support set 10 mm (set of 2 pieces)
- Miscellaneous screws and allen keys

Article no.	Article	Quantity	Weight	Code
FT 01861	FTool PIN Tool Set	1 set	14.00 kg	C
Options:				
FT 01716	FTool PIN center chuck	1 piece	1.48 kg	P
FT 01727	FTool PIN pallet aluminium Ø 80 mm	1 piece	0.34 kg	P
FT 01815	FTool RefPIN set	1 set	0.07 kg	P
FT 01483	Square block chuck 80/PIN chuck	1 piece	8.20 kg	A



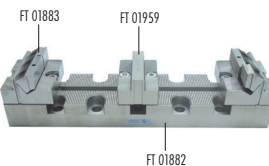
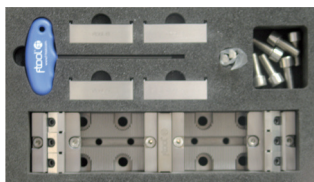
F-Tool PIN MultiClamp Set

The PIN MultiClamp Set is especially qualified for demo- and education uses, as well as basic initial equipment.

The set FT 01881 contains:

- 1 x FT 01716 PIN center chuck
- 1 x FT 01719 RefPIN HP-Z with flushing (ground)
- 2 x FT 01721 RefPIN-Z without flushing
- 1 x FT 01725 PIN clamping holder 26 mm
- 1 x FT 01727 PIN pallet alu Ø 80 mm
- 2 x FT 01745 PIN index Ø 8/7 mm M5
- 1 x FT 01811 PIN MultiClamp 181 x 72 mm B40
- Miscellaneous vises and allen keys

Article no.	Article	Quantity	Weight	Code
FT 01881	FTool PIN MultiClamp Set	1 set	5.51 kg	C



FT 01883

FT 01959

FT 01882

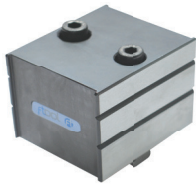
F-Tool MC Railer Set 320 B72

The MC Railer Set 320 B72 is especially qualified for demo- and education uses, as well as basic initial equipment.

The set FT 01857 contains:

- 1 x FT 01882 FTool MC railer 320 B72
- 1 x FT 01959 FTool MC stopper beam B72/20 L48/16
- 2 x FT 01883 FTool MC clamping block B20 / 58
- 4 x FT 01887 FTool extension jaw 22h13
- 2 x FT 01868 FTool PIN parallel support set 10 mm (Total 4 pieces)
- Miscellaneous vises and allen keys

Article no.	Article	Quantity	Weight	Code
FT 01857	FTool MC Railer Set 320 B72 complete	1 set	8.87 kg	P
FT 01882	FTool MC railer 320 B72	1 piece	5.20 kg	P
FT 01883	FTool MC clamping block B20 / 58	1 piece	0.88 kg	P
FT 01959	FTool MC stopper beam B72/20 L48/16	1 piece	0.70 kg	P



F-Tool MC stopper beam

The F-Tool MC stopper beam B72 h60 fits on the MC railer 320 B72 and 400 B72.

Article no.	Article	Quantity	Weight	Code
FT 02035	FTool stopper beam B72 x 56 x h60 mm	1 Stück		P



FTool Clamping Block B72 h60

The F-Tool clamping block B72 h60 fits on the MC railer 320 B72 and 400 B72.

Article no.	Article	Quantity	Weight	Code
FT 02036	FTool clamping block B72 h60 with large clamping jaw	1 piece	1.77	P



F-Tool support set B72 h25

The F-Tool support set B72 h25 fits on the MC stopper beam FT 02035 and the clamping block FT 02036.

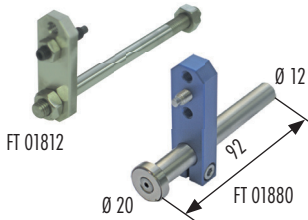
Article no.	Article	Quantity	Weight	Code
FT 02038	FTool support set B72 h25	Set of 2 pieces		P



F-Tool clamping jaw 72 mm

It is possible to use the F-Tool clamping jaw 72 mm in place of the 3 pull-down clamping elements.

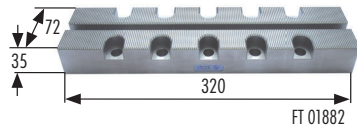
Article no.	Article	Quantity	Weight	Code
FT 01814	FTool clamping jaw 72 mm, corrosion-resistant	1 piece	0.20 kg	P



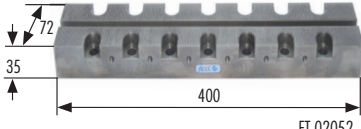
F-Tool fixed stop

A stop element for the F-Tool MultiClamps and the F-Tool clamping block.

Article no.	Article	Quantity	Weight	Code
FT 01812	FTool fixed stop complete	1 piece	0.15 kg	P
FT 01880	Adjustable magnetic base-stop	1 piece	0.20 kg	P



FT 01882



FT 02052



F-Tool MC railer 320 B72

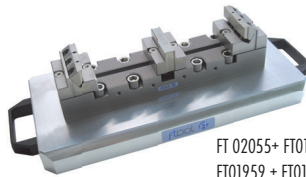
The multiclamp railer 320 B72 is made of rust-resistant material, hardened and precision ground.
Dimension: 320 x 72 x 35 mm, tooth grid 2 mm, hole grid Ø 12 x 50 mm.
The railer fits on the pallet with hole grid 50 mm.

Article no.	Article	Quantity	Weight	Code
FT 01882	FTool MC railer 320 B72	1 piece	5.40 kg	P
FT 02052	FTool MC railer 400 B72	1 piece	6.90 Kg	P

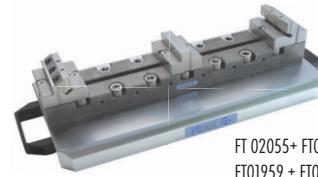
Universal alu pallet MTS 200/250

The alu pallet MTS 200/250 is for the collet of the railer FT 01882 and FT 02055. The pallet is processed with hole grid for the MTS chucking spigot set 2 ER 041460 with distance 200/250. Delivered without chucking spigots.

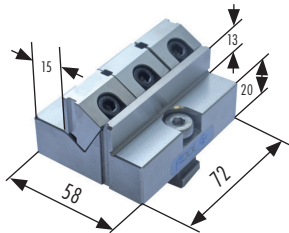
Article no.	Article	Quantity	Weight	Code
FT 02055	Universal alu pallet 400 x 200 x 35 mm with handles	1 piece	7.99 Kg	P



FT 02055 + FT 01882 +
FT 01959 + FT 01883



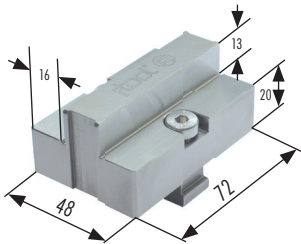
FT 02055 + FT 02052 +
FT 01959 + FT 01883



F-Tool MC clamping block B72/20 L58

The clamping block with fixed stop fits the railer 320 B72 and 400 B72. Made of rust resistant material, hardened and ground. With the three clamping jaws a tension can be caused of 3.5 t. The clamping principle of the clamping jaws produces an optimal pull-down effect.

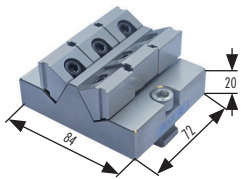
Article no.	Article	Quantity	Weight	Code
FT 01883	FTool MC clamping block B72/20 L58	1 piece	0.88 kg	P



F-Tool MC stopper beam B72/20 L48/16

The MC stopper beam B72 fits the railer 320 B72 and 400 B72. The MC stopper beam is made of rust resistant material, hardened and precision ground.

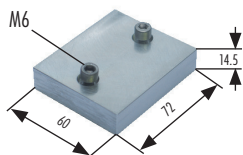
Article no.	Article	Quantity	Weight	Code
FT 01959	FTool MC stopper beam B72/20 L48/16	1 piece	0.70 kg	P



F-Tool double clamping block

The F-Tool double clamping block is suitable for the multiple clamping on the MC railer B72.

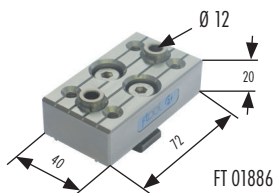
Article no.	Article	Quantity	Weight	Code
FT 01884	FTool MC double clamping block B72/20 L84	1 piece	1.35 kg	P



F-Tool MC stopper beam base B20 / 40

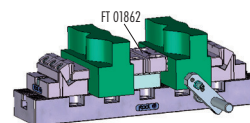
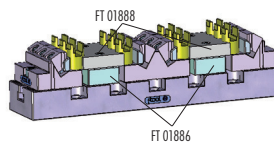
On these MC stopper beam bases, aluminium jaws or the F-Tool prism reversible jaws can be assembled.

Article no.	Article	Quantity	Weight	Code
FT 01886	FTool MC stopper beam base B20 / 40	1 piece	0.48 kg	P
FT 01888	FTool alu jaw 72 x 60 x 14.5 mm	1 piece	0.24 kg	P

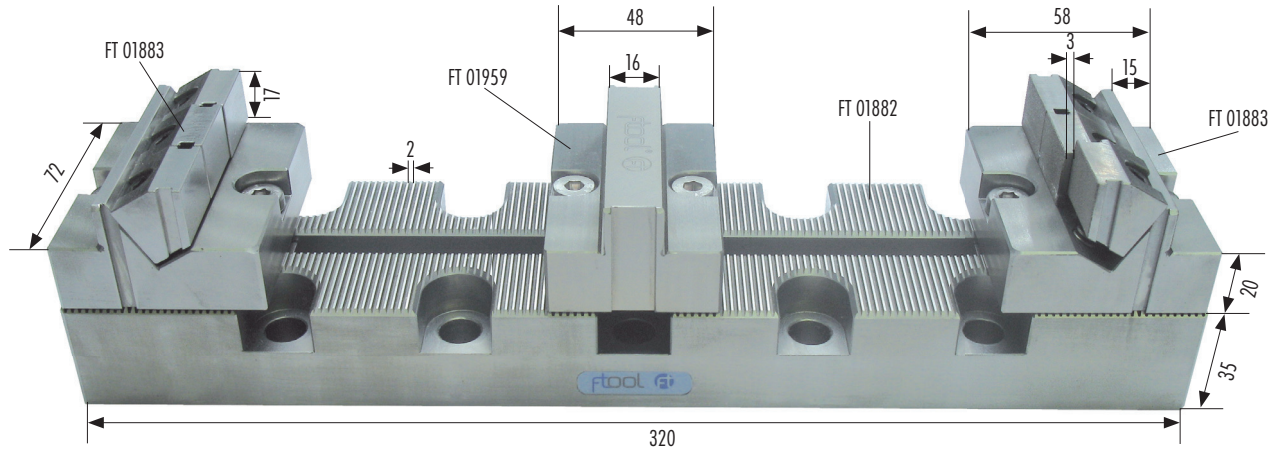


FT 01886

Combination examples:



- For milling, grinding, EDM sinking and EDM wire-cutting
- Great flexibility with few clamping elements
- Accurate production, rust-resistant



F-Tool MC railer view assembling side

- The MC railer can be assembled directly on UPC 320 pallets or other breadboards with 50 mm hole centre distance.
- Likewise applicable to EDM wire-cutting thanks to rustless construction and vertical clamping with two MultiClamp IF FT 01878.
- Equipped with TwinSet, connected firmly and precise in the PIN ZeroPoint centering system MB 160.

