

See for yourself. To meet your practical circumstances you are only one «click» away from us.

Visit our homepage at

[www.f-tool.com](http://www.f-tool.com)

**Head office:**

**F-Tool International AG** • Oberdorf 6 • P.O. Box • CH-5040 Schöftland • Switzerland •  
Phone +41 (0)62 739 00 30 • Fax +41 (0)62 739 00 39 • E-Mail: [info@f-tool.com](mailto:info@f-tool.com)

**Subsidiary in Germany:**

**F-Tool GmbH** • Gewerbepark Breisgau • Freiburger Strasse 19 • DE-79427 Eschbach •  
Phone +49 (0)7634 5048 83-0 • Fax +49 (0)7634 5048 83-15 • E-Mail: [info@ftool.de](mailto:info@ftool.de)

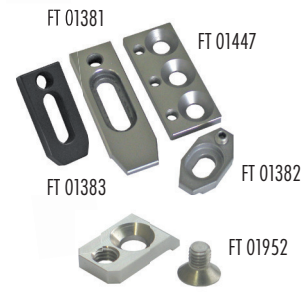
**Subsidiary in Thailand:**

**F-Tool (Thailand) Co., Ltd.** • 12/3 Moo 10 • Klong-Khoi, Pak-Kred • TH-11120 Nonthaburi •  
Phone +66 (0)84 757 66 62-3 • Fax +66 2571 3791 • E-Mail: [ftoolth@ksc.th.com](mailto:ftoolth@ksc.th.com)

Member of the EROWA Group

Technical modifications reserved.

For a number of products of F-Tool International AG, patents have been granted or are pending.



**F-Tool brackets**

Brackets corrosion-resistant for the miscellaneous clamping elements.

Article no.	Article	Quantity	Weight	Code
FT 01381	Ftool bracket 70E103 corrosion-resistant	1 piece	0.07 kg	W
FT 01382	Ftool bracket ER34 corrosion-resistant	1 piece	0.02 kg	W
FT 01383	Ftool bracket ER45 corrosion-resistant	1 piece	0.08 kg	B
FT 01447	Ftool multi bracket 60 x 26 x H6 mm corrosion-resistant	1 piece	0.06 kg	W
FT 01952	Mini Bracket 22 x 13 x 3.8 mm	1 piece	0.05 kg	W



**F-Tool jacks**

The jacks can be used as bracket supports or as screw extensions on the universal pallet and the miscellaneous frame pallets. The soft brass material prevents the making on the work piece by the brackets and the screws.

Article no.	Article	Quantity	Weight	Code
FT 01322	Ftool jack brass Ø 20 x 10 mm for M8	1 piece	0.02 kg	W
FT 01323	Ftool jack extension brass Ø 20 x 20 mm	1 piece	0.05 kg	W
FT 01456	Ftool jackset adjustable Ø 20 x 20-26 mm	1 piece	0.05 kg	W
FT 01492	Ftool jack brass Ø 9.5 x 10 mm for M6	1 piece	0.01 kg	W
FT 01493	Ftool jack extension brass Ø 9.5 x 20 mm	1 piece	0.01 kg	W



**F-Tool allen keys**

Allen keys with hand grip.

Article no.	Article	Quantity	Weight	Code
FT 01403	Ftool allen key with hand grip 4 mm L = 100 mm	1 piece	0.01 kg	B
FT 01404	Ftool allen key with hand grip 5 mm L = 150 mm	1 piece	0.02 kg	B
FT 01405	Ftool allen key with hand grip 6 mm L = 150 mm	1 piece	0.03 kg	B

Tooling care products



**TCE-Fluid 435 F-Tool corrosion protection**

For care and conservation of the system parts. Dries immediately after application. It's qualified excellent for the protection of casting forms.

Article no.	Article	Quantity	Weight	Code
FT 01676	TCE-Fluid 435 Ftool corrosion protection 500 ml	1 piece	0.50 kg	B



**TCE-Fluid 010 F-Tool universal cleaner**

Highly efficient spray cleaner. Cleans strong disposals on system parts and working pieces. Deep-pore cleaning.

Article no.	Article	Quantity	Weight	Code
FT 01677	TCE-Fluid 010 Ftool universal cleaner 500 ml	1 piece	0.50 kg	B

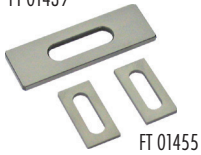


**F-Tool protection grease Caltima**

For enduring grease of the guides, links, screws and threads in the water bath.

Article no.	Article	Quantity	Weight	Code
FT 01678	Ftool protection grease Caltima	1 piece	0.45 kg	B

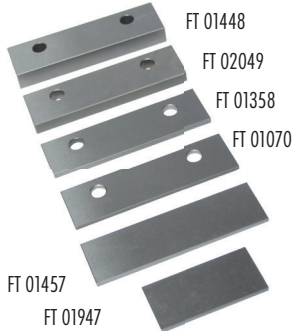
FT 01439



**F-Tool beam spacer plates**

The spacer plate 60/3 mm can be used for the lifting of 3 mm of the clamping beams, the front spanners or the side spanners. The spacer plate 28/2 mm is intended for the lifting of the clamping beam 75 mm (FT 01414) of the frame pallet 10 mm. To protect against collision of the clamping lips and flushing nozzles on machines with closed, no flexible flushing nozzles.

Article no.	Article	Quantity	Weight	Code
FT 01439	FTool spacer plate 60 x 20 x 3 mm for beam	Set of 2 pieces	0.04 kg	W
FT 01455	FTool spacer plate 28 x 14 x 2 mm for beam 75 mm	Set of 2 pieces	0.01 kg	W



**F-Tool spacer plates**

For the assembling of miscellaneous clamping elements in the swivel table IF 22 (FT 01355) or in the palletset W adapter to basis zero. Basis height: 22 mm - height clamping element = height spacer plate

The spacer plate H 3 mm (FT 01070) can be used as well for the lifting of the F-Tool clamping elements with clamping lips. To protect against collision of the clamping lips and flushing nozzles on machines with closed, no flexible flushing nozzles.

Article no.	Article	Quantity	Weight	Code
FT 01070	FTool spacer plate 100 x 29 x H 3 mm	1 piece	0.09 kg	W
FT 01358	FTool spacer plate 100 x 29 x H 4 mm	1 piece	0.11 kg	W
FT 01448	FTool spacer plate 100 x 29 x H 12 mm	1 piece	0.31 kg	W
FT 01457	FTool spacer plate 100 x 29 x H 3 mm	1 piece	0.09 kg	W
FT 01947	FTool spacer plate 60 x 29 x H 3 mm	1 piece	0.04 kg	W
FT 02049	FTool spacer plate 100 x 29 x H 8 mm	1 piece	0.17 kg	W



**F-Tool clamping beam for frame pallet**

Small, accurate, corrosion-resistant clamping beams for the frame pallet 10 mm. Provided with 2 mm lips on both sides. On one side, equipped with a compact strip for work pieces of < 10 mm height. On the other side with exemption for the clamping of high work pieces. Delivered completely with screws.

Article no.	Article	Quantity	Weight	Code
FT 01414	FTool clamping beam 75 mm two-sided for frame pallet 10 mm	1 piece	0.23 kg	W

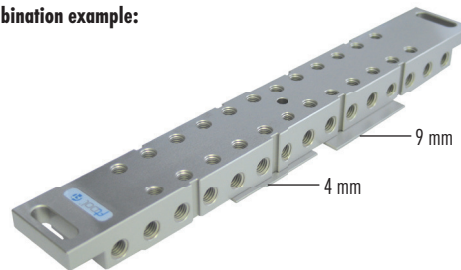


**F-Tool Z-plate**

The Z-0 base plate, made of corrosion-resistant, grinded steel, can be assembled on beams without clamping lips. Depending on the direction, respective the clamping function, the lip overlap 4 mm or 9 mm from the support.

Article no.	Article	Quantity	Weight	Code
FT 01906	Z-0 base plate 4/9 mm 69 x 31 x 3.4 mm	1 piece	0.10 kg	W

**Combination example:**



**F-Tool Z-plate**

The Z-0 base plate, made of corrosion-resistant, grinded steel, can be assembled on beams without clamping lips or other clamping devices.

Article no.	Article	Quantity	Weight	Code
FT 01911	Z-disc 3 mm incl. countersunk screw M8 x 14 mm	1 Set	0.05 kg	B



**F-Tool pressure screw**

Pressure screw, corrosion-resistant with pressure surface and applicable pressure angle for the basic ruler.

Article no.	Article	Quantity	Weight	Code
FT 01373	FTool pressure screw M8 x 18 mm	1 piece	0.01 kg	W



**F-Tool stopper**

Stopper hardened, corrosion-resistant, complete with special screw M6 x 16 mm. To fix on the basic ruler's.

Article no.	Article	Quantity	Weight	Code
FT 01376	FTool stopper hardened with screw M6 corrosion-resistant	1 piece	0.01 kg	W

## Pendulum head for EROWA UnoSet interface



### F-Tool ER swivel 55F18

ER pendulum head with vise 55F18. Adjustable in all three axes. Appropriate for the use on WEDM machines in the quickchuck 50 (arbor height 28 mm) or in the ER chuck 80P (arbor height 40 mm).

Article no.	Article	Quantity	Weight	Code
FT 01365	FTool ER swivel with FT vise 55F18	1 piece	2.30 kg	W

→ Delivered with chucking spigot (FT 01060), miscellaneous screw material and allen keys

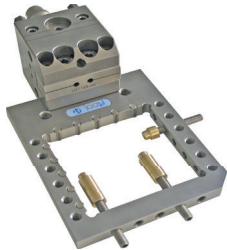


### F-Tool ER swivel 20VL24

ER pendulum head with vise 20VL24. Adjustable in all three axes. Appropriate for the use on WEDM machines in the quickchuck 50 (arbor height 28 mm) or in the ER chuck 80P (arbor height 40 mm).

Article no.	Article	Quantity	Weight	Code
FT 01364	FTool ER swivel with FT vise 20VL24	1 piece	2.00 kg	W

→ Delivered with chucking spigot (FT 01060), miscellaneous screw material and allen keys

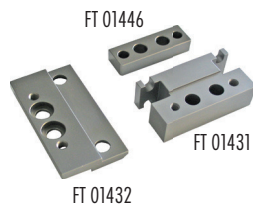


### F-Tool ER swivel with frame pallet

ER pendulum head with frame pallet 75 mm. Adjustable in all three axes. Appropriate for the use on WEDM machines in the quickchuck 50 (arbor height 28 mm) or in the ER chuck 80P (arbor height 40 mm).

Article no.	Article	Quantity	Weight	Code
FT 01445	FTool ER swivel with frame pallet 75 x 75 x 10 mm	1 piece	2.00 kg	W

→ Delivered with chucking spigot (FT 01060), miscellaneous screw material and brass jacks



### F-Tool ER swivel interfaces

The ER swivel interfaces are used to bring the appropriate clamping elements to the zero-height on the machine table. Therewith, the backside of the ER pendulum head can be combined with several clamping elements.

Article no.	Article	Quantity	Weight	Code
FT 01432	FTool ER swivel IF for vise 55F18	1 piece	0.26 kg	W
FT 01431	FTool ER swivel IF for vise 20VL24	1 piece	0.38 kg	W
FT 01446	FTool ER swivel IF 55 x 18 x 12 mm for frame pallet 75 x 75 x 10 mm	1 piece	0.12 kg	W



### F-Tool ER adapter

This adapter plate is overwinded parallel in the system and provides an insertion of electrodes, work pieces and appliances. Corrosion-resistant.

Hole distance with 2 x M6 screws: 40 mm

Article no.	Article	Quantity	Weight	Code
FT 01435	FTool ER-plate EWIS	Set of 10 pieces	4.50 kg	A



### F-Tool chucking spigot

Corrosion-resistant chucking spigots for the use in ER chucks on wire EDM machines.

Article no.	Article	Quantity	Weight	Code
FT 01060	FTool ER chucking spigot F/A WEDM	Set of 10 pieces	0.80 kg	B

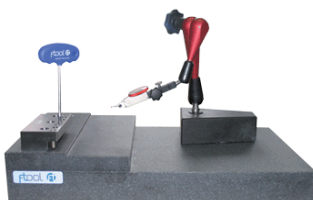
## F-Tool PreSet WT

### F-Tool PreSet WT

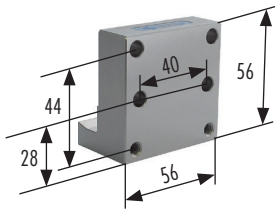
Precision grinded granit table 500 x 315 x 90/60 mm, Quality 0, with grinded stopper h25 mm and 6 inlaid thread socket M8, Distance 50 mm.

To control, align and preset of work pieces, installed in miscellaneous F-Tool clamping elements.

- |                                      |  |
|--------------------------------------|--|
| 1 x FT 02119 granite table           | 1 x FT 01901 mesuring clock 0.002                |
| 1 x FT 01347 basic ruler 140mm       | 1 x FT 01403 FTool allen key with hand grip 4 mm |
| 1 x FT 01900 tripod FISSO STRATO M28 | miscellaneous screws and keys                    |



Article no.	Article	Quantity	Weight	Code
FT 02122	FTool PreSet WT 500 x 315 90/60	1 piece	47.00 kg	B

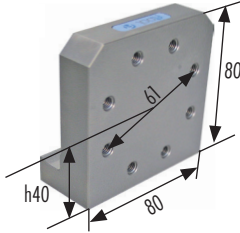


**F-Tool WEDM angle QC50**

For the collet of the quickchuck 50, the interface plate 146 x 56 x 12 mm or other appliances. The WEDM angle can be clamped directly in the F-Tool basic ruler. Delivered with miscellaneous screw material.

Arbor height from basis zero level (mid angle): 28 mm

Article no.	Article	Quantity	Weight	Code
FT 01337	FTool WEDM IF angle QC50	1 piece	0.61 kg	W



**F-Tool WEDM angle IF 80**

For the clamping of the ER/chuck 80 IF3R and other appliances. The WEDM angle can be clamped directly in the F-Tool basic ruler.

Arbor height from basis zero level (mid angle): 40 mm

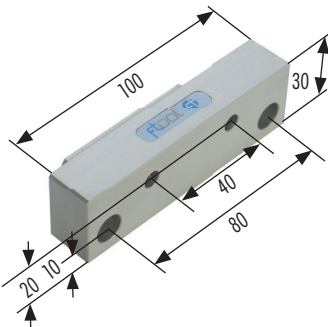
Article no.	Article	Quantity	Weight	Code
FT 01338	FTool WEDM IF angle ITS/chuck 80 IF3R	1 piece	1.08 kg	W



**F-Tool adapter plates palletset W**

Adapter plates for the clamping of the magnetic table (FT 01326) and the vise 80VL50 (FT 01320) in the palletSet W-holder. For this application you need both plates.

Article no.	Article	Quantity	Weight	Code
FT 01842	FTool adapter plate palletset W	1 piece	0.98 kg	W
FT 01843	FTool IF plate PW90°	1 piece	0.70 kg	W

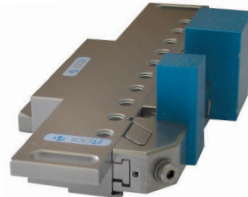


**F-Tool basic ruler IF100/30**

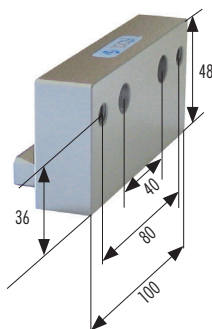
The basic ruler IF100/30 adapter is suited for the collet of the several beams, the front spanner 140 (FT 01572) or other installations directly into the ruler set (FT 01344).

Article no.	Article	Quantity	Weight	Code
FT 01873	Basic Ruler IF100/30	1 piece	0.55 kg	W

**Combination example:**



FT 01873 with beam 220 mm with clamping lips (FT 01327) and beamwise twin (FT 01057)

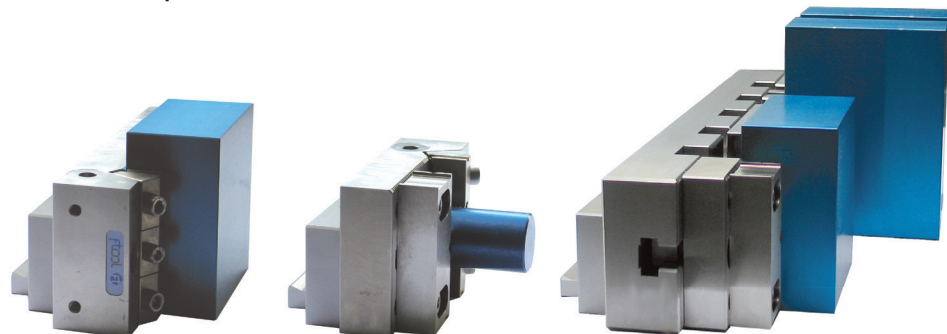


**F-Tool basic ruler IF100/50**

The basic ruler IF100/50 is suited for the clamping of the PIN MultiClamps 105 (FT 01809 + 01810), PIN MultiClamp 181 (FT 01811), MC railer 320 (FT 01882) or other installations directly into the ruler set (FT 01344).

Article no.	Article	Quantity	Weight	Code
FT 01878	Basic Ruler IF100/50	1 piece	0.84 kg	W

**Combination examples:**



FT 01878 with PIN MultiClamp 181 (FT 01811)

FT 01878 with PIN MultiClamp 105 (FT 01809)

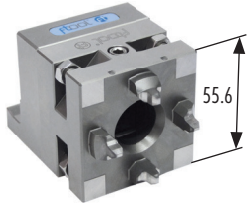
FT 01878 with MC railer 320 mm (FT 01882) and 2 x PIN MultiClamp 105 (FT 01809)

**F-Tool ER-Chuck 50**

ITS chuck system size 50, manual, corrosion-resistant. Fixing with 4 x M8, hole pattern 44 mm, from back side or with 4 x M6 with stud bolts and screw nut. Use on EDM / WEDM machines and for milling and grinding jobs.

Maximum rotation speed on rotating axes 200 U/min. Clamping force 4000 N

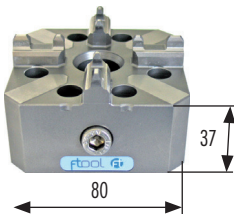
Article no.	Article	Quantity	Weight	Code
FT 02110	FTool ER-Chuck 50	1 piece	0.72 kg	B

**F-Tool ER-Chuck 50 assembled on WEDM angle**

ER-Chuck 50 (FT 02110) assembled on WEDM angle (FT 01337) for the fast clamping with the F-Tool basic ruler.

Arbor height: 28 mm

Article no.	Article	Quantity	Weight	Code
FT 01333	FTool ER-Chuck 50 with WEDM IF angle QC50	1 piece	1.30 kg	B

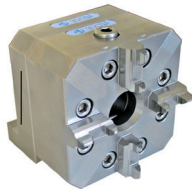
**F-Tool ER chuck 80P**

New, manual chuck. Corrosion-resistant. For the system sizes ER 50 and 100. Grinded flanks for the power centration. Strong, floating gripping mechanism.

Clamping force by hand with allen key: 5'000 - 8'000 N

Article no.	Article	Quantity	Weight	Code
FT 01043	FTool ER chuck 80P	1 piece	1.60 kg	A

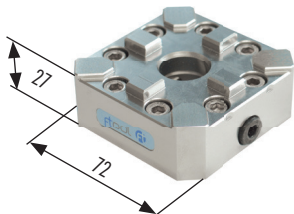
→ Delivered with miscellaneous screw material and allen key

**F-Tool ER chuck 80P assembled on WEDM angle**

ER chuck 80P (FT 01043) assembled on WEDM angle (FT 01338). For the fast clamping with the F-Tool stop beads (basic ruler).

Arbor height: 40 mm

Article no.	Article	Quantity	Weight	Code
FT 01334	FTool ER chuck 80P with WEDM IF angle 80	1 piece	2.80 kg	W

**F-Tool chuck 80 IF3R**

Manual made by F-Tool for 3R collet. Stainless. Strong, floating gripping mechanism.

Clamping force by hand with allen key: 5'000 - 8'000 N

Article no.	Article	Quantity	Weight	Code
FT 01044	FTool chuck 80 IF3R	1 piece	0.93 kg	A

→ Delivered with miscellaneous screw material and allen key

**F-Tool chuck 80 IF3R assembled on WEDM angle**

Chuck 80 IF3R (FT 01044) assembled on WEDM angle (FT 01338). For the fast clamping on the F-Tool stop beads (basic ruler).

Arbor height: 40 mm

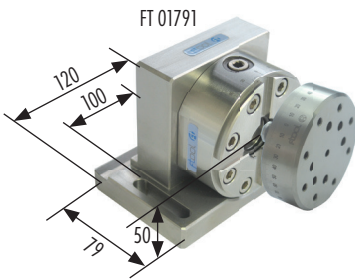
Article no.	Article	Quantity	Weight	Code
FT 01335	FTool chuck 80 IF3R with WEDM IF angle 80	1 piece	2.10 kg	W

→ Delivered with miscellaneous screw material and allen key

**F-Tool table set on 3R basis**

Those table sets are for the upgrade of oder machines with 3R dove tails.

Article no.	Article	Quantity	Weight	Code
FT 01907	WEDM table set on 3R base 350 x 105 x 30 mm (RFI200)	1 piece	5.85 kg	W
FT 01908	WEDM table set on 3R base 250 x 105 x 30 mm (RFI100)	1 piece		W

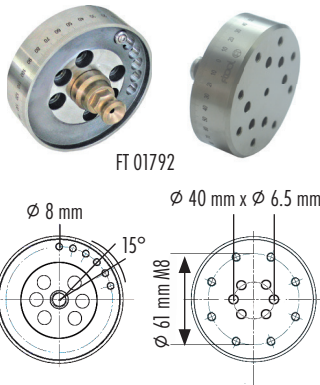


**F-Tool WEDM square block-index-table**

The F-Tool center chuck with spring-steel centering, 90° raster-indexation or stageless indexation with graduation. Able for the direct application on the drilling machine, on the WEDM-machine table with hole pattern 50 mm or to clamp with the F-Tool basic rulers (arbour height 50 mm). Delivered with a universal index adapter plate 80 with graduation (FT 01792) to adapt the ER chuck 80P (FT 01043), chuck 80 IF3R (FT 01044), collet chuck holder (FT 01580/FT 01581), electrodes or working pieces.

Dimension: 120 x 79 x 92 mm / Spindle height 50 mm

Article no.	Article	Quantity	Weight	Code
FT 01791	FTool WEDM square block-index-table 80, corrosion-resistant	1 piece	2.50 kg	W



**F-Tool universal index adapter plate**

Universal adapter plate 80 with nonius-display to adapt the ER chuck 80P (FT 01043), chuck 80 IF3R (FT 01044), collet chuck holder (FT 01580/FT 01581), electrodes or working pieces.

Hole pattern: 8 x M8 reference circle 61 for ER chuck 80P & chuck 80 IF3R

For 6 x M6 circle diameter 40 mm (to adapt collet chuck holder, front spanner FT 01572 or electrodes respective working pieces)

Article no.	Article	Quantity	Weight	Code
FT 01792	FTool universal index adapter plate 80 with graduation, corrosion-resistant	1 piece	0.90 kg	W
FT 01430	FTool PIN index Ø 8/7 mm M5, corrosion-resistant	1 piece	0.01 kg	P
FT 01745	FTool PIN index Ø 8/7 mm M5, corrosion-resistant, hardened & ground	1 piece	0.01 kg	P

→ Delivered with RefPIN HP Z (FT 01719) and PIN index (FT 01430)

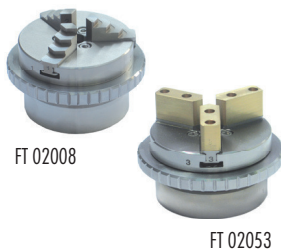


**F-Tool collet chuck holder**

Collet chuck holder with clamping nut for collet chucks ETS 32.

The collet chuck holder is corrosion-resistant and under careful care he could be also inserted in the water.

Article no.	Article	Quantity	Weight	Code
FT 01793	Collet chuck holder ETS32 incl. index adapter plate 80	1 piece	1.40 kg	W
FT 01581	FTool collet chuck holder ETS32 without adapter plate (corrosion-resist.)	1 piece	0.45 kg	A

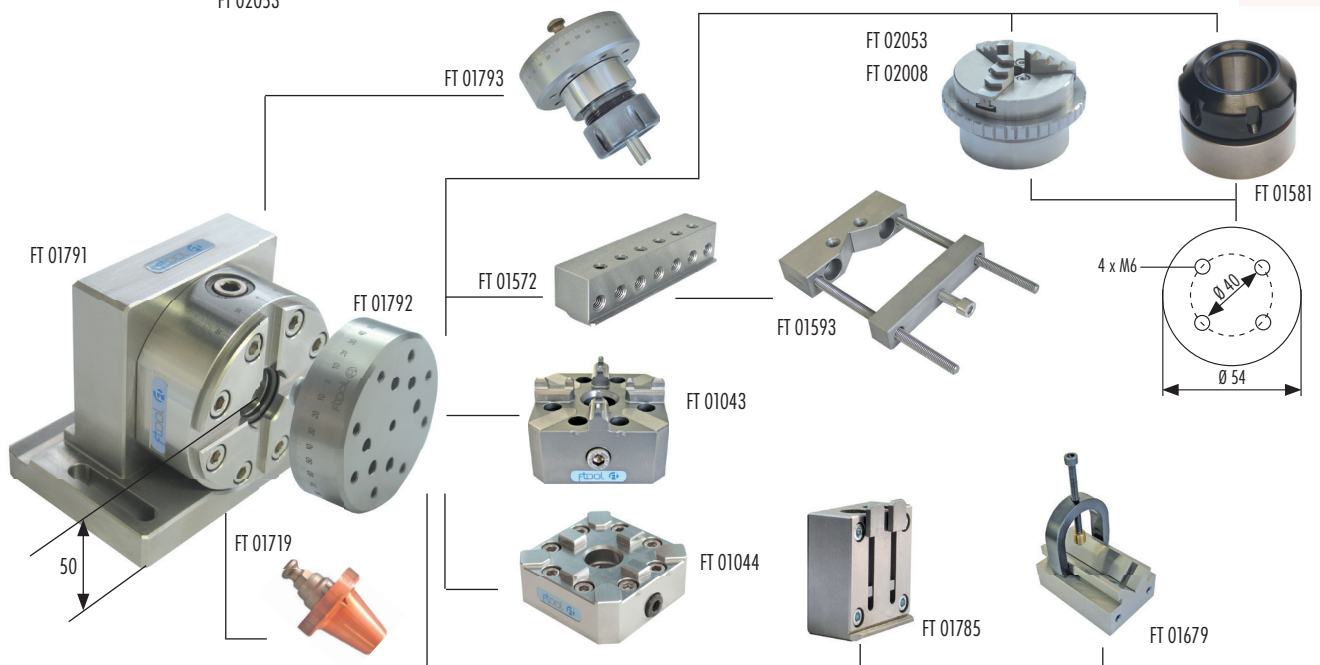


**Rustless, precision three-jawed chuck**

Suitable for the application on EDM wire cutting machines under water. Hardened clamping jaws for the clamping of outside diameter Ø 1 - Ø 60 mm and inside diameter of Ø 12 - Ø 66 mm. Hole pattern 4 x M6, reference circle 40 mm.

Clamping accuracy ± 0.01 mm, maximum work piece weight: 2 kg

Article no.	Article	Quantity	Weight	Code
FT 02008	3 Jaw scroll chuck DBF63 rustless 0-56 mm Ø 70 mm L = 40 mm	1 piece	0.76 kg	P
FT 02053	3 Jaw scroll chuck DBF63 rustless with exchangeable soft jaws	1 piece	0.72 kg	P



**F-Tool Z-Flex and Z-Flex support**



**F-Tool Z-Flex**

The Z-Flex could be clamped frontal in all clamping beams with cross holes Ø M10, distance 20 mm, or in the front spanners FT 01350 and FT 01572. With the Z-Flex you could adjust the supporting surface in state of the clamped work piece on 0.2 mm. Appropriate for the levelling of plates and work pieces. Delivered without brackets and allen key.

Article no.	Article	Quantity	Weight	Code
FT 01600	FTool Z-Flex	1 piece	0.36 kg	W



**F-Tool Z-Flex support**

The Z-Flex support is ideal for the support of big plates. He can be clamped directly of the machine table. This plates can be levelled after the clamping in combination with the Z-Flex (FT. The Z-Flex can be assembled on the front, right or left side of the Z-Flex support.

Dimensions: L = 170 / B = 46 / H = 27 mm

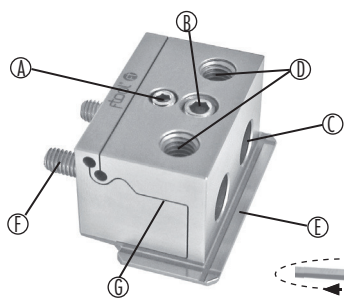
Article no.	Article	Quantity	Weight	Code
FT 01760	FTool Z-Flex support (without Z-Flex)	1 piece	1.60 kg	W

Delivered incl. brackets, Z-disc and miscellaneous screw material.

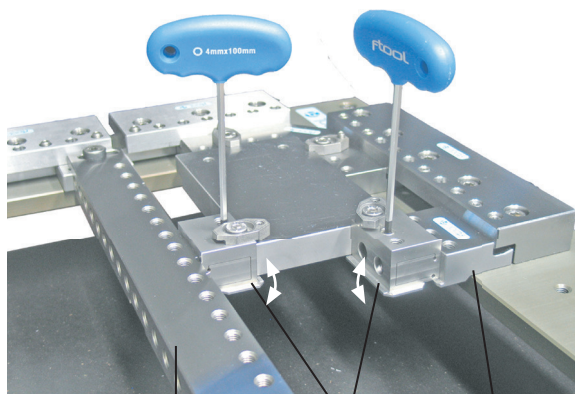
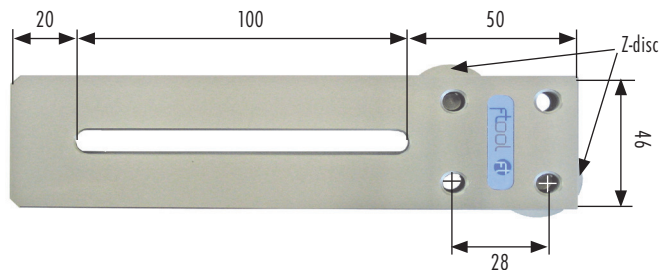
**Combination examples:**

**F-Tool Z-Flex**

- Ⓐ = adjusting screw Z-
- Ⓑ = adjusting screw Z+
- Ⓒ = fixing holes
- Ⓓ = clamping bracket holes
- Ⓔ = clamping lip
- Ⓕ = fixing screw
- Ⓖ = exposing-slot



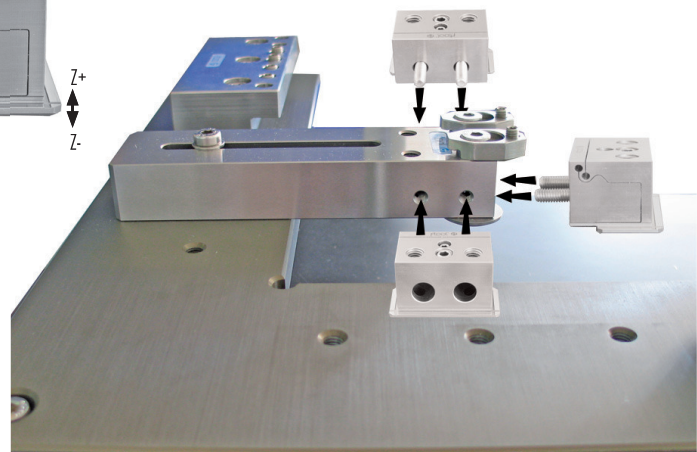
**F-Tool Z-Flex support**



FT 01063-65 / FT 01327

FT 01600

FT 01350



The F-Tool Z-Flex (FT 01600) can be assembled on the front, the right and the left side of the Z-Flex support (FT 01760).



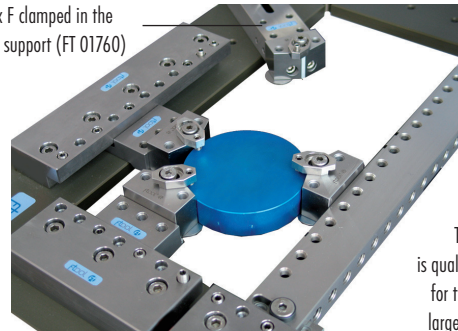
### F-Tool DiaFix

As a support or clamping support plate of large, round work pieces. Frontal assembled, the DiaFix can be inserted into the clamping beams, the front spanner (FT 01350) and the Z-Flex support (FT 01760).

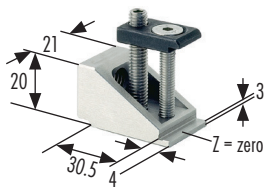
The set contains: 3 x support plate with the appropriate clamping appliances

Article no.	Article	Quantity	Weight	Code
FT 01879	FTool DiaFix F	Set of 3 pieces	1.30 kg	B

DiaFix F clamped in the Z-Flex support (FT 01760)



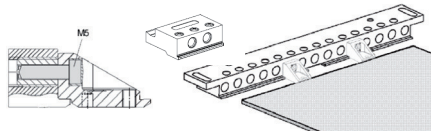
The DiaFix F-set is qualified especially for the clamping of large, round pieces.



### F-Tool distance support mini

For the clamping of small work pieces, respective thin plates. Can be inserted into the clamping beam, into the front spanner (FT 01350) or into the front spanner 140 x 30 x 35 mm (FT 01572).

Article no.	Article	Quantity	Weight	Code
FT 01066	FTool distance support mini	1 piece	0.18 kg	B



FT 01839



### F-Tool beamwise single

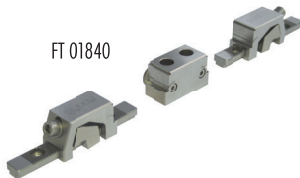
Variable vise with a flexible and a stop jaw for the assembling on the F-Tool beams with support plates. Hardened, grinded, rust-resistant.

Article no.	Article	Quantity	Weight	Code
FT 01839	FTool Beamwise single 100 mm	1 piece	0.66 kg	W

#### Combination example:



FT 01840

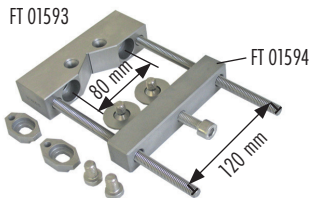


### F-Tool beamwise twin

Variable vise with two flexible and a stop jaw with double-sided support plate. For the assembling on the F-Tool beams. Hardened, grinded, rust-resistant.

Article no.	Article	Quantity	Weight	Code
FT 01840	FTool Beamwise twin 2 x 100 mm	1 piece	0.87 kg	W

FT 01593

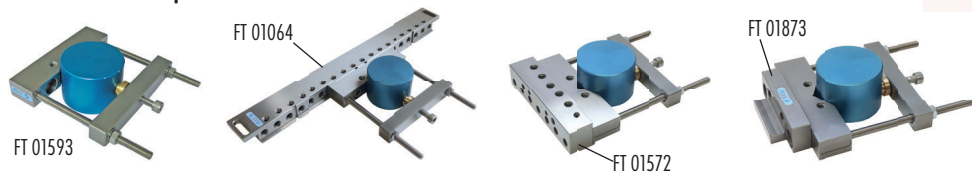


### F-Tool prism holder 110 mm

The prism holder can be assembled frontal in the cross-holes of the beams (FT 01327 / FT 01063 - 65) and in the front spanner (FT 01572). The yoke (FT 01594) can be used directly on the beams and on the front spanner to clamp square pieces as well.

Article no.	Article	Quantity	Weight	Code
FT 01593	FTool prism holder 110 mm complete	1 piece	1.50 kg	W
FT 01594	FTool yoke 140 mm without prism holder	1 piece	0.65 kg	W

#### Combination examples:



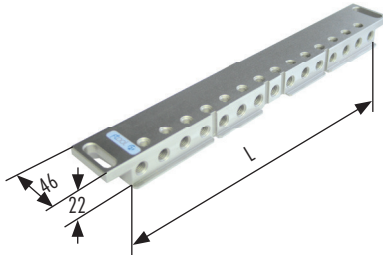
The frame set link contains clamping elements, which can also be inserted in combination with the ER frame set.

**F-Tool beams**

The beams are accurate grinded and consist of hardened, corrosion-resistant, alloyed high-grade steel. The beams are furnished with clamping lips for the work piece clamping on one side and on the other side they can be clamped frontal. With the spacer plates 3 mm (FT 01070) the 3 mm high clamping lip can be lifted over the collision zone.

On the beams without Z-support you can assemble the Z-discs (FT 01911) and the Z-0 base plate (FT 01906).

A beam set consists of: 1 x beam / 2 x FT 01439 spacer plate 60 x 20 x 3 mm / 2 x FT 01441 countersunk screw corrosion-resistant, M8 x 25 / 2 x FT 01377 slide disc



Article no.	Article	Quantity	Weight	Code
FT 01327	FTool beam L = 220 mm with clamping lips	1 piece	1.62 kg	W
FT 01063	FTool beam L = 300 mm with clamping lips	1 piece	1.97 kg	W
FT 01064	FTool beam L = 380 mm with clamping lips	1 piece	2.70 kg	W
FT 01065	FTool beam L = 460 mm with clamping lips	1 piece	3.20 kg	W
FT 01826	FTool beam L = 300/H25 mm without clamping lip	1 piece	2.19 kg	W
FT 01827	FTool beam L = 380/H25 mm without clamping lip	1 piece	2.74 kg	W
FT 01828	FTool beam L = 460/H36 mm without clamping lip	1 piece	5.73 kg	W
FT 02121	FTool clamping beam enforcement 380 / 460 x 36 x 8 mm	1 piece	0.90 kg	W



FT 02121



FT 02121

**F-Tool beam IF**

With the combination of F-Tool beam interfaces, span lengths in 5 mm steps, from 70 mm to 170 mm can be bridged. The FT beams can be assembled sideways or lengthwise. At the insertion of the F-Tool basic ruler, the required bridging width calculates as follows:

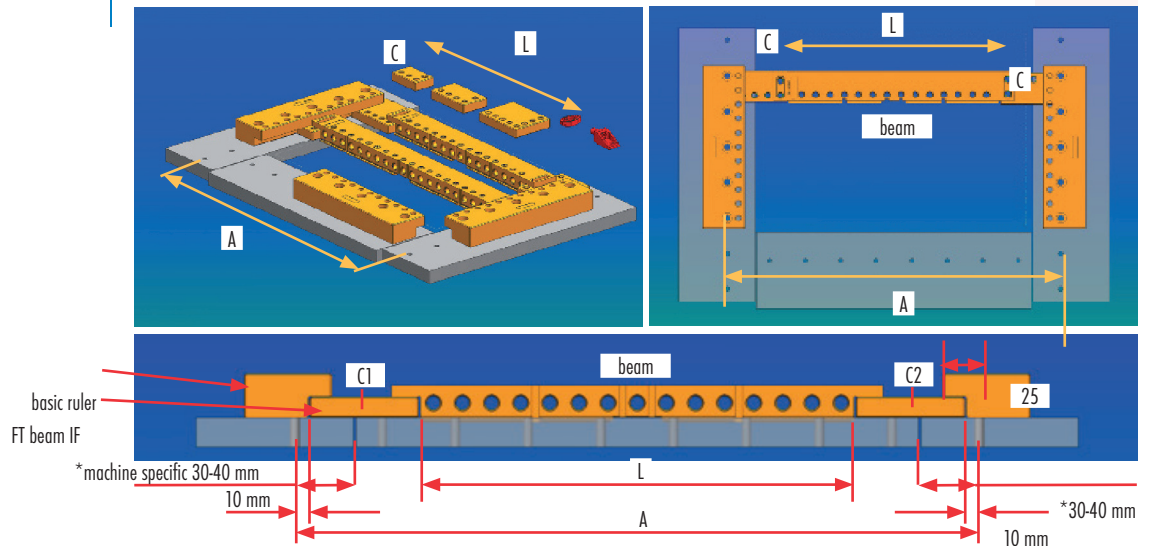
Hole distance assembling basic ruler (A) -20 mm -clamping beam length (L) = IF length total (C)

Example: RFI2050 A 320 -20 -L 220 = C 80 this corresponds the IF length C 1 / 35 mm and C 2 / 45 mm  
 AQ537L A 470 -20 -L 300 = C 150 this corresponds 2 x IF lengths C 1 / C 2 = 75 mm  
 or  
 AQ537L A 470 -20 -L 380 = C 70 this corresponds 2 x IF lengths C 1 / C 2 = 35 mm



Article no.	Article	Quantity	Weight	Code
FT 01568	FTool beam IF 14/35/55 mm	1 piece	0.24 kg	W
FT 01569	FTool beam IF 14/45/75 mm	1 piece	0.41 kg	W
FT 01570	FTool beam IF 14/65/85 mm	1 piece	0.61 kg	W
FT 01825	FTool beam IF 14/65/95 mm	1 piece	0.68 kg	W

**Combination examples:**



**F-Tool swivel interface 3R 22**

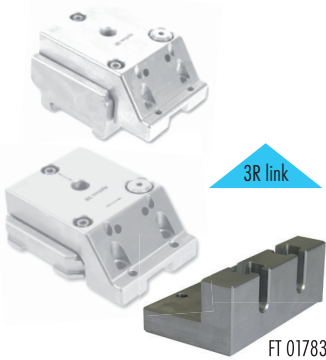
This swivel interface 3R 22 is useful to integrate the practical and economic F-Tool frame pallets and vises into the 3R system.



Article no.	Article	Quantity	Weight	Code
FT 01782	FTool swivel interface 3R 22	1 piece	0.93 kg	B
<b>Options:</b>				
FT 01318	FTool vise 55F18	1 piece	1.07 kg	W
FT 01319	FTool vise 100F22	1 piece	1.43 kg	W
FT 01358	FTool spacer plate 100 x 29 x H 4 mm	1 piece	0.11 kg	W
FT 01360	FTool frame pallet 100 x 22 mm	1 piece	3.28 kg	W
FT 01361	FTool universal pallet 22 mm	1 piece	3.80 kg	W
FT 01362	FTool blank pallet 22 mm	1 piece	2.75 kg	W
FT 01363	RefTool IF pallet 14 mm	1 piece	1.34 kg	W
FT 01448	FTool Spacer plate 100 x 29 x H 12 mm	1 piece	0.31 kg	W
FT 01573	FTool frame pallet 75 x 75 x 10 mm without clamping beam	1 piece	0.85 kg	W
FT 01574	FTool frame pallet 135 x 75 x 10 mm without clamping beam	1 piece	1.50 kg	W

**F-Tool swivel interface 3R 90°**

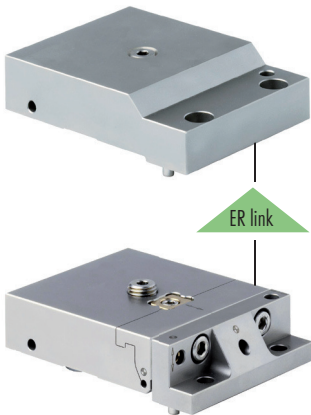
This swivel interface 3R 90° is useful to integrate a great many of F-Tool clamping pieces into the 3R system.



Article no.	Article	Quantity	Weight	Code
FT 01783	FTool swivel interface 3R 90°	1 piece	0.96 kg	B
<b>Options:</b>				
FT 01320	FTool vise 80VL50	1 piece	1.40 kg	W
FT 01321	FTool vise 20VL24	1 piece	0.26 kg	W
FT 01326	FTool magnetic table 140 x 50 x 44 mm	1 piece	2.60 kg	W
FT 01339	FTool interface plate 146 x 56 x 12 mm	1 piece	1.30 kg	W
FT 01343	FTool Interface uniplate for vise 20VL24	1 piece	0.22 kg	W

**F-Tool interfaces EROWA**

The practical and economic F-Tool frame pallets and vises can be inserted in the EROWA palletset W as well. It must be pointed out, that pin and excentric in the palletset W holder have to be removed on this application.



Article no.	Article	Quantity	Weight	Code
FT 01046	FTool basic WEDM fix holder palletset W	1 piece	3.10 kg	B
FT 01047	FTool basic WEDM pendulum holder palletset W	1 piece	3.25 kg	B
<b>Options:</b>				
FT 01318	FTool vise 55F18	1 piece	1.07 kg	W
FT 01319	FTool vise 100F22	1 piece	1.43 kg	W
FT 01358	FTool spacer plate 100 x 29 x H 4 mm	1 piece	0.11 kg	W
FT 01360	FTool frame pallet 100 x 22 mm	1 piece	3.28 kg	W
FT 01361	FTool universal pallet 22 mm	1 piece	3.80 kg	W
FT 01362	FTool blank pallet 22 mm	1 piece	2.75 kg	W
FT 01363	RefTool IF pallet 14 mm	1 piece	1.34 kg	W
FT 01448	FTool Spacer plate 100 x 29 x H 12 mm	1 piece	0.31 kg	W
FT 01573	FTool frame pallet 75 x 75 x 10 mm without clamping beam	1 piece	0.85 kg	W
FT 01574	FTool frame pallet 135 x 75 x 10 mm without clamping beam	1 piece	1.50 kg	W

**F-Tool ICS adapter**

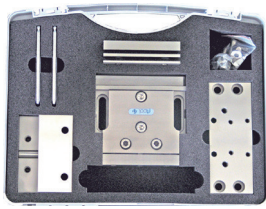
With the F-Tool ICS adapter, available ICS clamping elements can be received, respectively continued to use in the F-Tool basic rulers.



Article no.	Article	Quantity	Weight	Code
FT 02033	FTool ICS Adapter 22	1 piece	0.48 kg	W
FT 02034	FTool ICS Adapter 12	1 piece	0.32 kg	W

**Combination examples:**





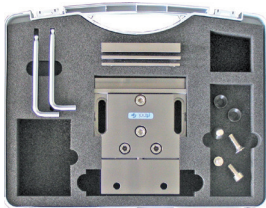
### F-Tool swivel table complete

Complete adjustment table with all cutting sites for high or flat clamping elements.

Hole distance: X = 100 mm

The set contains: swivel table with IF 22 (FT 01357) and IF 90° (FT 01359) / spacer plate 3 mm (FT 01070) / spacer plate 4 mm (FT 01358) / spacer plate 12 mm (FT 01448) / interface plate 146 x 56 x 12 mm (FT 01339) / miscellaneous screws and keys

Article no.	Article	Quantity	Weight	Code
FT 01354	FTool swivel table complete	1 piece	5.28 kg	W



### F-Tool swivel table with IF 22

Basic equipment F-Tool adjustment table to adapt predominantly flat clamping elements.

Installation size: 175 x 120 x 30 mm / hole distance: X = 100 mm

The set contains: swivel table with IF 22 / spacer plate 3 mm (FT 01070) / spacer plate 4 mm (FT 01358) / spacer plate 12 mm (FT 01448) / miscellaneous screws and keys

Article no.	Article	Quantity	Weight	Code
FT 01355	FTool swivel table with IF 22	1 piece	3.70 kg	W

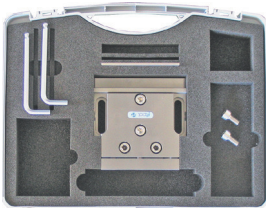


### F-Tool swivel interface 90°

For the frontal collet of miscellaneous clamping elements or work pieces. As option to the swivel table IF 22 (FT 01355).

Article no.	Article	Quantity	Weight	Code
FT 01359	FTool swivel interface 90°	1 piece	0.65 kg	W

→ Delivered with cylinder bolt and miscellaneous screws



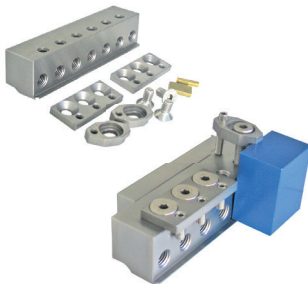
### F-Tool swivel table with IF 90°

Basic equipment adjustment table to adapt predominantly high clamping elements and for the frontal collet of miscellaneous clamping elements or work pieces.

Installation size: 145 x 120 x 30 mm / hole distance: X = 100 mm

The set contains: swivel table with IF 90° / spacer plate 3 mm (FT 01070) / miscellaneous screws and keys

Article no.	Article	Quantity	Weight	Code
FT 01356	FTool swivel table with IF 90°	1 piece	3.10 kg	W



### F-Tool front spanner

For the direct collet of miscellaneous work pieces. As option to the swivel table IF 90° (FT 01356), to the 3D swivel with front spanner (FT 01693) and to the WEDM square block-index-table 80 (FT 01791).

Article no.	Article	Quantity	Weight	Code
FT 01572	FTool front spanner 140 x 30 x 35 mm complete with brackets	1 piece	1.46 kg	W

→ Delivered with miscellaneous screws, keys, insert plates, distance pieces and brackets

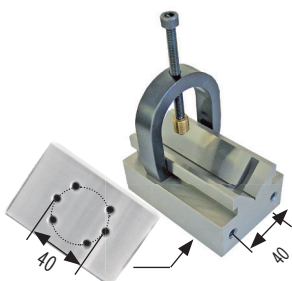


### F-Tool swivel interface 22

For the collet of miscellaneous flat clamping elements. As option to the swivel table IF 90° (FT 01356).

Article no.	Article	Quantity	Weight	Code
FT 01357	FTool swivel interface 22	1 piece	0.85 kg	W

→ Delivered with cylinder bolt and miscellaneous screws



Hole pattern from the bottom

### F-Tool V-block corrosion-resistant

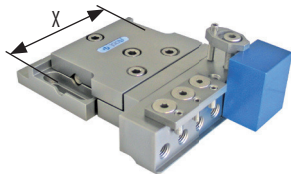
The V-Block is qualified for the fast clamping of arborees, punches and pushers up to Ø 32 mm. It can be assembled frontally or from the back on diverse F-Tool holders. The best compatibility is with the uniplate EWIS (FT 01080), the F-Tool ER-plate EWIS (FT 01435), the F-Tool basic plate IF3R (FT 01135) and the F-Tool universal index adapter plate 80 with graduation (FT 01792). For the application on EDM, WEDM and grinding machines.

Article no.	Article	Quantity	Weight	Code
FT 01679	FTool V-block corrosion-resistant	1 piece	1.64 kg	W

# F-Tool WEDM pendulum holder

With the pendulum holder, work pieces can be aligned independent with 2 screws (per level) in the X- and Y-level. The pendulum holder can be clamped directly on the zero level of the machine table or underneath the basic ruler. To adapt the several clamping elements, two different adapter types are available:

- a) the adapter for rather flat collets, the interface 22 (IF 22)
- b) the adapter for rather high collets, the interface 90° (IF 90°)



## F-Tool swivel table

Pendulum-table (adjustment table) with receiver. The clamping lip lies in basis zero level. When there is risk of collision, the pendulum-table can be hoisted by 3 mm with the spacer plate (FT 01070).

Hole distance: X = 100 mm

The set contains: swivel table with front spanner / spacer plate 3 mm (FT 01070) / miscellaneous screws, keys and brackets  
 → The swivel table is delivered in the same plastic case like e.g. article no. FT 01354

Article no.	Article	Quantity	Weight	Code
FT 01571	FTool swivel table with front spanner 140 x 30 x 35 mm	1 piece	4.40 kg	W

