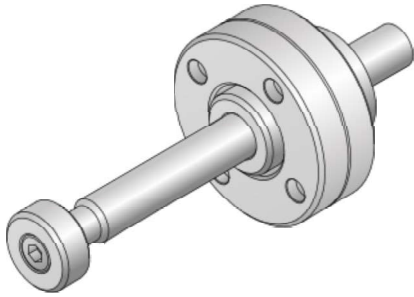


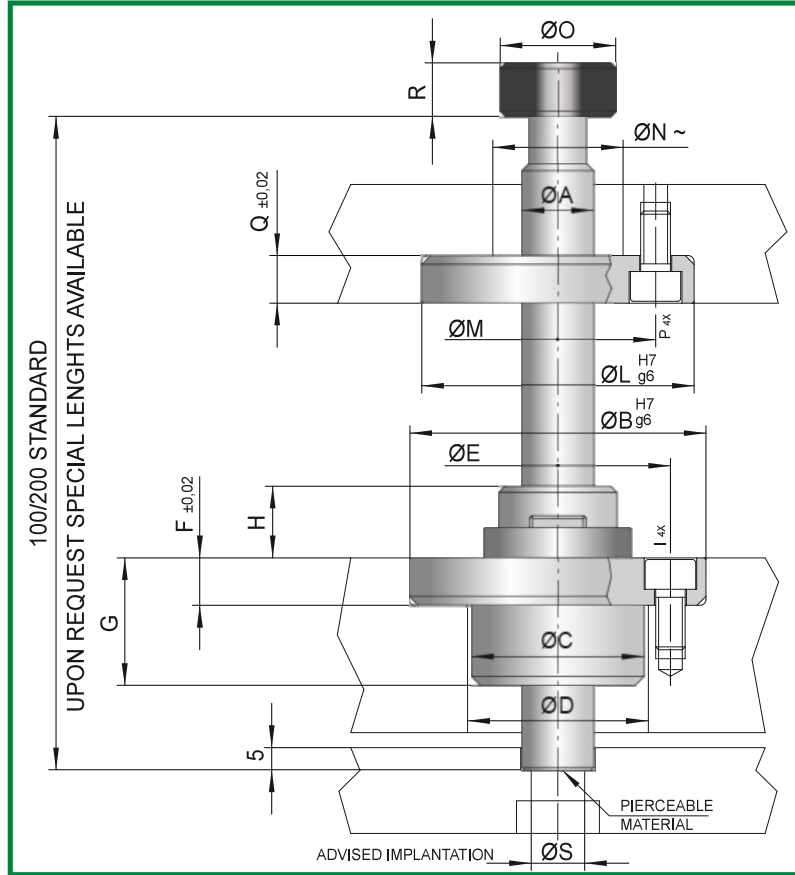
SYSTEMS FOR THE MOVING OF
MECHANICAL ELEMENTS AND MOLDED
PARTS



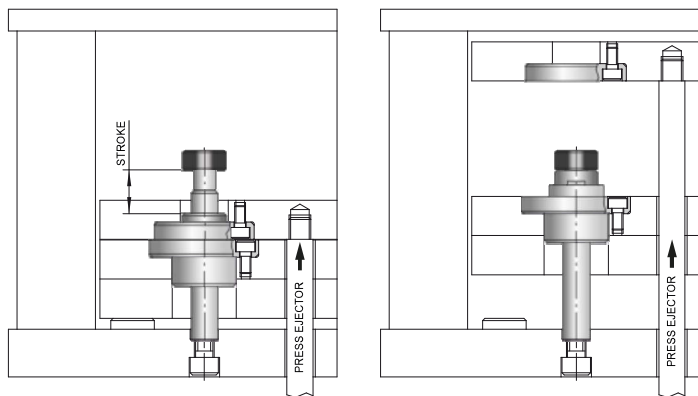
TWO STAGES EJECTOR



CODE: AS



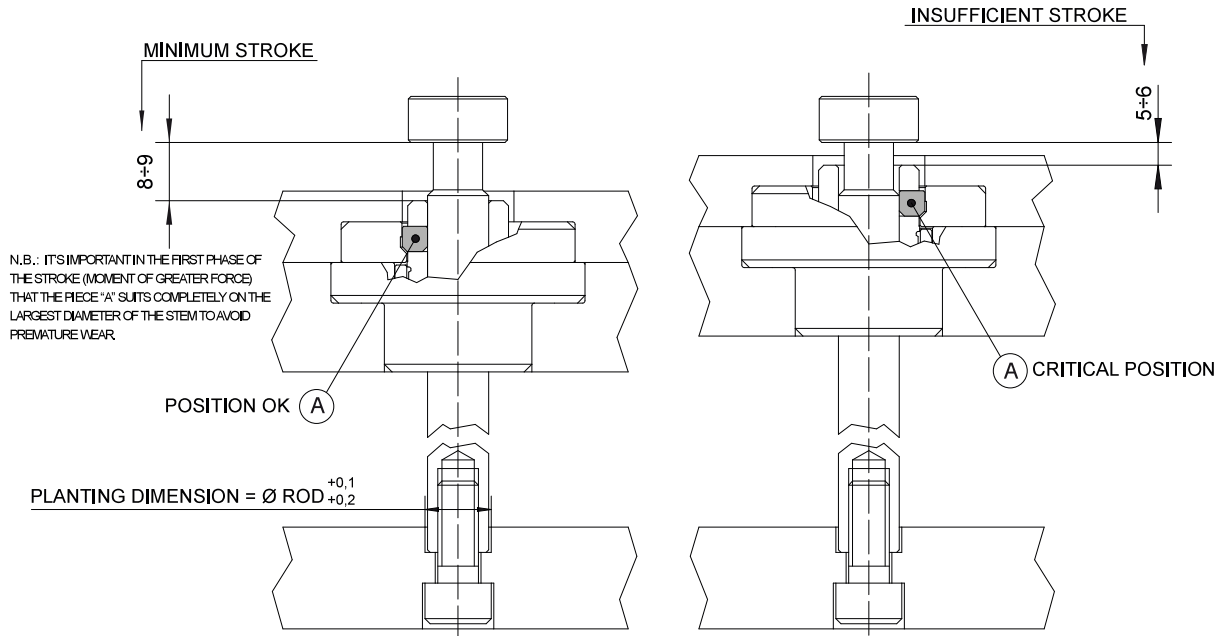
CODE	A	B	C	D	E	F	G	H	I	L	M	N	O	P	Q	R	S	MAX DYNAMIC LOAD
AS-12	12	50	29	29,5	38	8	21,5	12	M5	46	33	22	19,5	M5	8	9	M8	Kg100
AS-16	16	70	41	41,5	52	13	28	17	M8	70	52	33	29	M8	13	12	M10	Kg300



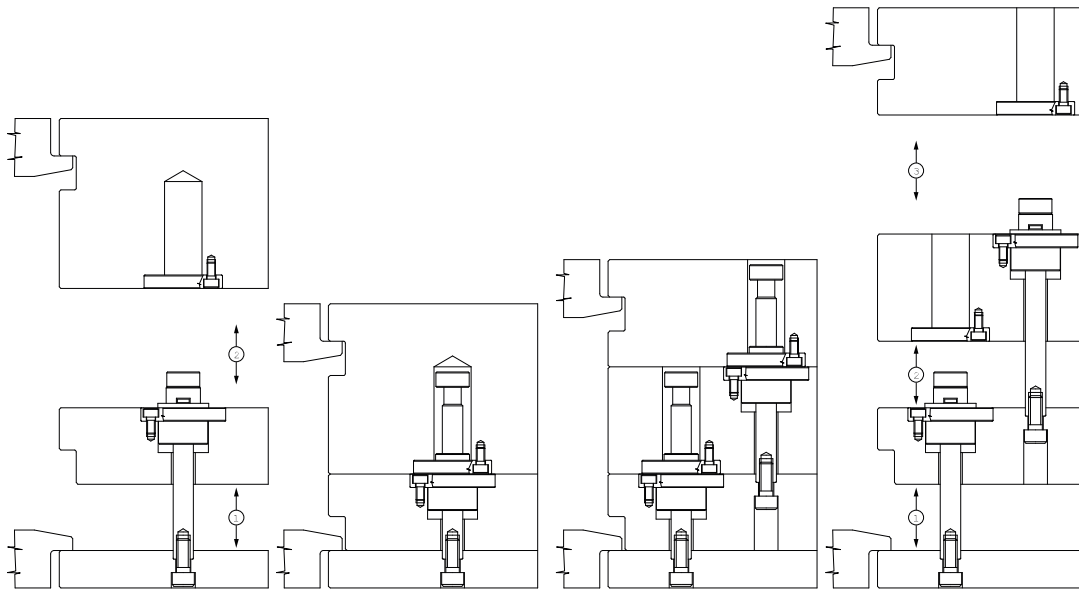
CHARACTERISTICS

- 1) EASE OF APPLICATION;
 - 2) VERSATILITY OF USE;
 - 3) BLOCKAGE OF THE TRAILED PLATE AFTER UNHOOKING;
 - 4) WITHOUT LIMIT OF STROKE;
- N.B.: IT'S IMPORTANT TO OBSERVE THE SUGGESTED MAXIMUM WORKING LOADS.
IN CASE OF UNCERTAIN APPLICATIONS CONSULT THE CONSTRUCTOR.

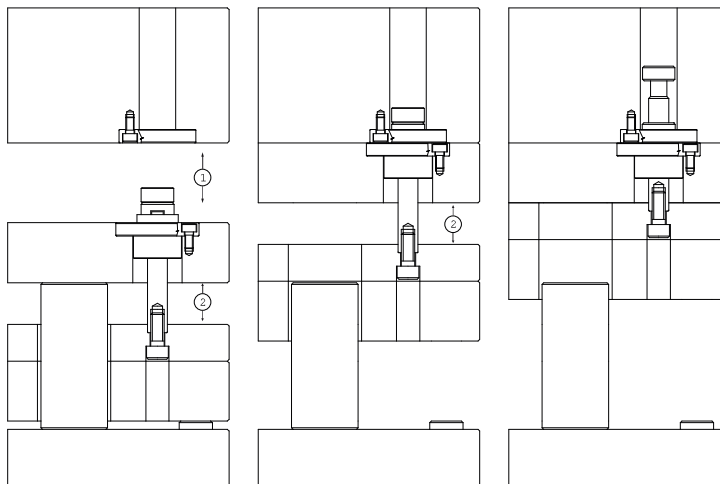
TECHNICAL NOTES FOR THE DESIGNER



EXAMPLES OF APPLICATION



SPECIAL APPLICATION

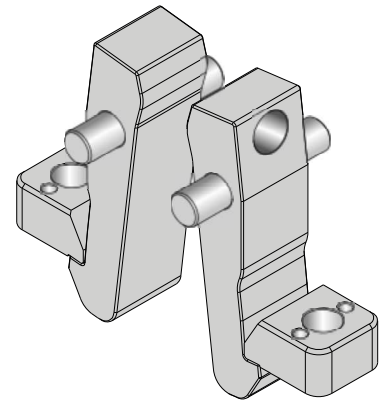
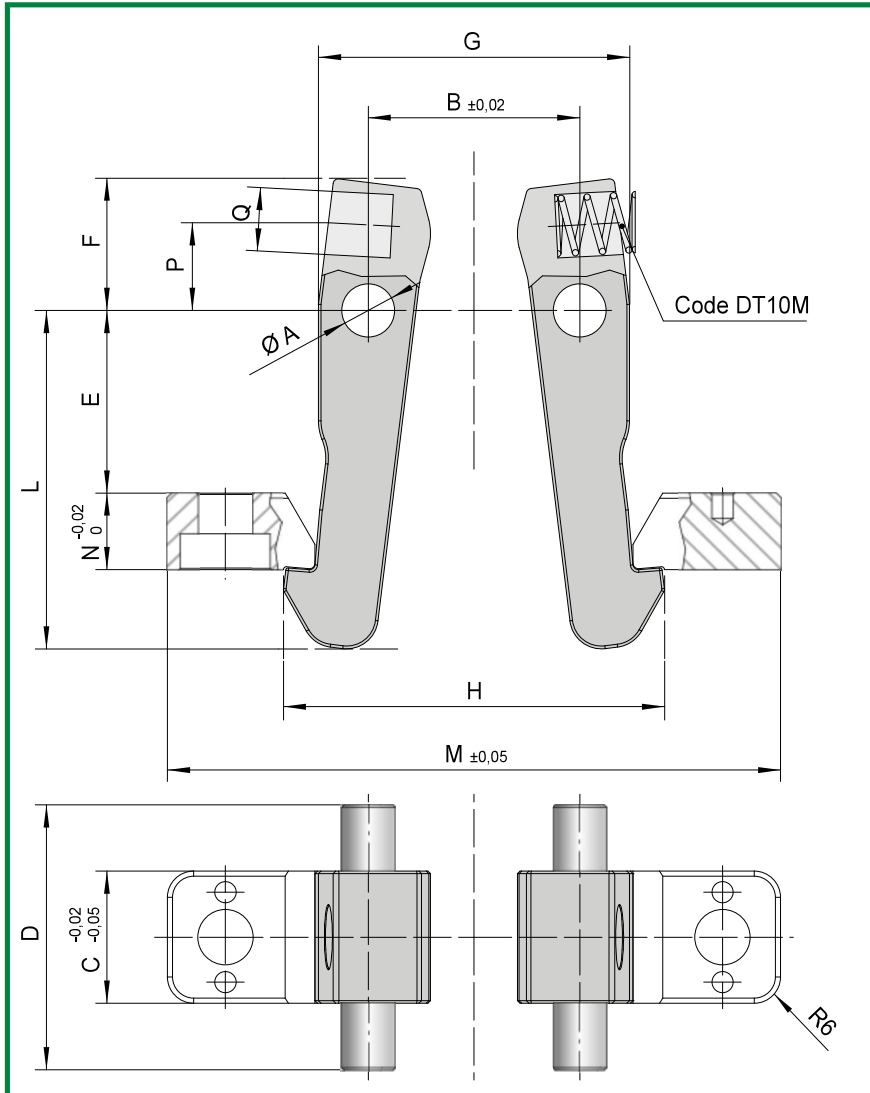




CHARACTERISTICS

- 1) HIGH LOAD CAPACITY;
- 2) EASY INSTALLATION WITH ONLY A SMALL AMOUNT OF MACHINING;
- 3) DOUBLE EJECTION APPLICATION;
- 4) THREE PLATES APPLICATION.

PLATE LOCKS LEVERS DT

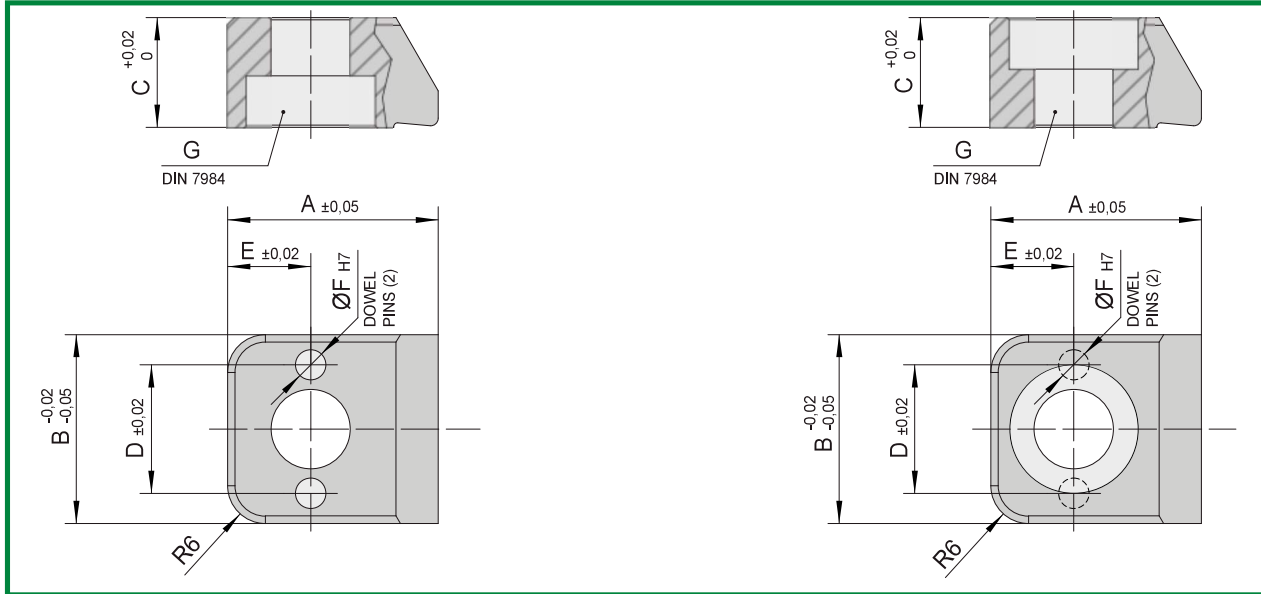


CODE: DT10L

CODE	A	B	C	D	E	F	G	H	L	M	N	P	Q
DT10L	10	40	25	50	34,5	25	59	72,5	64	116	14,5	15,5	12

Mat.: Carbon steel. Hardness: 540 HRV
Carbonitrided depth 0,5mm

LOCK BLOCKS DT



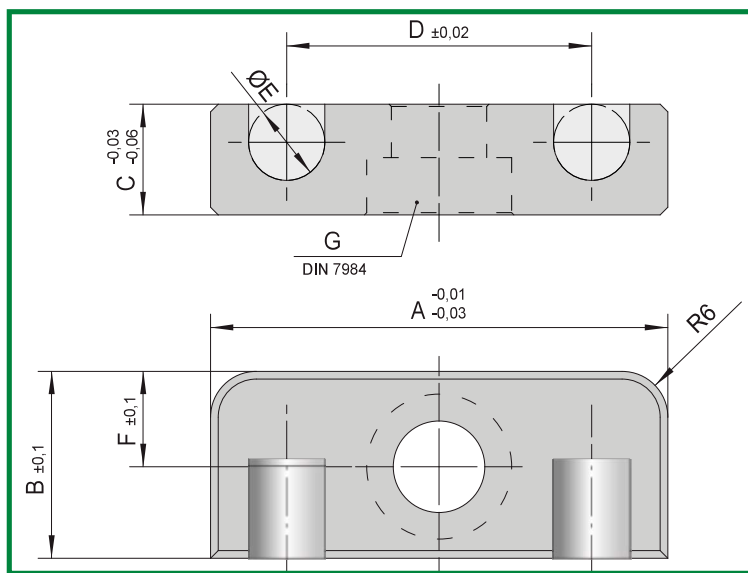
CODE: DT10TI

CODE: DT10TS

CODE	A	B	C	D	E	F	G
DT10TI	27,9	25	14,5	17	11	4	M10
DT10TS	27,9	25	14,5	17	11	4	M10

Mat.: Carbon steel. Hardness: 540 HRV
Carbonitrided depth 0,5mm

DOWELS HOLDING PLATE DT

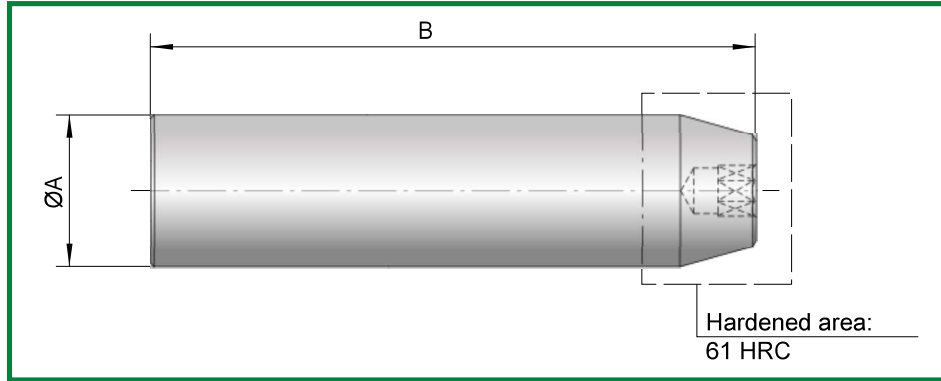


CODE: DT10PS

CODE	A	B	C	D	E	F	G
DT10PS	60	24,5	14,5	40	10	12,5	M12

Mat.: Carbon steel. Hardness: 540 HRV
Nitrided depth 0,3mm

RELEASE ROD DT

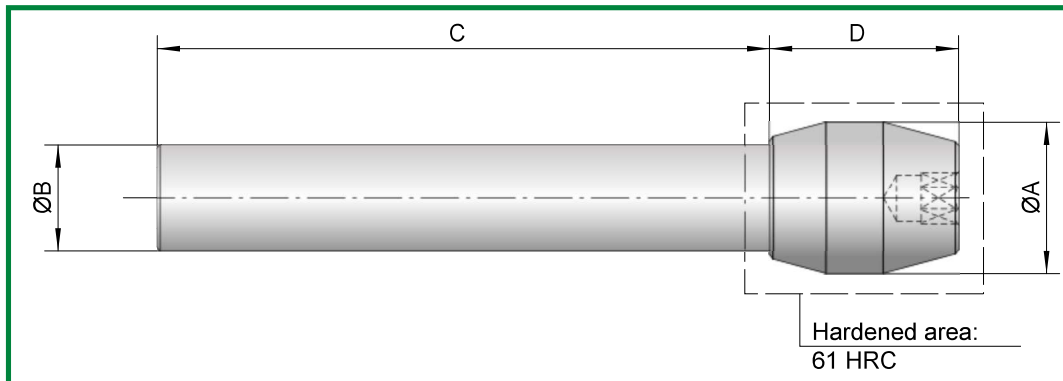


CODE: DT10P

CODE	A	B
DT10P	20	200

Mat.: 7225. Hardness: 800 N/mm² (21,7 HRC)
Nitrided depth 0,1mm

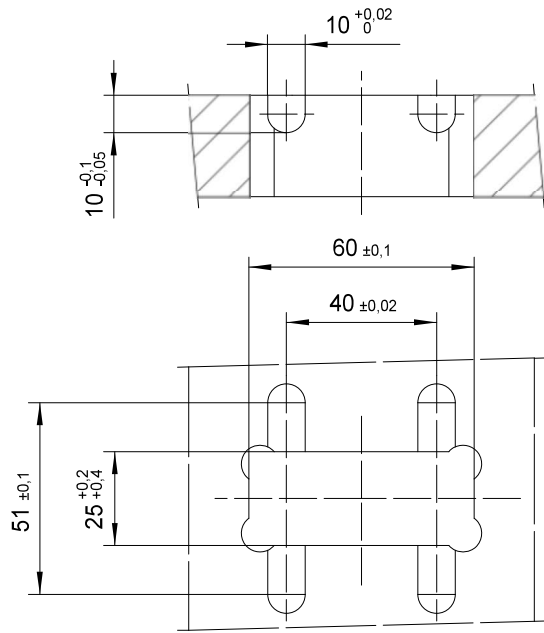
DOUBLE TAPER RELEASE ROD DT



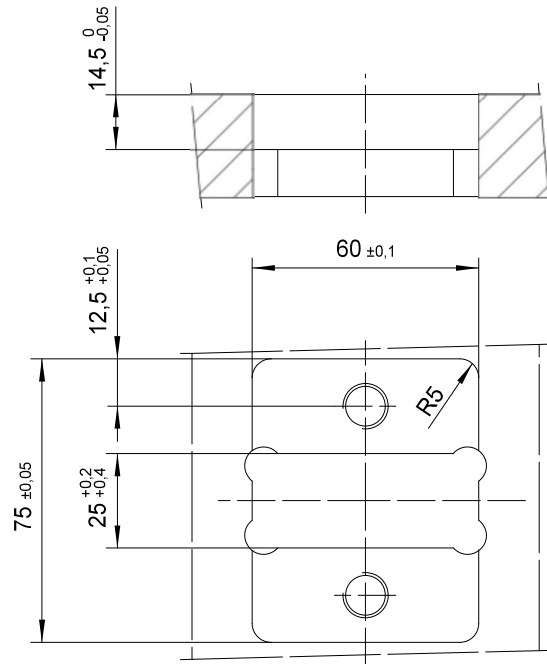
CODE: DT10PDC

CODE	A	B	C	D
DT10PDC	20	14	225	25

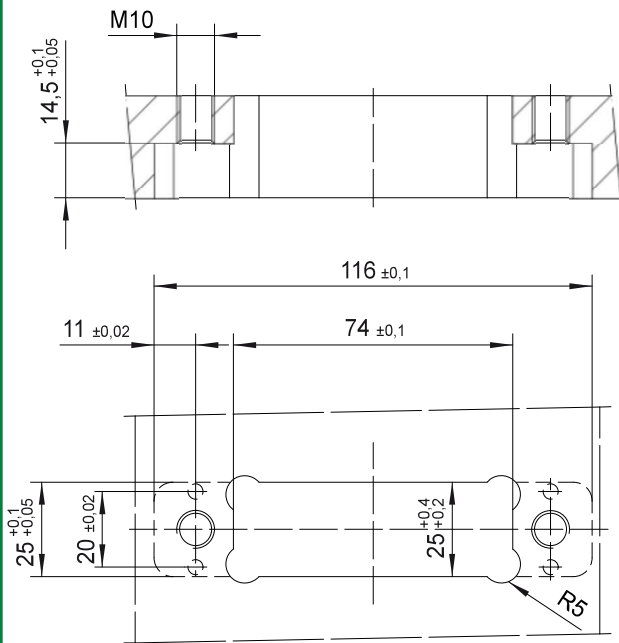
Mat.: 7225. Hardness: 800 N/mm² (21,7 HRC)
Nitrided depth 0,1mm



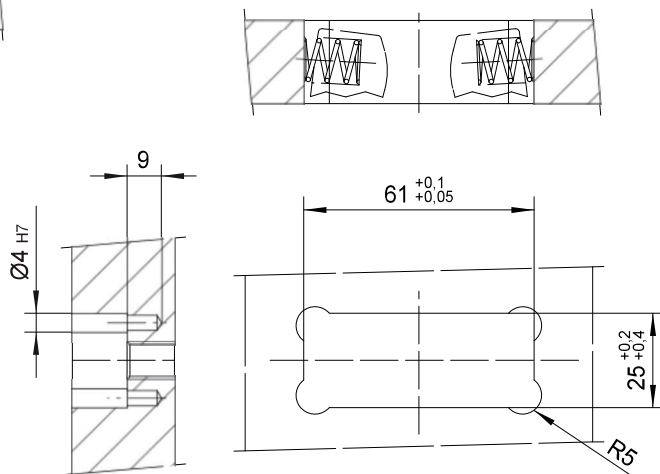
- Suggested seat machining for application without dowels holding plate.



- Suggested seat machining for application with dowels holding plate.

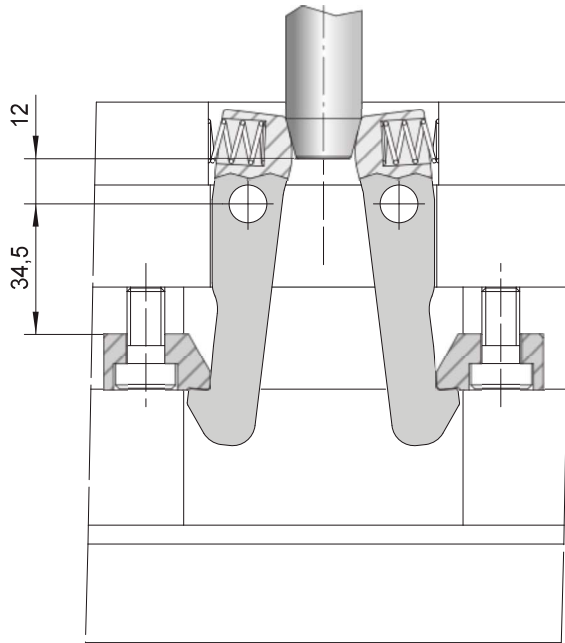


- Seat dimensions for lock blocks application.

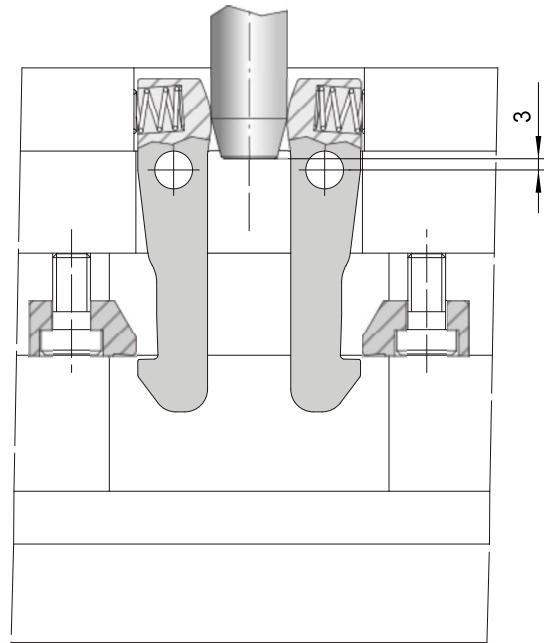


- Seat dimensions for proper spring load.

MINIMUM STROKE



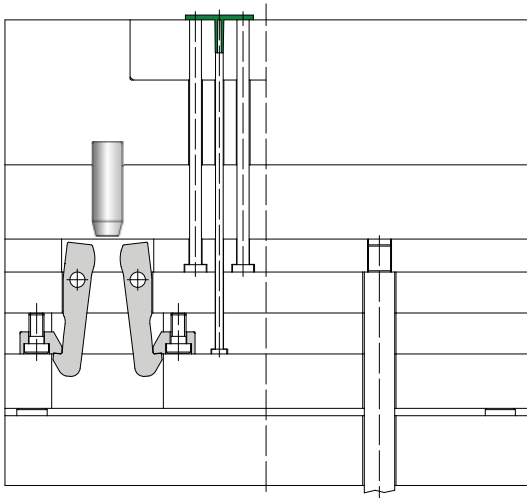
RELEASE STARTING POINT



RELEASE ENDING POINT

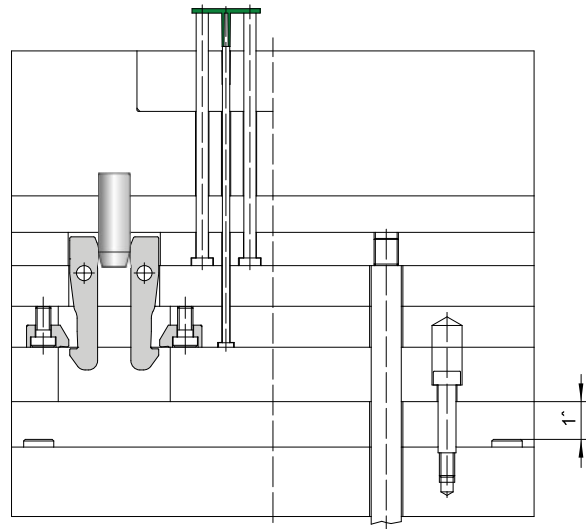
- In order to guarantee a complete release of the system a minimum 9 mm stroke is needed.
- Insert the proper recovery springs during assembly.

DOUBLE EJECTION APPLICATION



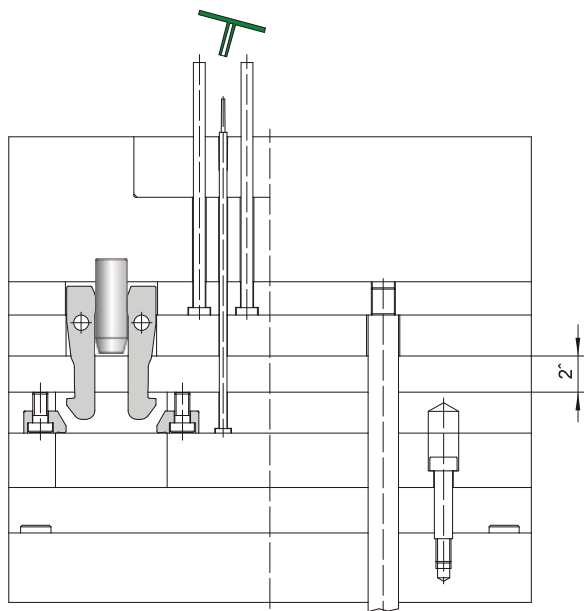
STARTING POSITION

- DT system held closed the ejectors plates



FIRST STROKE

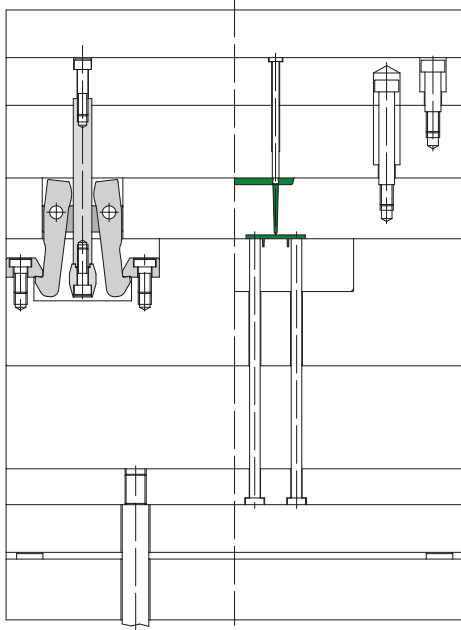
- The ejector plates perform the 1st stroke coupled till the releasing of the system DT



SECOND STROKE

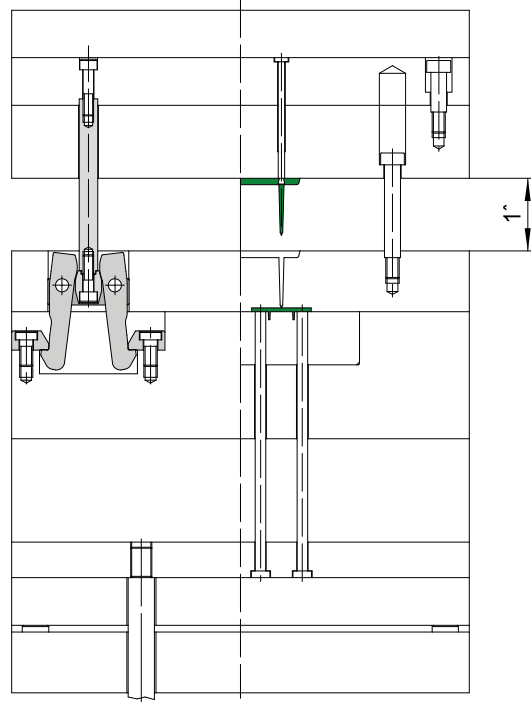
- After DT system release the upper ejector plate performs the second stroke

THREE PLATES APPLICATION



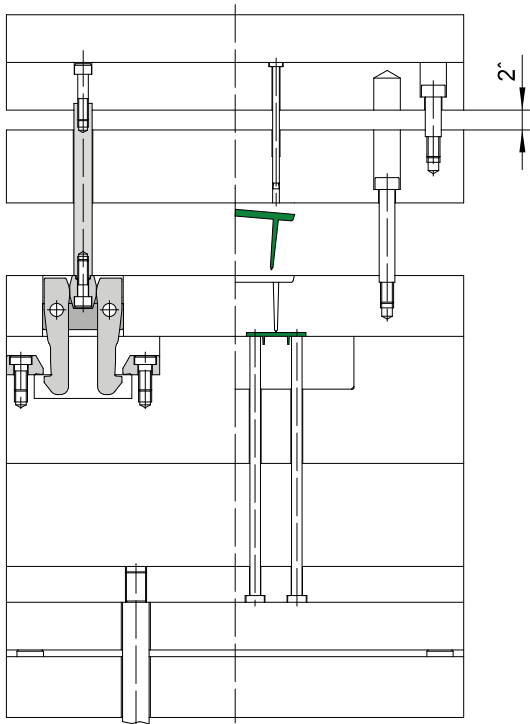
STARTING POSITION

- DT system connects core and cavity side



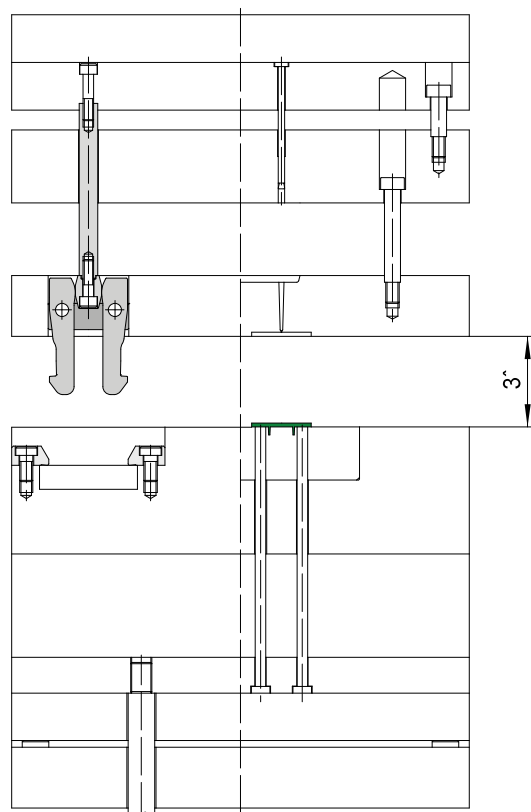
FIRST STROKE

- Parting of the runner system from injected part



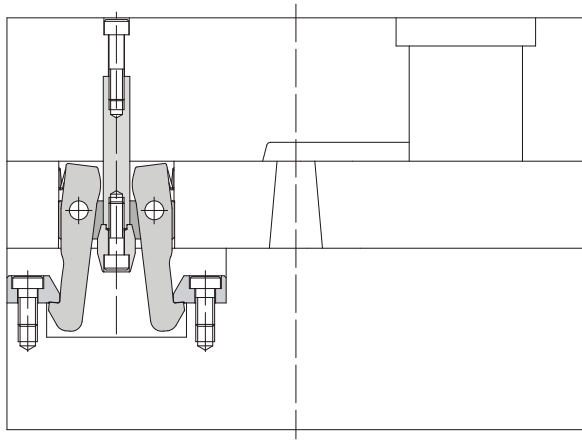
SECOND STROKE

- runner system ejection



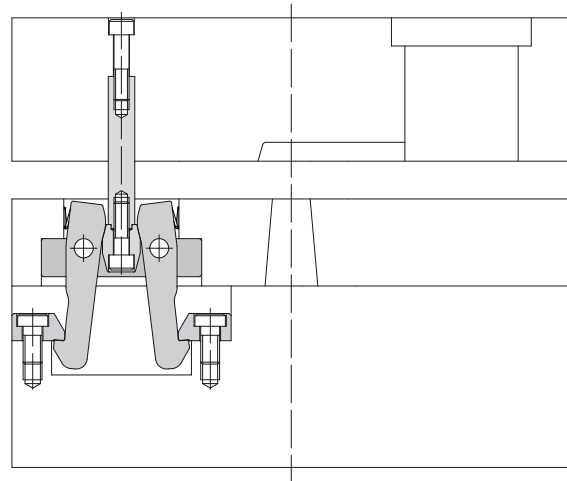
THIRD STROKE

- DT system release with opening of cavity-core parting line



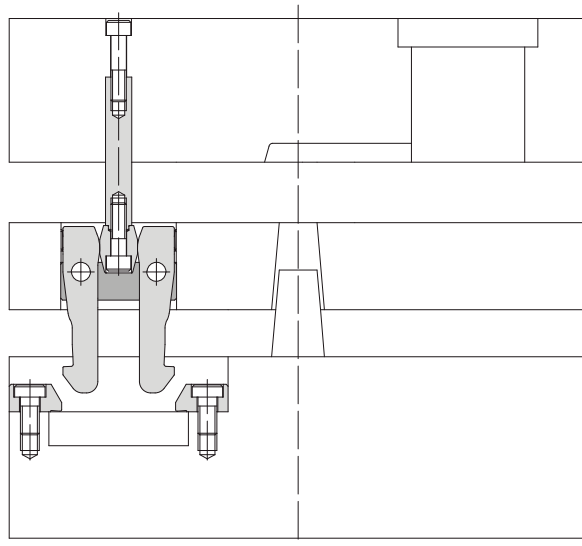
STARTING POSITION

- DT system connects core and cavity sides



FIRST STROKE

- parting of the sprue from runner system



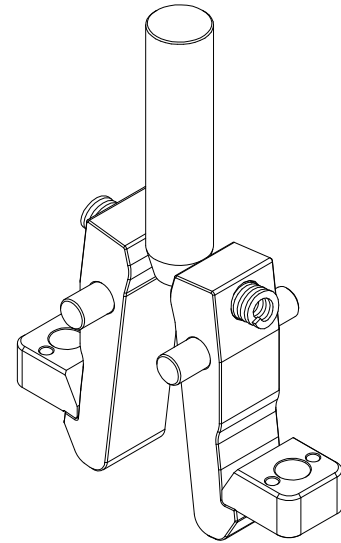
SECOND STROKE

- DT system release with opening of cavity - core parting line

DT PLATE LOCKS KIT

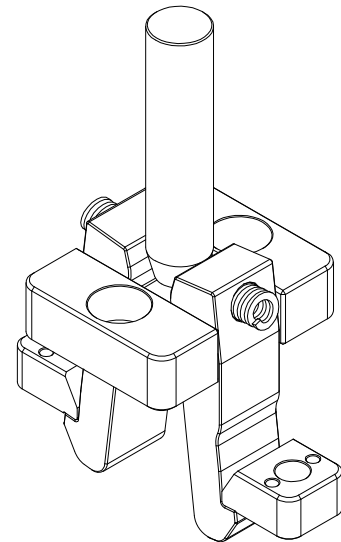
CODE KIT	CODE	COMPONENTS
DT10K1	DT10L	PLATE LOCKS LEVERS DT (2)
	DT10TI	LOCKS BLOCKS DT (2)
	DT10P	RELEASE ROD DT

Kit includes: dowel pins Ø10x50 (2) - fixing screws M10x20 DIN 7984 (2) -
dowel pins Ø4x10 (4) - recovery springs (2)



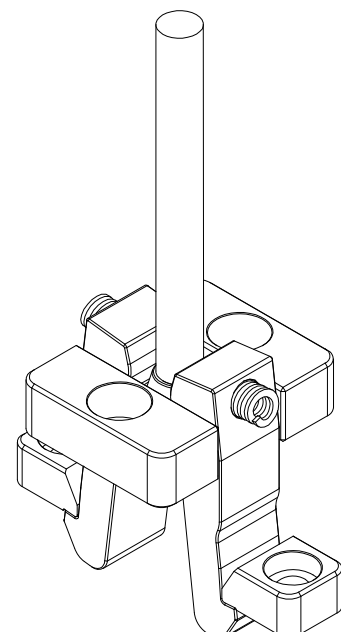
CODE KIT	CODE	COMPONENTS
DT10K2	DT10L	PLATE LOCKS LEVERS DT (2)
	DT10TI	LOCKS BLOCKS DT (2)
	DT10PS	DOWELS HOLDING PLATE DT (2)
	DT10P	RELEASE ROD DT

Kit includes: dowel pins Ø10x50 (2) - fixing screws M10x20 DIN 7984 (2) -
dowel pins Ø4x10 (4) - fixing screws M12x25 DIN 7984 (2) -
recovery springs (2)



CODE KIT	CODE	COMPONENTS
DT10K3	DT10L	PLATE LOCKS LEVERS DT (2)
	DT10TS	LOCKS BLOCKS DT (2)
	DT10PS	DOWELS HOLDING PLATE DT (2)
	DT10PDL	DOUBLE TAPER RELEASE ROD DT

Kit includes: dowel pins Ø10x50 (2) - fixing screws M10x20 DIN 7984 (2) -
dowel pins Ø4x10 (4) - fixing screws M12x25 DIN 7984 (2) -
recovery springs (2)

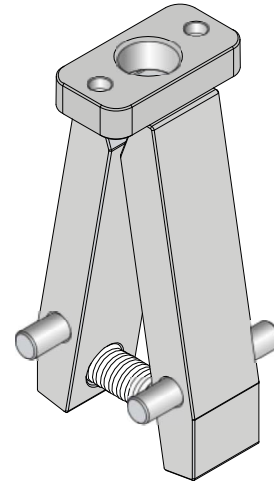
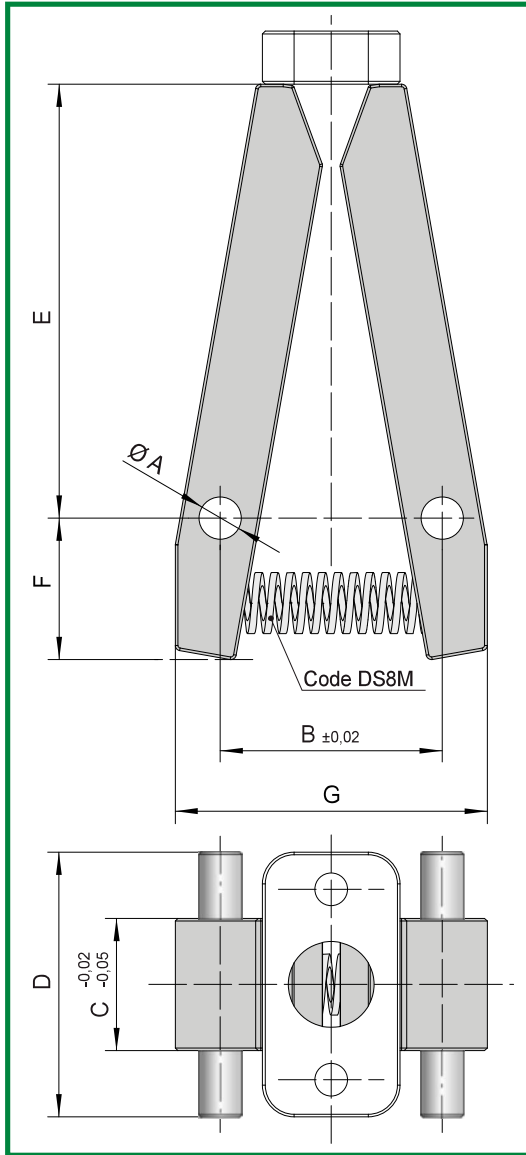




CHARACTERISTICS

- 1) HIGH LOAD CAPACITY;
- 2) EASY INSTALLATION WITH ONLY A SMALL AMOUNT OF MACHINING;
- 3) DOUBLE EJECTION WITH SPACED PLATES DESIGN.

PLATE LOCKS LEVERS DS

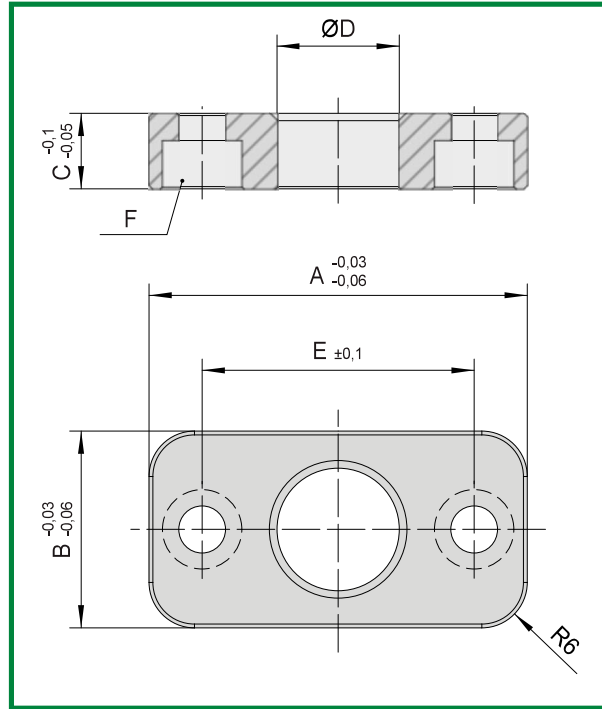


CODE: DS8L

CODE	A	B	C	D	E	F	G
DS8L	8	42	25	50	82	27	60

Mat.: Carbon steel. Hardness: 540 HRV
Carbonitrided depth 0,5mm

PUSH PLATE DS

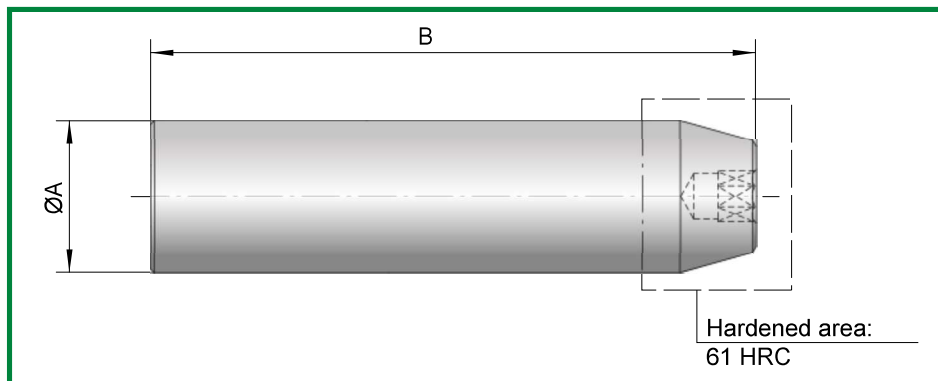


CODE: DS8PA

CODE	A	B	C	D	E	F
DS8PA	50	26	10	16,2	36	M6

Mat.: Carbon steel. Hardness: 540 HRV
Carbonitrided depth 0,5mm

RELEASE ROD DS

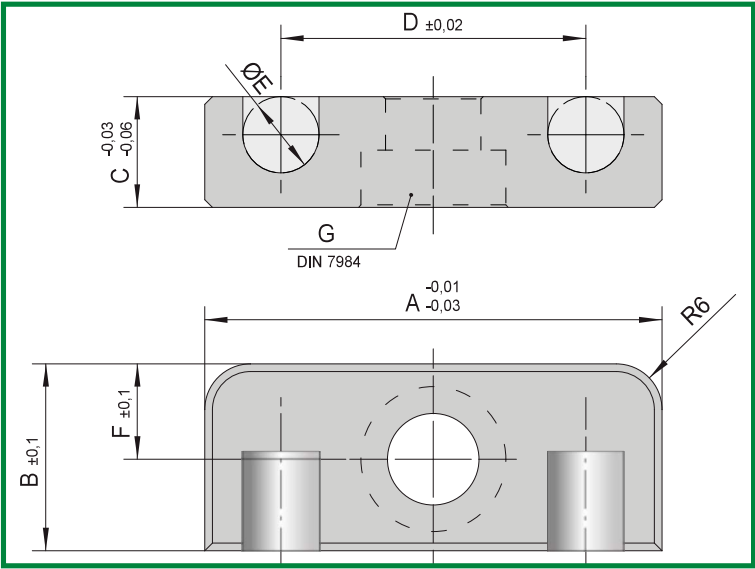


CODE: DS8P

CODE	A	B
DS8P	16	200

Mat.: 7225. Hardness: 800 N/mm² (21,7 HRC)
Nitrided depth 0,1mm

DOWELS HOLDING PLATE DS

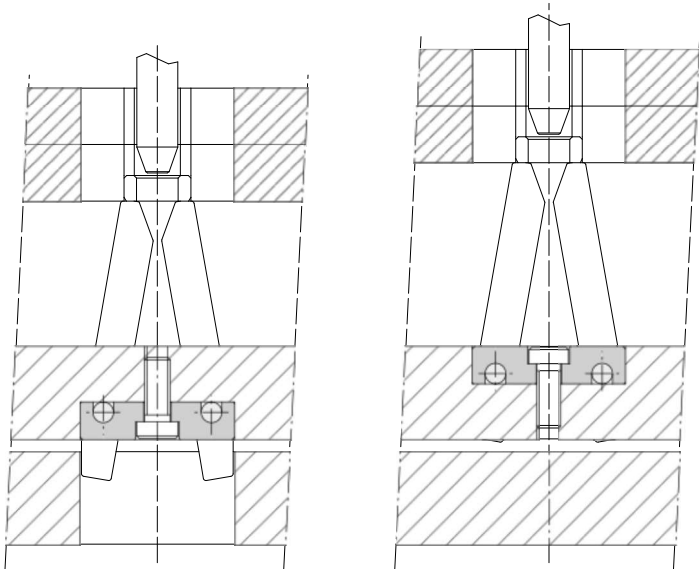


CODE: DS8PS

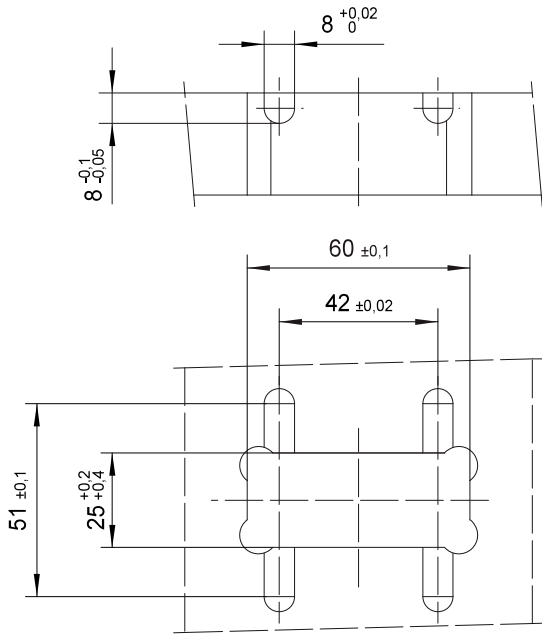
CODE	A	B	C	D	E	F	G
DS8PS	60	24,5	14,5	42	8	12,5	M12

Mat.: Carbon steel. Hardness: 540 HRV
Nitrided depth 0,3mm

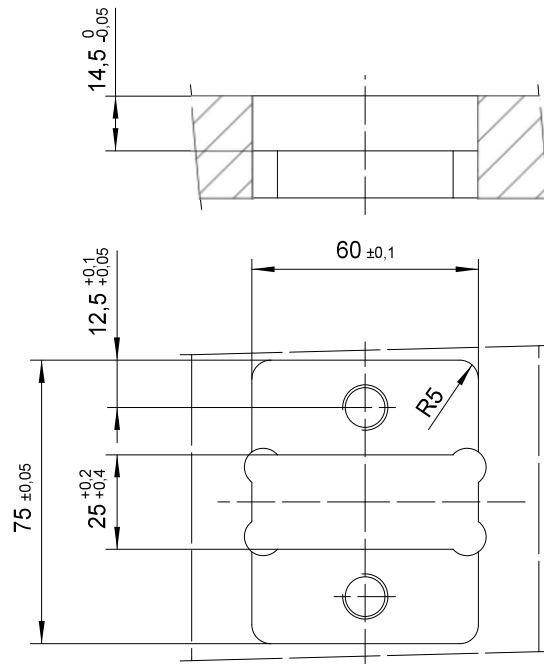
TECHNICAL NOTES



• Dowels holding plate application examples.

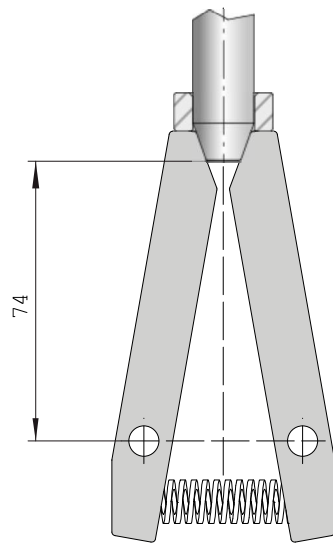


- Suggested seat machining for application without dowels holding plate.

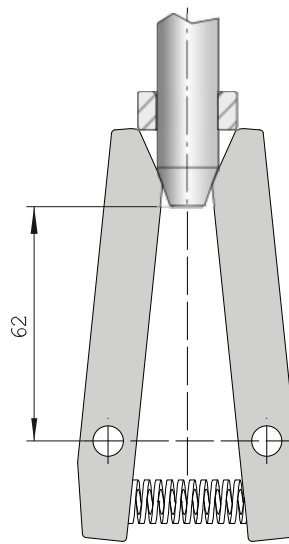


- Suggested seat machining for application with dowels holding plate.

MINIMUM STROKE



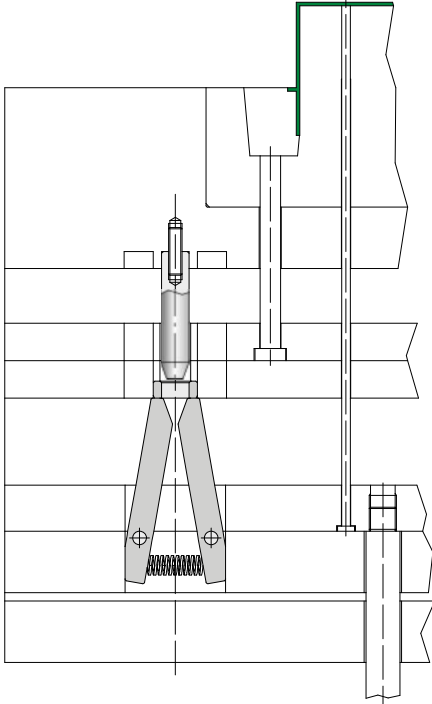
RELEASE STARTING POINT



RELEASE ENDING POINT

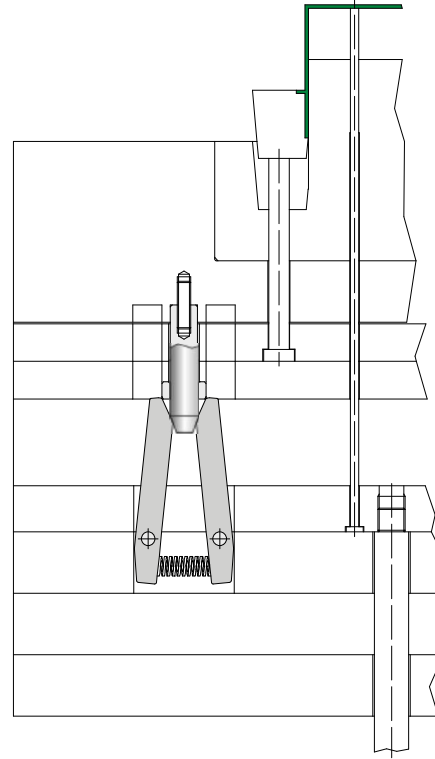
- In order to guarantee a complete release of the system a minimum 12 mm stroke is needed.

DOUBLE EJECTION APPLICATION



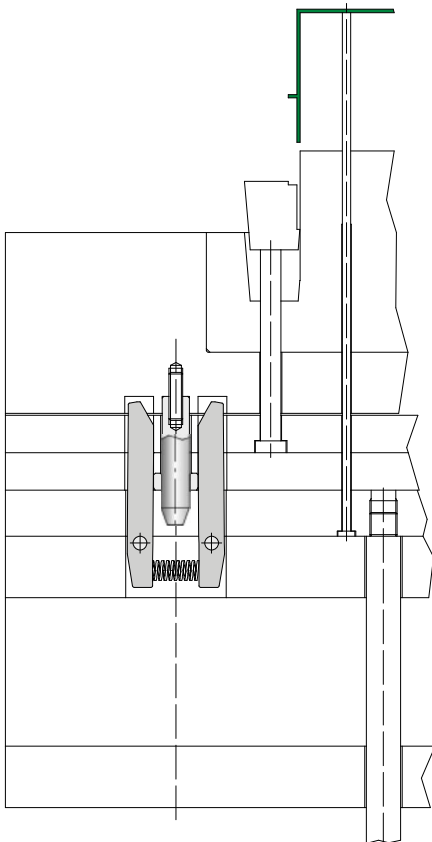
STARTING POSITION

- DS system keeps the ejector plates spaced



FIRST STROKE

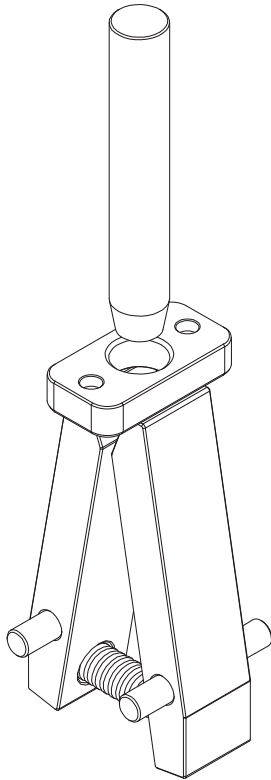
- The lower ejector plate transmits the movement to the upper ejector plate through the DS system. The ejector plates move keeping mutual distance till the achievement of the DS releasing point.



SECOND STROKE

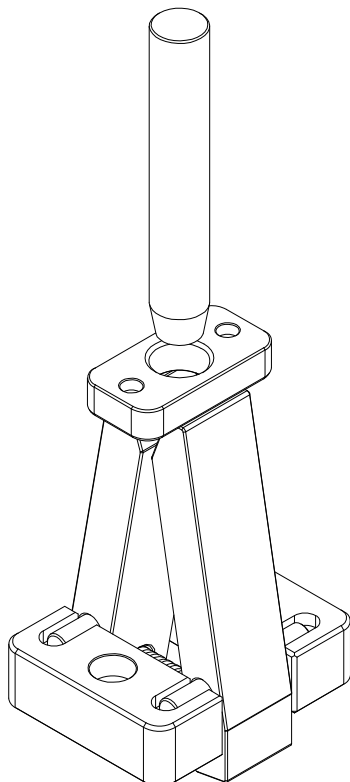
- After the releasing of the DS system the lower ejector plate performs the second stroke

DS PLATE LOCKS KIT



CODE KIT	CODE	COMPONENTS
DS8K1	DS8L	PLATE LOCKS LEVERS DS (2)
	DS8PA	PUSH PLATE DS
	DS8P	RELEASE ROD DS

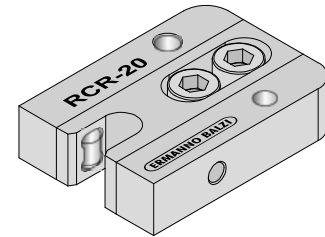
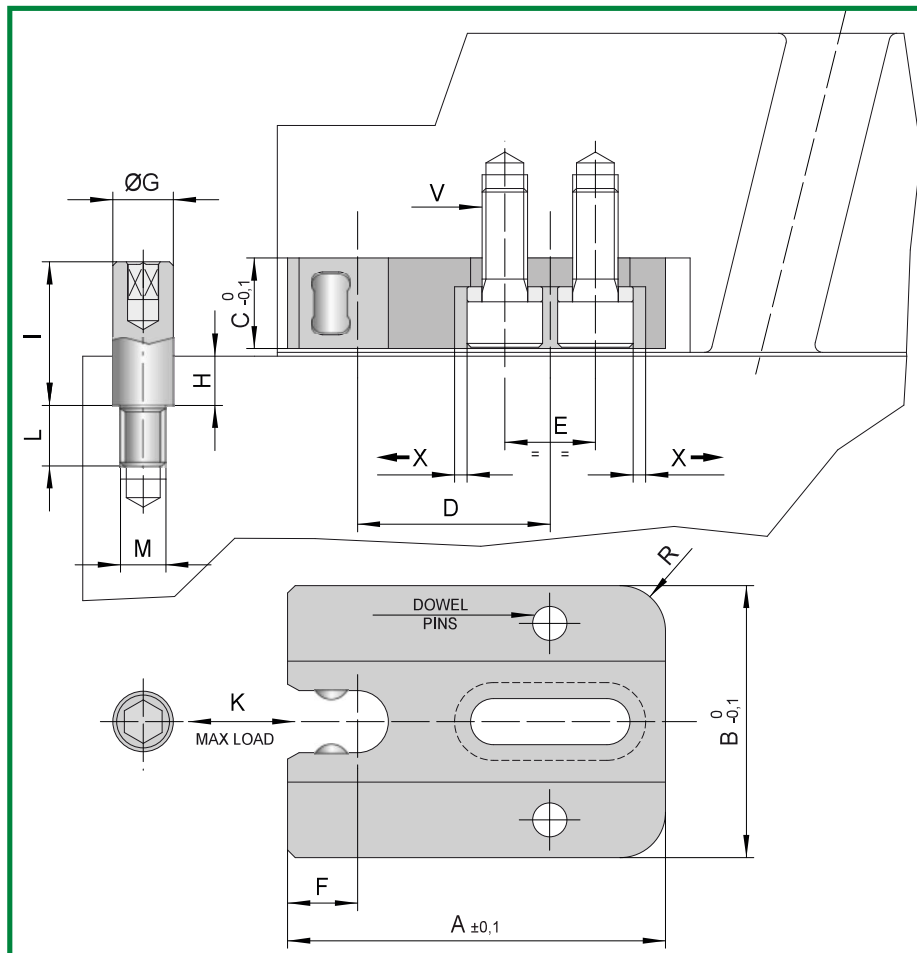
Kit includes: dowel pins Ø8x50 (2) - fixing screws M6x12 (2)
- recovery spring



CODE KIT	CODE	COMPONENTS
DS8K2	DS8L	PLATE LOCKS LEVERS DS (2)
	DS8PA	PUSH PLATE DS
	DS8PS	DOWELS HOLDING PLATE DS (2)
	DS8P	RELEASE ROD DS

Kit includes: dowel pins Ø8x50 (2) - fixing screws M6x12(2) -
fixing screws M12x25 DIN 7984 (2) - recovery springs

ADJUSTABLE SLIDE RETAINER



CODE: RCR

WAYS OF APPLICATION

Adjustable

Positioning the screws with interaxis E1, it is possible to adjust the device position according to the quote X.

In this case we recommend to apply, after the setting, at least a positioning pin, that allows to maintain the position in case of disassembly.

Fixed

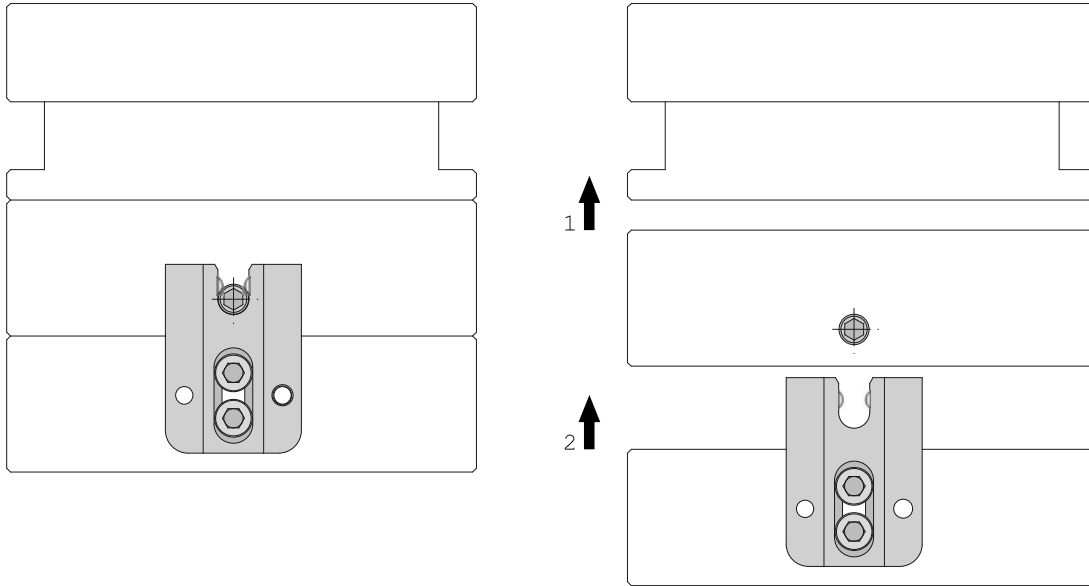
Positioning the screws with interaxis E2 the holder is fixed.

CODE	A	B	C	D	E1	E2	F	G	H	I	L	M	V	X	R	K
RCR-10	38	24	10	18,5	10	12	7,5	6	6	15	6	M5	M5x15	1	4	10Kg
RCR-20	50	36	12	25,5	12	15	9	8	8	19	8	M6	M6x15	1,5	6	20Kg
RCR-40	64	46	16	33	15	19	12	12	8	23	10	M10	M8x20	2	8	40Kg

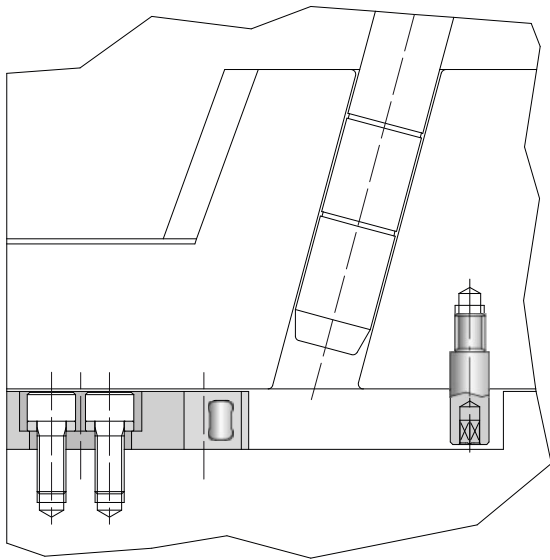
CHARACTERISTICS

- 1) POSSIBILITY OF REGULATION;
- 2) HIGH LOAD CAPACITY;
- 3) LACK OF WEAR (guaranteed by hooking by rolls);
- 4) PROTECTED HOOKING MECHANISM (no fear of dirt).

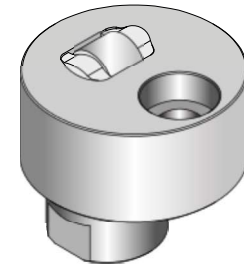
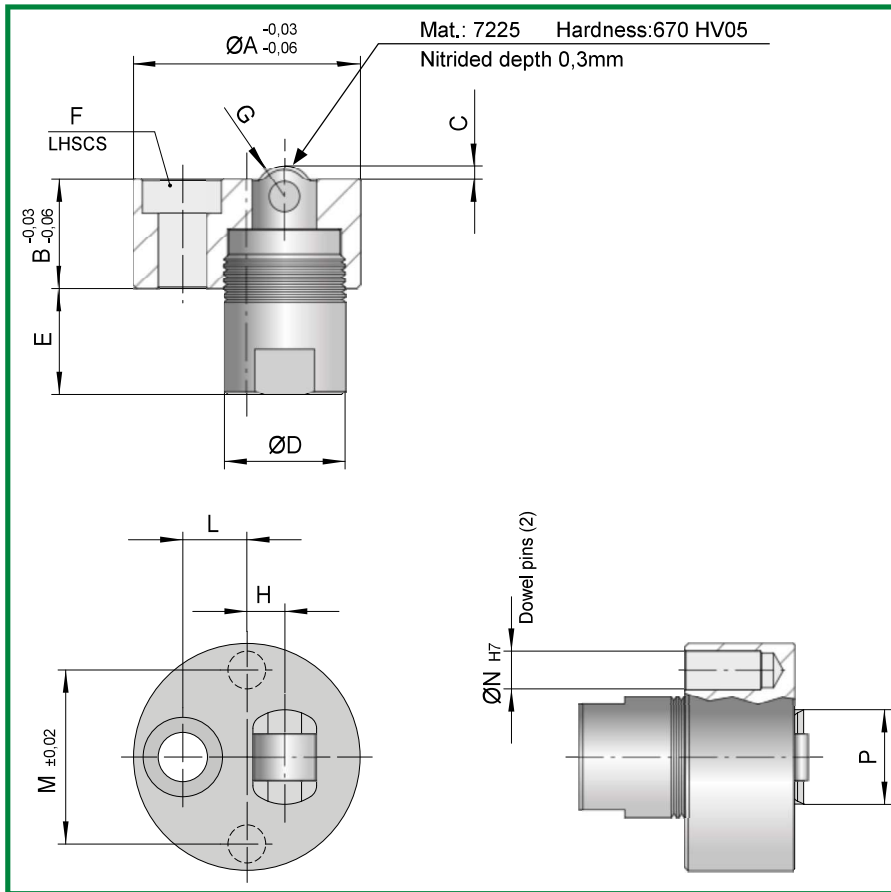
PLATES RETAINING



SLIDERS RETAINING



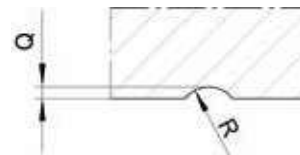
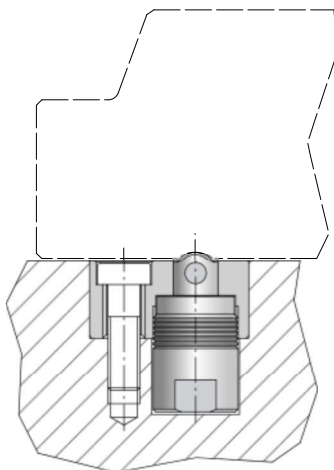
ROLLER SLIDE RETAINER



CODE: RIT..

K= MAXIMUM LOAD

CODE	A	B	C	D	E	F	G	H	L	M	N	P	K
RIT10	25	11,5	1	14	14	M5	6	3	7,5	18	4	10,5	10Kg
RIT20	30	14,5	1,5	16	14	M6	8	5	8,5	23	5	12,5	20Kg
RIT50	40	19,5	2	22	18	M8	12	7	11	30	6	18,5	50Kg

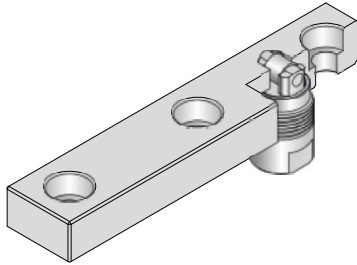


CODE	Q	R
RIT10	1	3
RIT20	1,5	4
RIT50	2	6

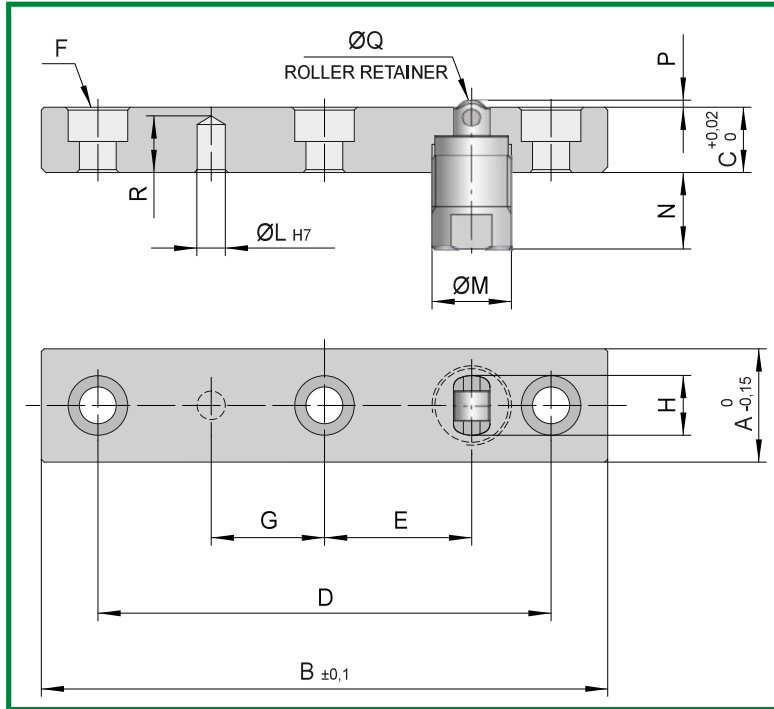
CHARACTERISTICS

- 1) LOW FRICTION BETWEEN SLIDING ELEMENTS;
- 2) HIGH LOAD CAPACITY;
- 3) SMALL ENCUMBRANCE .

SLIDING PLATE WITH INTEGRATED SLIDE RETAINER



CODE: PRI..



K= MAXIMUM LOAD

CODE	A	B	C	D	E	F	G	H	L	M	N	P	Q	R	K
PRI2060	20	60	11,5	44	8	M6 (2)	9	10,5	5	14	14	1	6	7,5	10Kg
PRI2080	20	80	11,5	60	16	M6 (2)	9	10,5	5	14	14	1	6	7,5	10Kg
PRI20100	20	100	11,5	80	26	M6 (3)	20	10,5	5	14	14	1	6	7,5	10Kg
PRI20120	20	120	11,5	100	36	M6 (3)	25	10,5	5	14	14	1	6	7,5	10Kg

CODE	A	B	C	D	E	F	G	H	L	M	N	P	Q	R	K
PRI30100	30	100	14,5	76	20	M8 (2)	10	12,5	6	16	14	1,5	8	10	20Kg
PRI30120	30	120	14,5	92	28	M8 (2)	10	12,5	6	16	14	1,5	8	10	20Kg
PRI30140	30	140	14,5	112	38	M8 (3)	28	12,5	6	16	14	1,5	8	10	20Kg
PRI30160	30	160	14,5	132	48	M8 (3)	33	12,5	6	16	14	1,5	8	10	20Kg

CODE	A	B	C	D	E	F	G	H	L	M	N	P	Q	R	K
PRI40120	40	120	19,5	88	22	M10 (2)	14	18,5	8	22	18	2	12	14	50Kg
PRI40140	40	140	19,5	104	30	M10 (2)	14	18,5	8	22	18	2	12	14	50Kg
PRI40160	40	160	19,5	124	40	M10 (3)	31	18,5	8	22	18	2	12	14	50Kg
PRI40180	40	180	19,5	144	50	M10 (3)	36	18,5	8	22	18	2	12	14	50Kg

Mat.: Carbon steel. Hardness:430 HV05

Nitrided depth 0,3mm.

N.B.: Sliding plates code

PRI 20x60 / 20x80 - PRI 30x100 / 30x120 - PRI 40x120 / 40x140 are not provided with central screw

CHARACTERISTICS

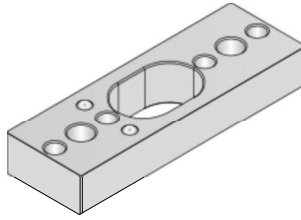
- 1) LOW FRICTION BETWEEN SLIDING ELEMENTS;
- 2) HIGH LOAD CAPACITY;
- 3) SMALL ENCUMBRANCE .

MODULAR SYSTEM FOR SLIDES WITH CYLINDRICAL GUIDES

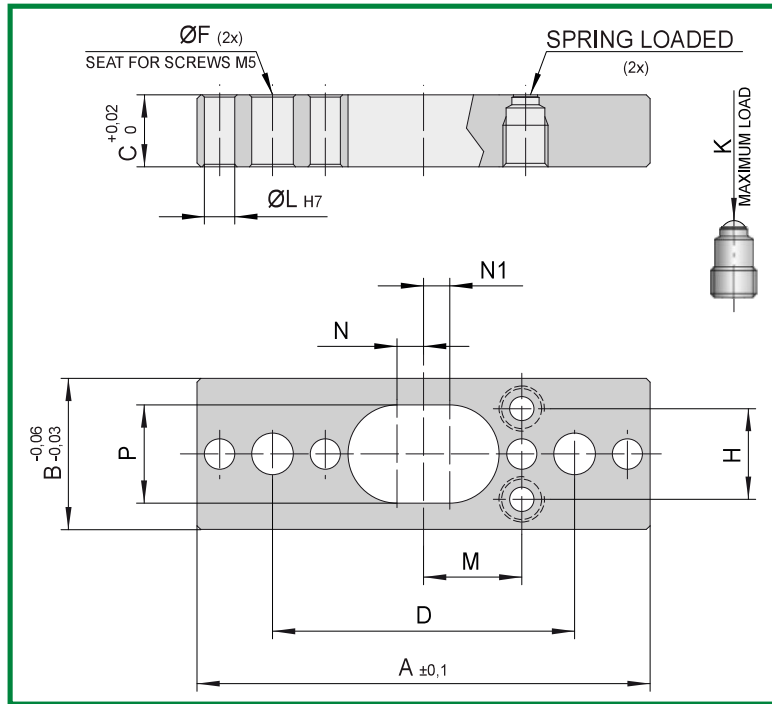


CHARACTERISTICS

1. MODULAR SYSTEM FOR ALL SIZES FROM 20 TO 220mm;
 2. MORE COMPACT DESIGN THANKS TO THE ELIMINATION OF EXTERNAL GUIDES;
 3. EXTENDED GUIDES AVAILABLE WITHOUT STROKE LIMITS;
 4. POSSIBILITY TO APPLY A SPECIAL ROUND SLIDE RETAINER TO THE CYLINDRICAL GUIDES;
 5. COUPLYNG OF THE HYDRAULIC CYLINDER TO THE CYLINDRICAL GUIDES, LEAN SOLUTION THAT AVOID BULKY FRAMES;
 6. SPRING LOADED SLIDE RETAINER DEVICE FOR THE END OF STROKE IN THE SLIDING PLATES SET 12.
- N.B.: CYLINDRICAL GUIDES AND SLIDING PLATES AVAILABLE COVERED WITH SOLID ANTIFRICTION LUBRICATING .

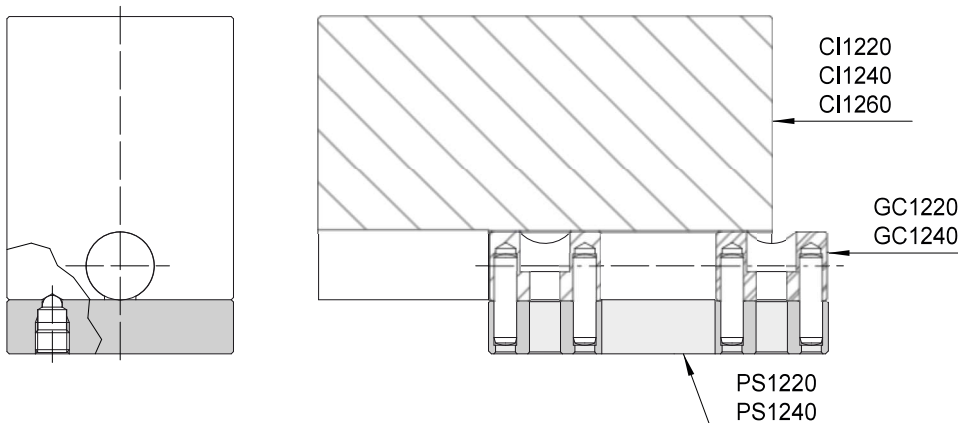


CODE: PS12..

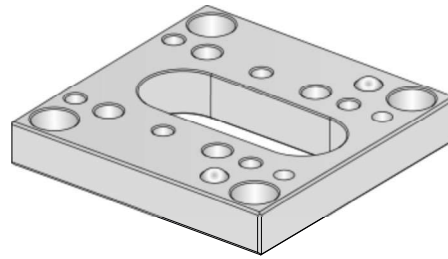


CODE	A	B	C	D	F	H	L	M	N	N1	P	K
PS1220	60	20	9,5	40	5,5	12	4	13	3,5	3,5	13	2Kg
PS1240	60	40	9,5	40	5,5	24	4	13	3,5	3,5	13	5Kg

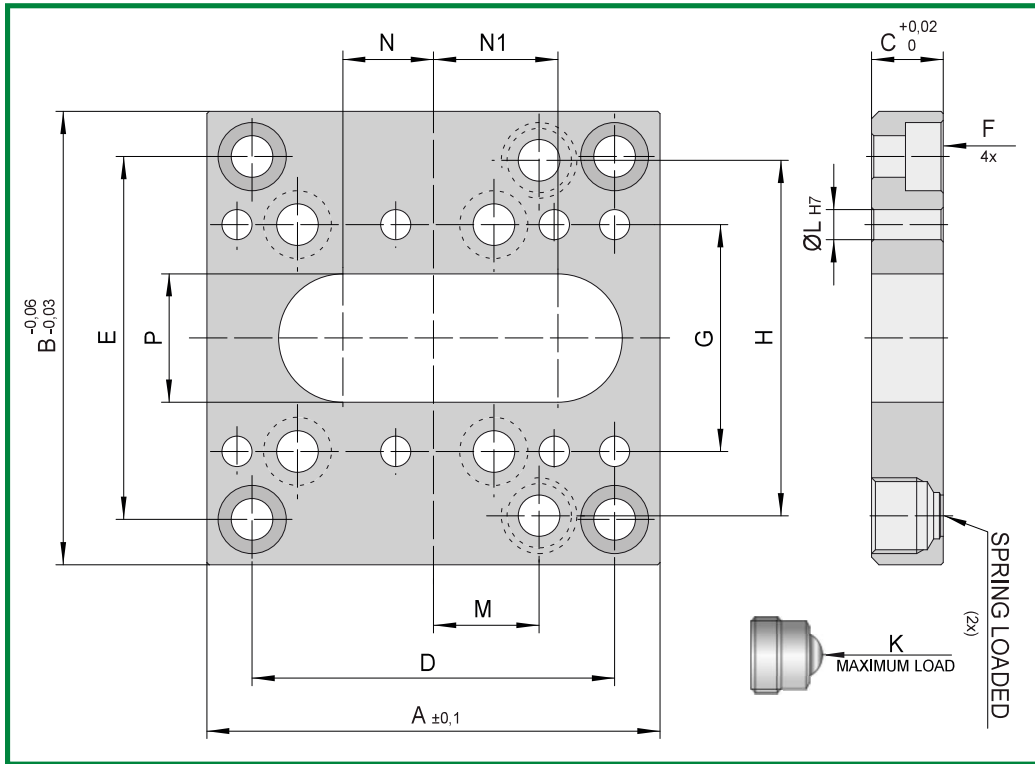
Carbon steel. Hardness:430 HV05
 Nitrided depth 0,3mm.
 Available covered with solid antifriction lubricating.



SLIDING PLATE SET 12

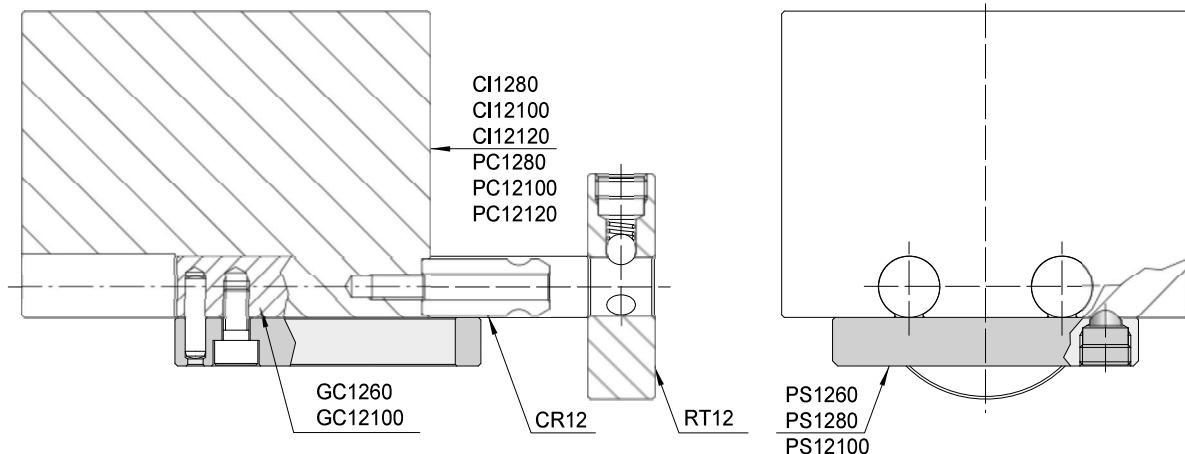


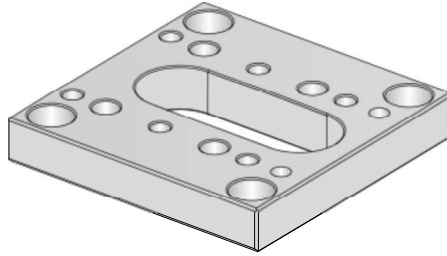
CODE: PS12..



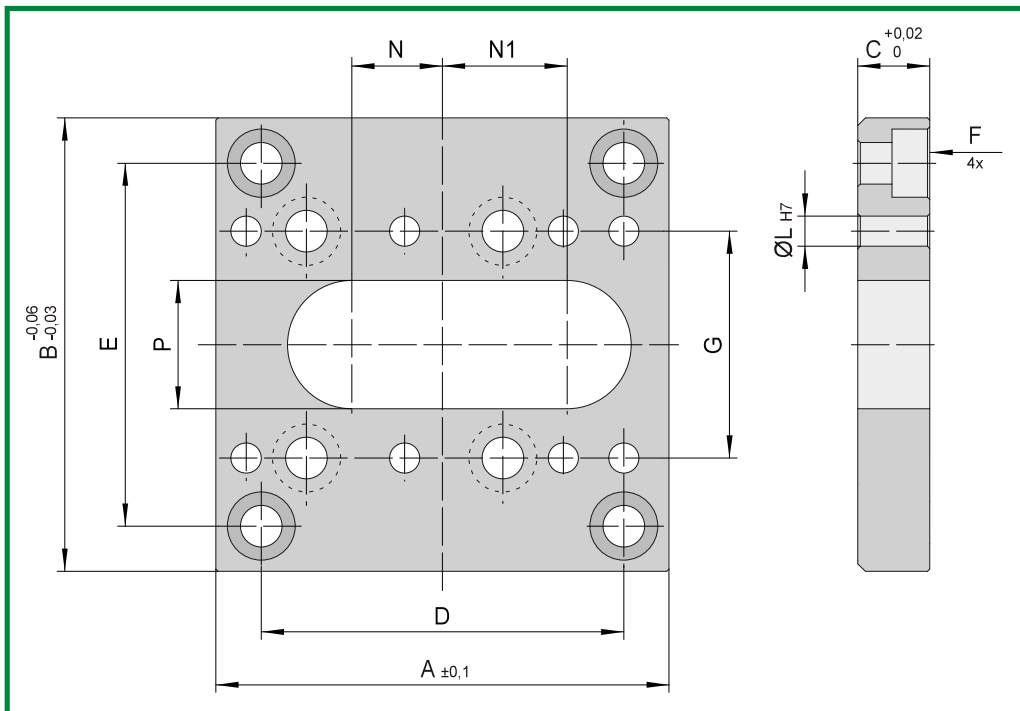
CODE	A	B	C	D	E	F	G	H	L	M	N	N1	P	K
PS1260	60	60	9,5	48	48	M5	30	47	4	14	12	16,5	17	2Kg
PS1280	60	80	9,5	48	68	M5	30	52	4	14	12	16,5	17	5Kg
PS12100	60	100	9,5	48	80	M5	30	60	4	14	12	16,5	17	5Kg

Mat.: Carbon steel. Hardness:430 HV05
 Nitrided depth 0,3mm.
 Available covered with solid antifriction lubricating.





CODE: PS20..

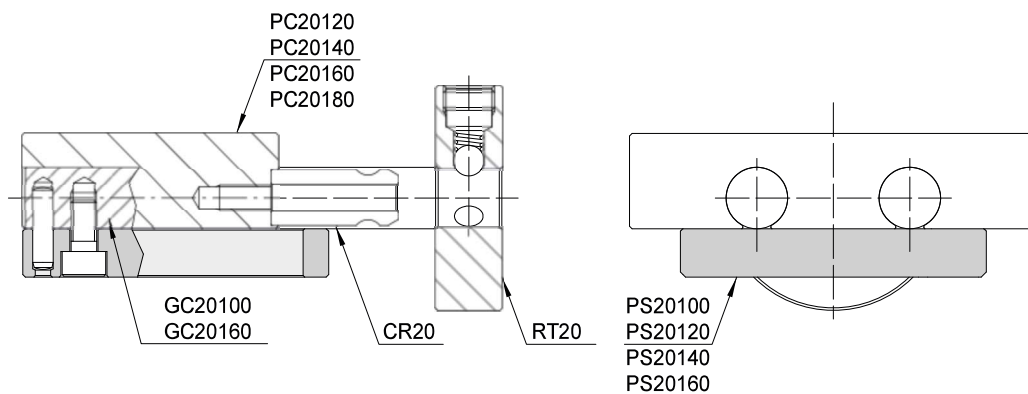


CODE	A	B	C	D	E	F	G	L	N	N1	P
PS20100	100	100	11,5	80	82	M8	48	8	23,5	27	27
PS20120	100	120	11,5	80	90	M8	48	8	23,5	27	27
PS20140	100	140	11,5	80	100	M8	48	8	23,5	27	27
PS20160	100	160	11,5	80	110	M8	48	8	23,5	27	27

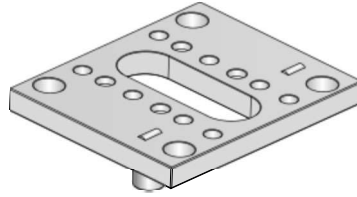
Mat.: Carbon steel. Hardness:430 HV05

Nitrided depth 0,3mm.

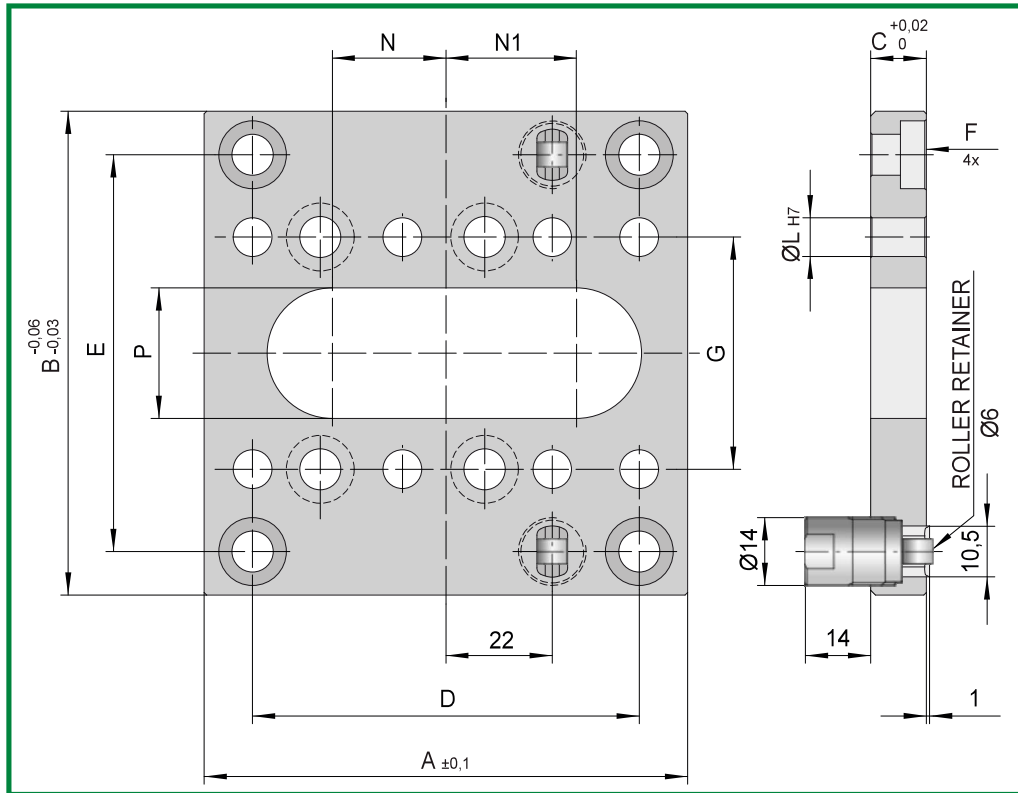
Available covered with solid antifriction lubricating.



SLIDING PATE SET 20 WITH ROLLER SLIDE RETAINER

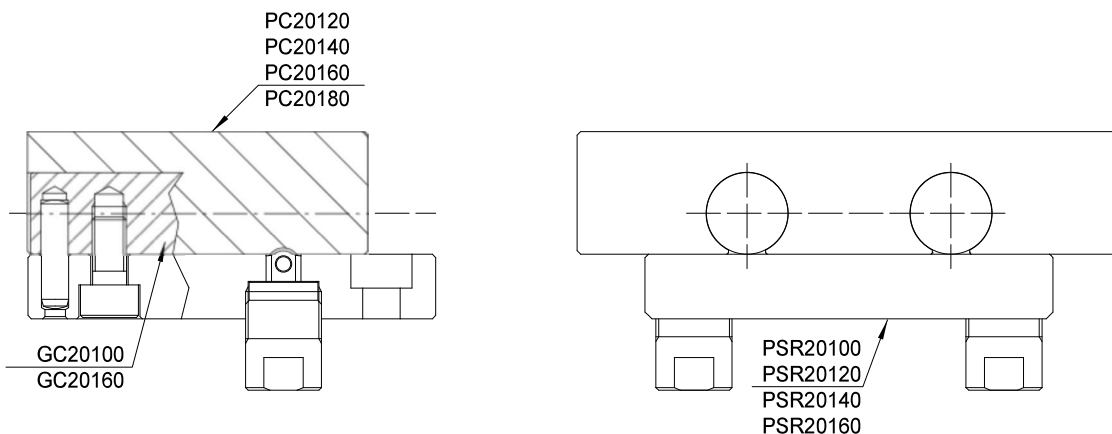


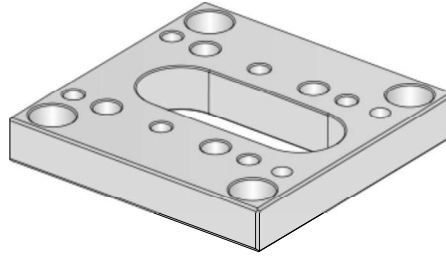
CODE: PSR20..



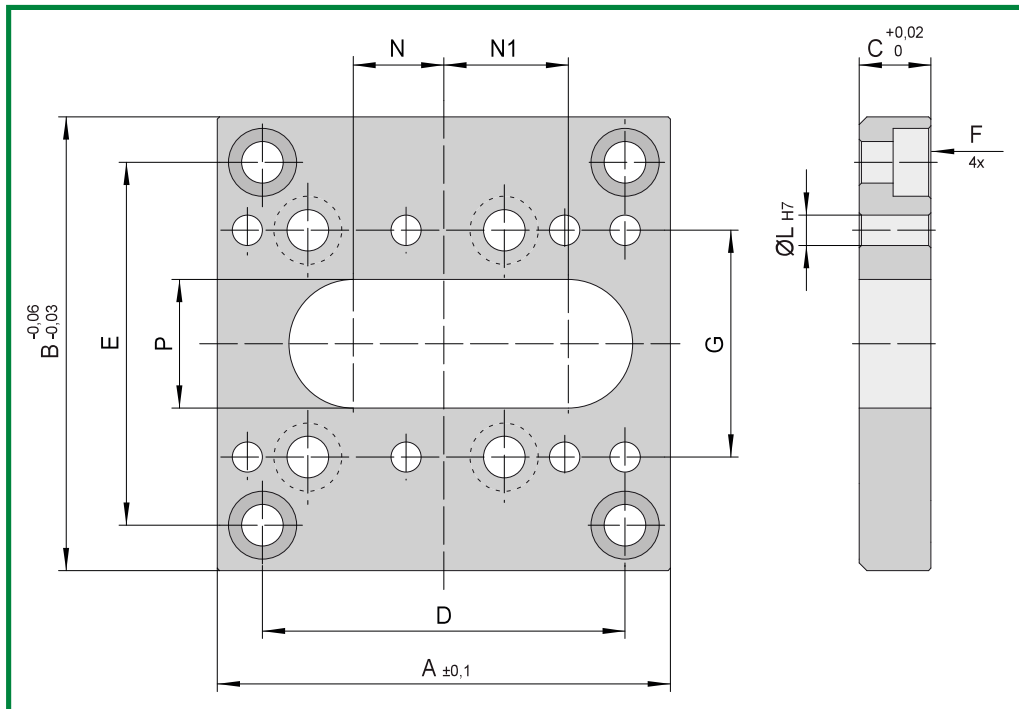
CODE	A	B	C	D	E	F	G	L	N	N1	P
PSR20100	100	100	11,5	80	82	M8	48	8	23,5	27	27
PSR20120	100	120	11,5	80	90	M8	48	8	23,5	27	27
PSR20140	100	140	11,5	80	100	M8	48	8	23,5	27	27
PSR20160	100	160	11,5	80	110	M8	48	8	23,5	27	27

Maximum load 20 Kg.
 Carbon steel. Hardness:430 HV05
 Nitrided depth 0,3mm.
 Available covered with solid antifriction lubricating.



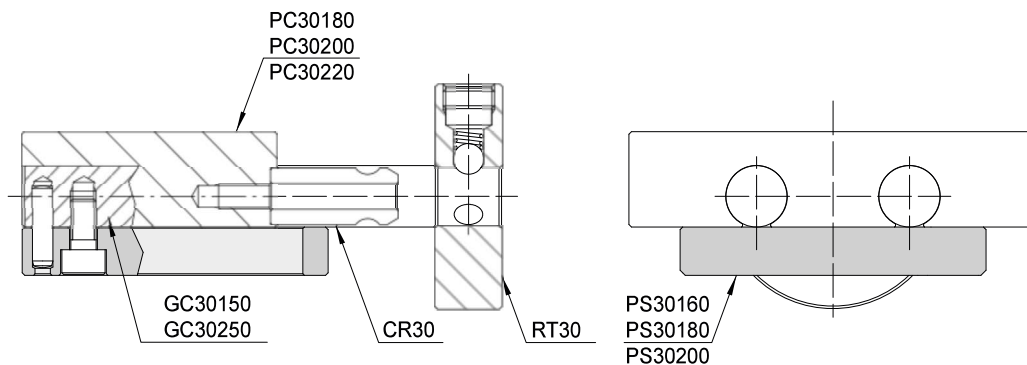


CODE: PS30..

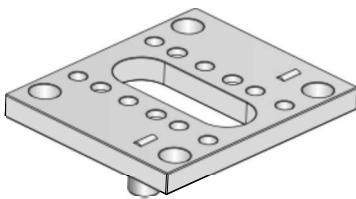


CODE	A	B	C	D	E	F	G	L	N	N1	P
PS30160	150	160	14,5	120	120	M10	64	10	45	49	34
PS30180	150	180	14,5	120	120	M10	64	10	45	49	34
PS30200	150	200	14,5	120	140	M10	64	10	45	49	34

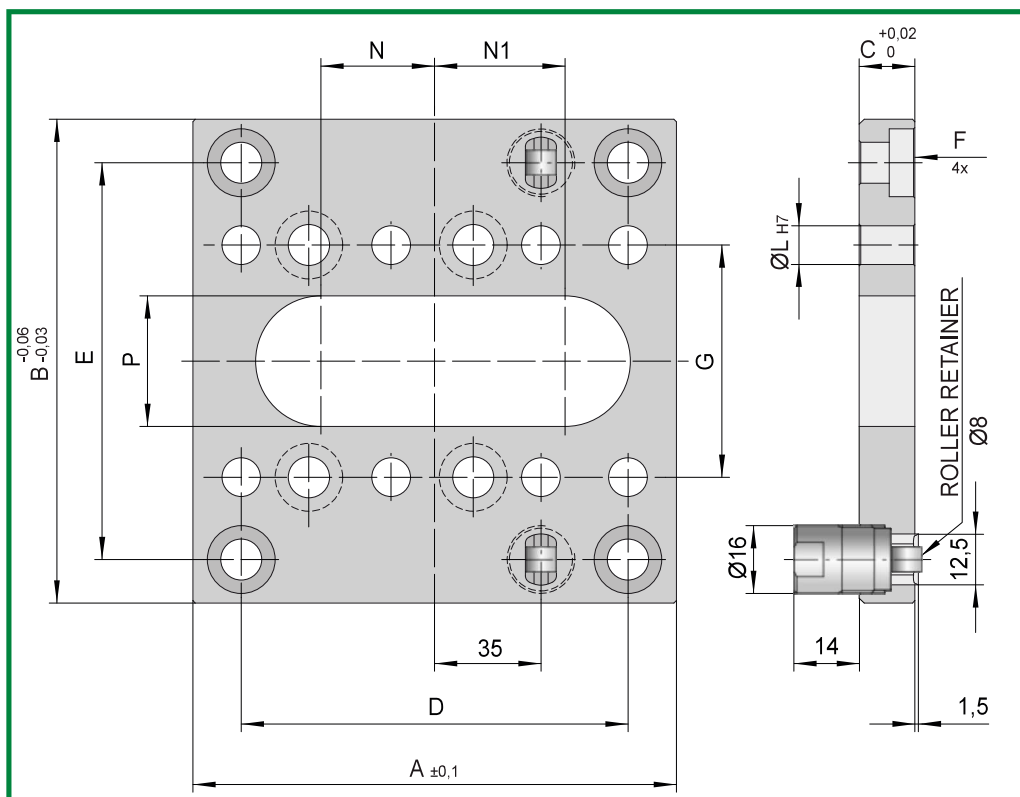
Mat.: Carbon steel. Hardness:430 HV05
 Nitrided depth 0,3mm.
 Available covered with solid antifriction lubricating.



SLIDING PATE SET 30 WITH ROLLER SLIDE RETAINER



CODE: PSR30..



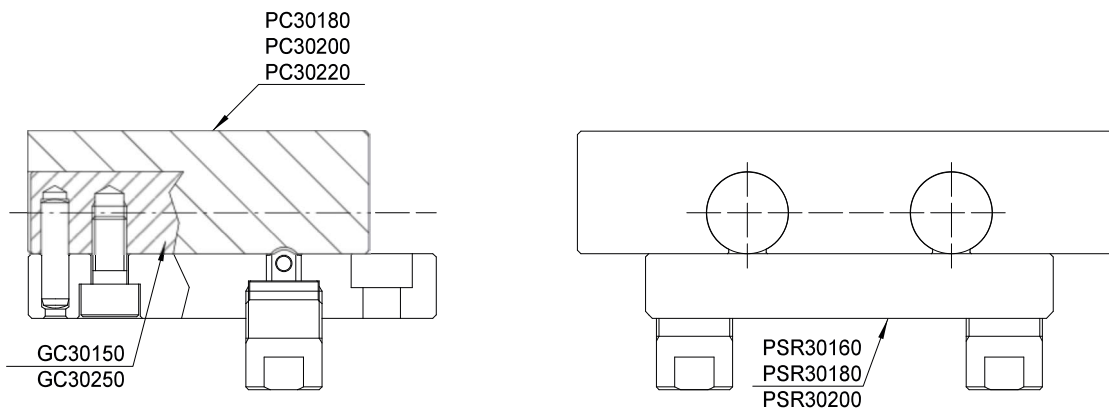
CODE	A	B	C	D	E	F	G	L	N	N1	P
PSR30160	150	160	14,5	120	120	M10	64	10	45	49	34
PSR30180	150	180	14,5	120	120	M10	64	10	45	49	34
PSR30200	150	200	14,5	120	140	M10	64	10	45	49	34

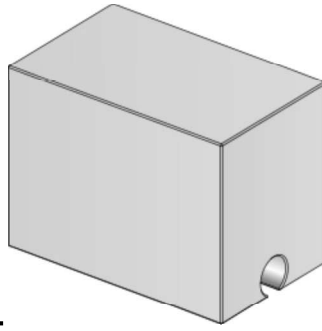
Maximum load 40 Kg.

Carbon steel. Hardness:430 HV05

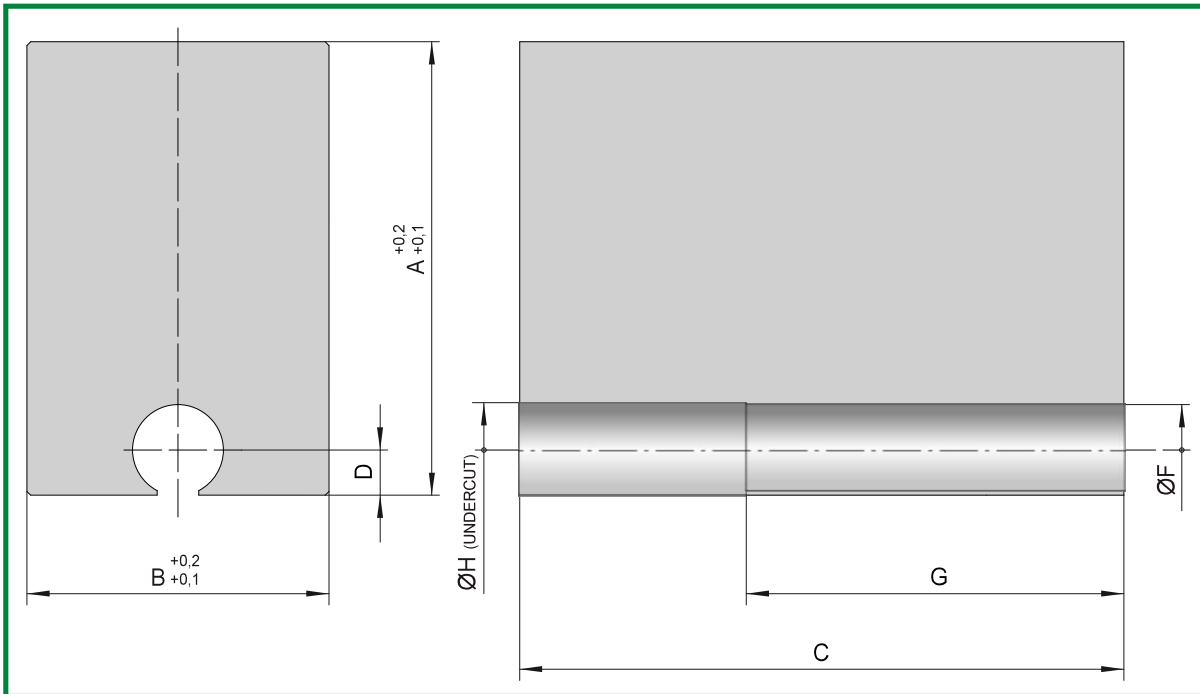
Nitrided depth 0,3mm.

Available covered with solid antifriction lubricating.





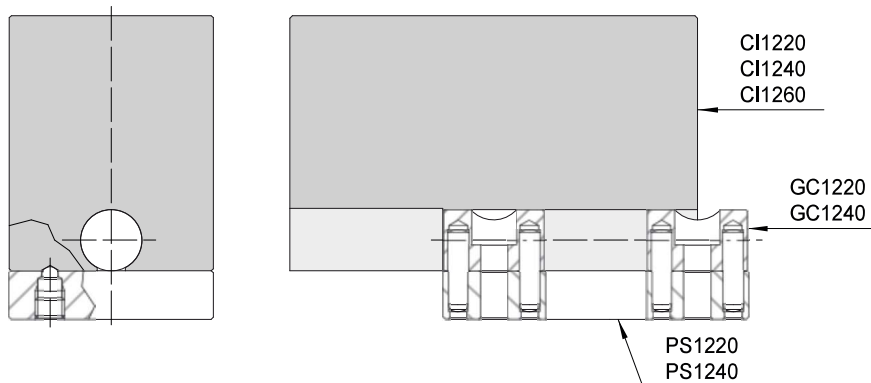
CODE: CI12..

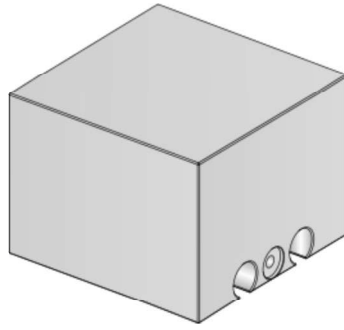


CODE	A	B	C	D	F	G	H
CI1220	60	20	80	6	12	50	12,5
CI1240	60	40	80	6	12	50	12,5
CI1260	60	60	80	6	12	50	12,5

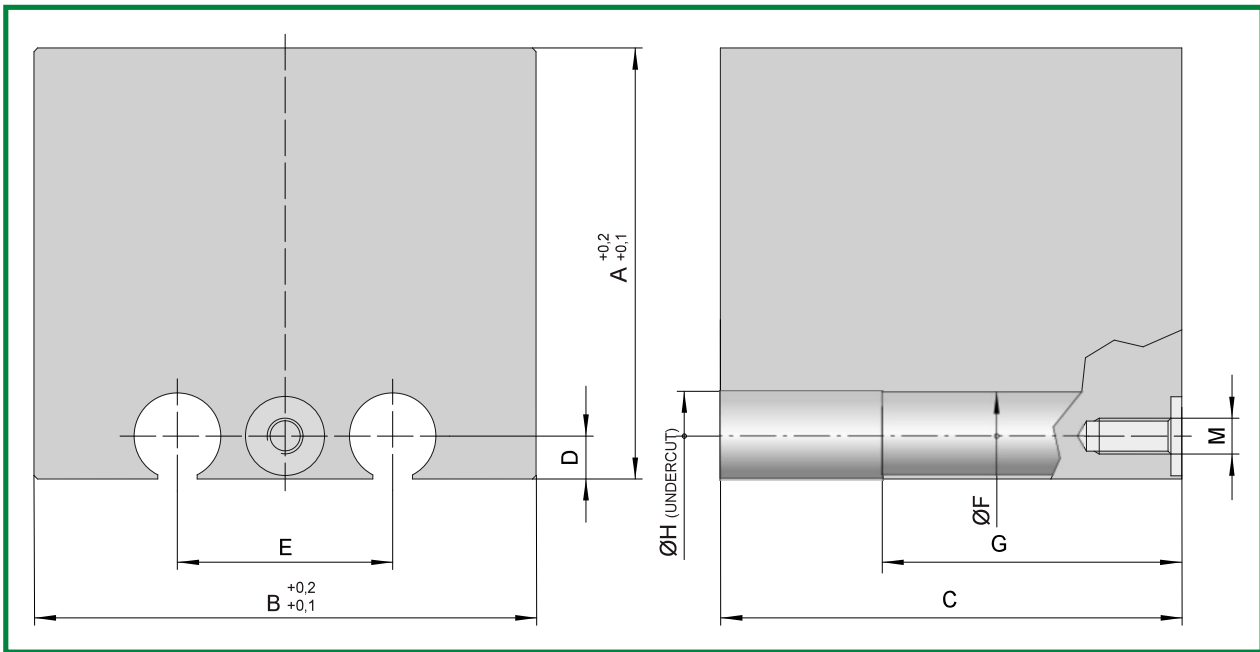
Mat.: 2311

Hardness: 1000±1100 N/mm² (33 HRC)





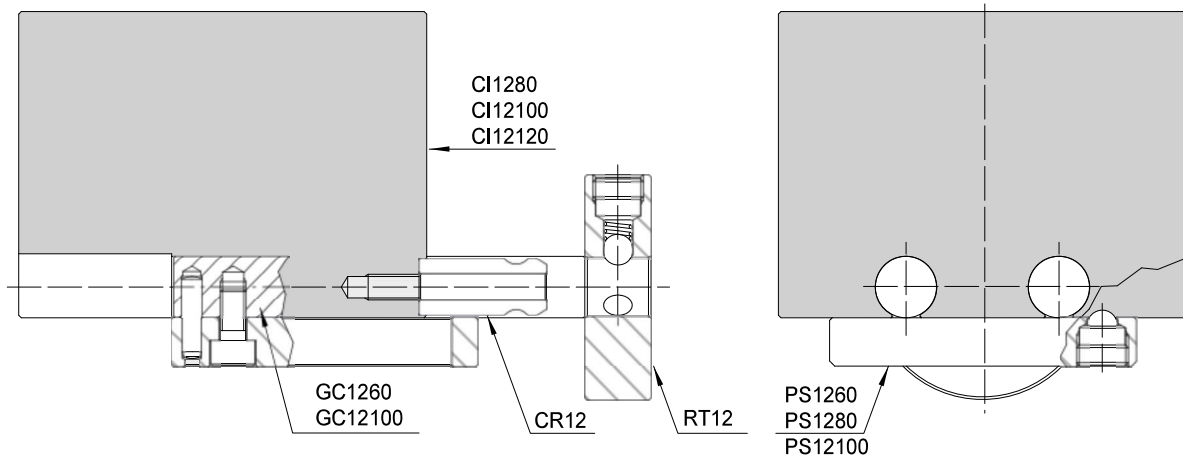
CODE: CI12..

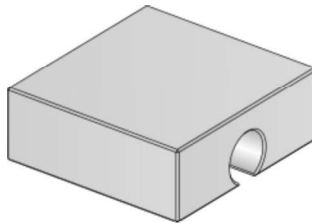


CODE	A	B	C	D	E	F	G	H	M
CI1280	60	80	80	6	30	12	50	12,5	M5
CI12100	60	100	80	6	30	12	50	12,5	M5
CI12120	60	120	80	6	30	12	50	12,5	M5

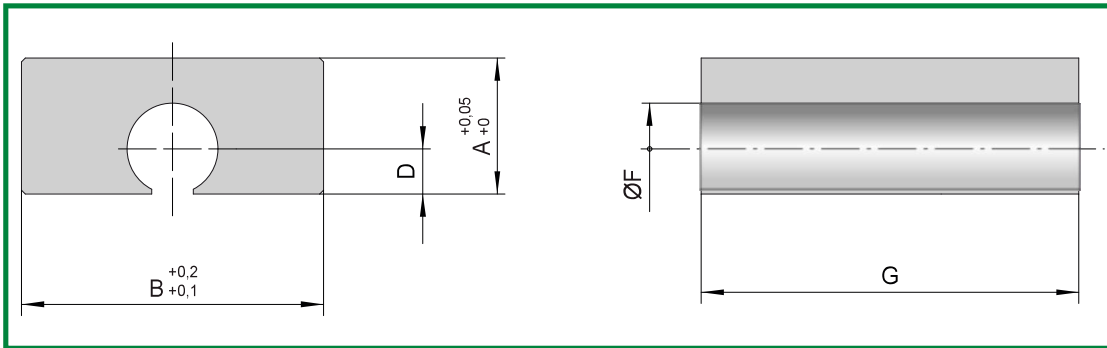
Mat.: 2311

Hardness: 1000÷1100 N/mm² (33 HRC)





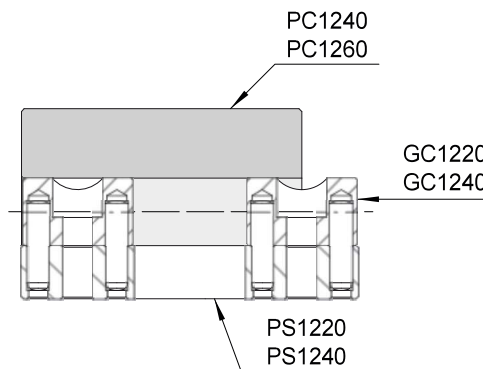
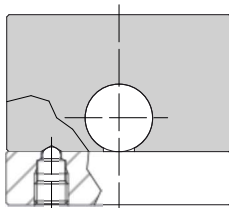
CODE: PC12..



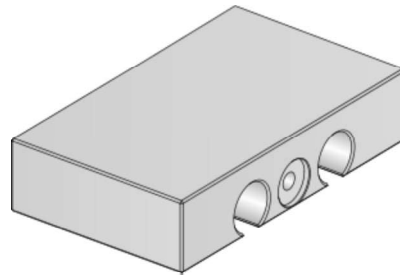
CODE	A	B	D	F	G
PC1240	18	40	6	12	48
PC1260	18	60	6	12	48

Mat.: 2311

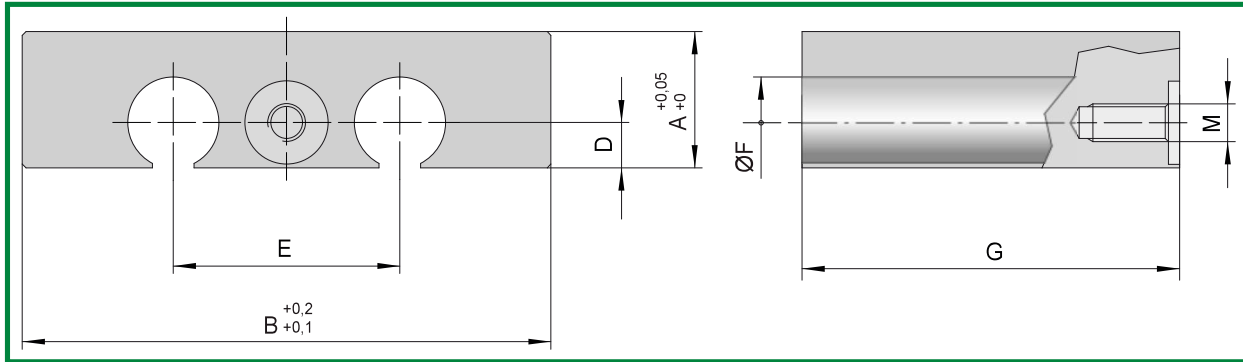
Hardness: 1000±1100 N/mm² (33 HRC)



SLIDE BEARING SET 12



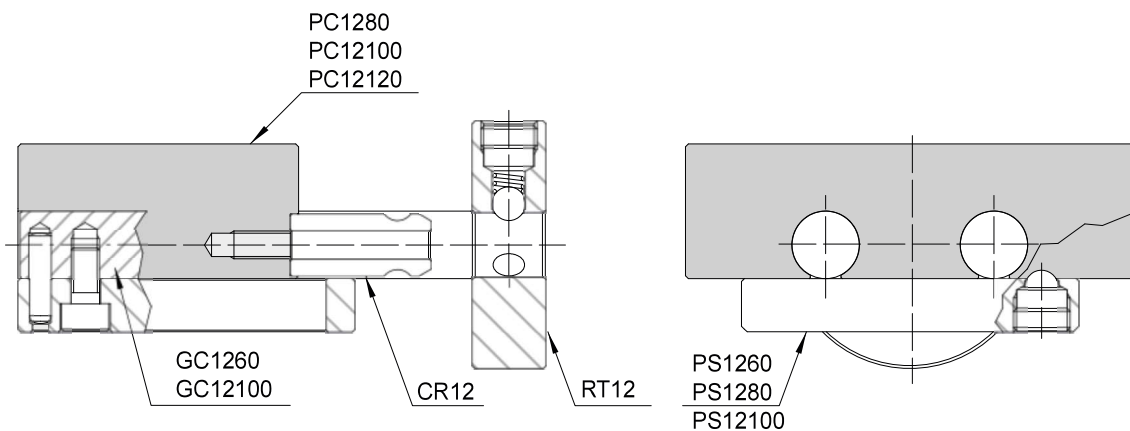
CODE: PC12..

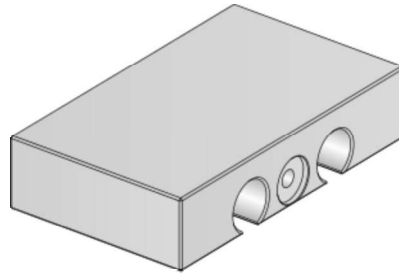


CODE	A	B	D	E	F	G	M
PC1280	18	80	6	30	12	48	M5
PC12100	18	100	6	30	12	48	M5
PC12120	18	120	6	30	12	48	M5

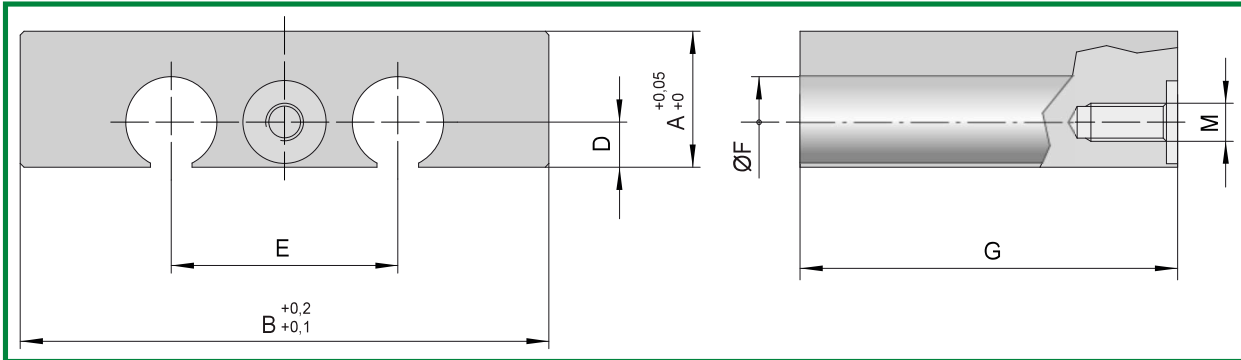
Mat.: 2311

Hardness: 1000÷1100 N/mm² (33 HRC)





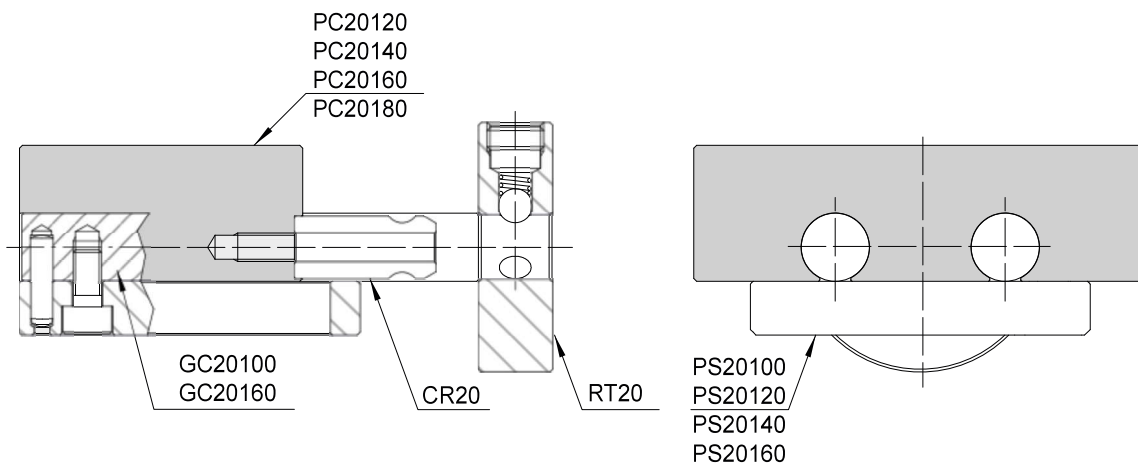
CODE: PC20..



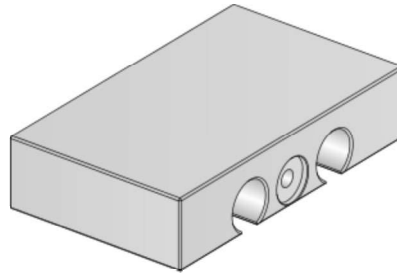
CODE	A	B	D	E	F	G	M
PC20120	28	120	10	48	20	78	M8
PC20140	28	140	10	48	20	78	M8
PC20160	28	160	10	48	20	78	M8
PC20180	28	180	10	48	20	78	M8

Mat.: 2311

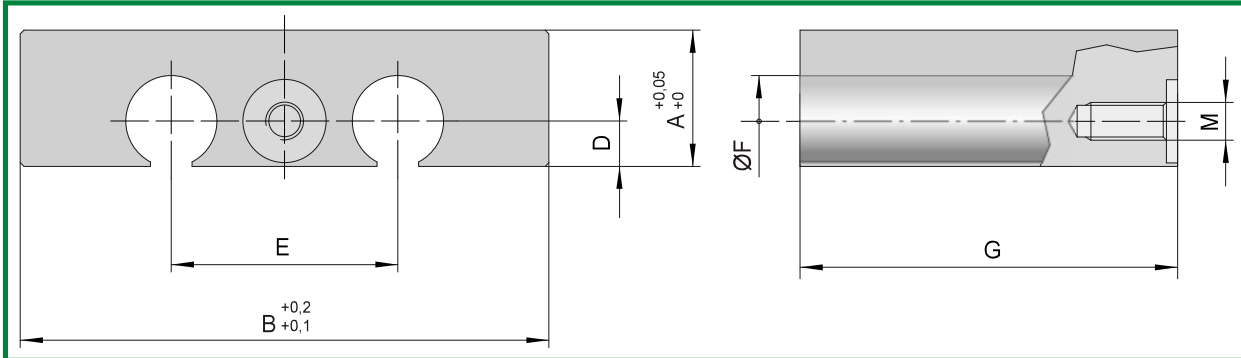
Hardness: 1000÷1100 N/mm² (33 HRC)



SLIDE BEARING SET 30



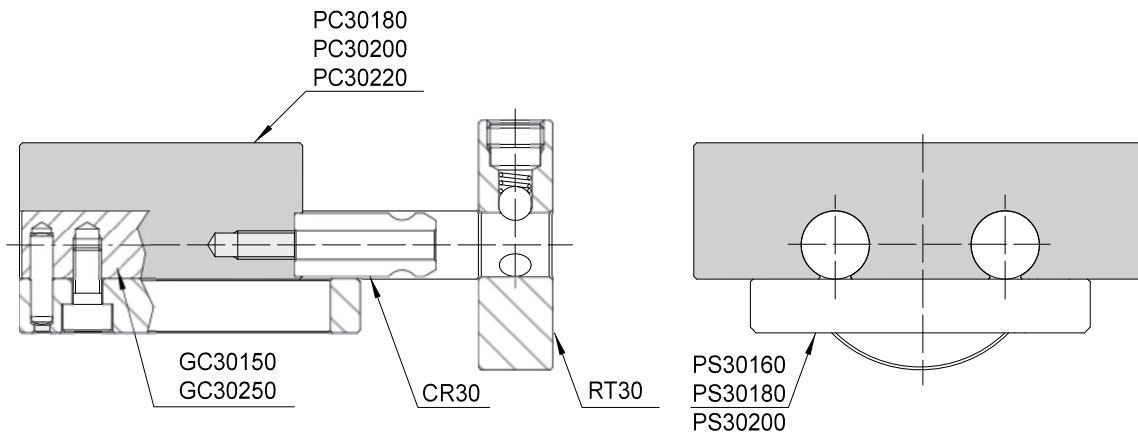
CODE: PC30..

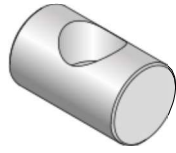


CODE	A	B	D	E	F	G	M
PC30180	48	180	15	64	30	118	M10
PC30200	48	200	15	64	30	118	M10
PC30220	48	220	15	64	30	118	M10

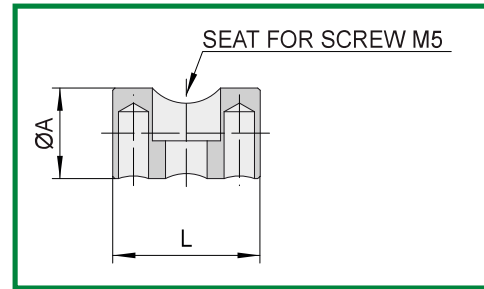
Mat.: 2311

Hardness: 1000÷1100 N/mm² (33 HRC)



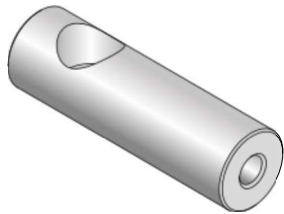


CODE: GC1220

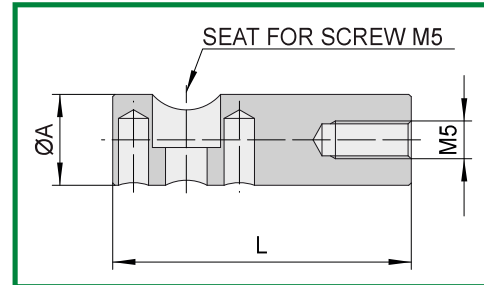


CODE	A	L
GC1220	12	20

Mat.: 7225. Hardness:670 HV05
Nitrided depth 0,3mm.
Available covered with solid antifriction lubricating.



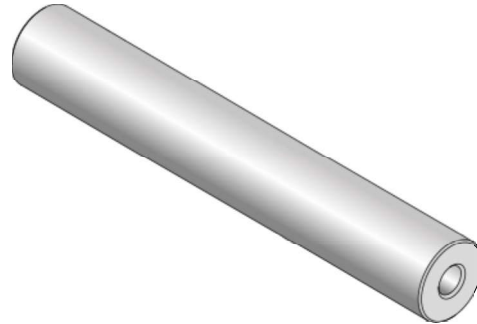
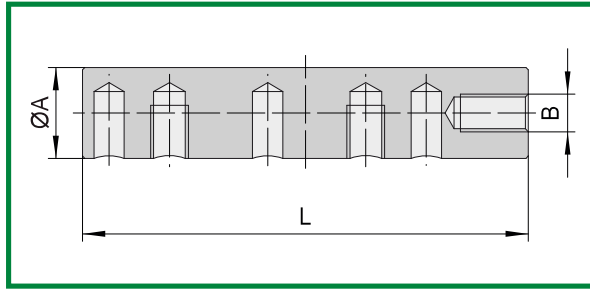
CODE: GC1240



CODE	A	L
GC1240	12	40

Mat.: 7225. Hardness:670 HV05
Nitrided depth 0,3mm.
Available covered with solid antifriction lubricating.

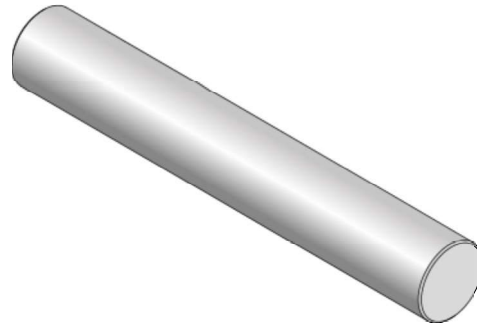
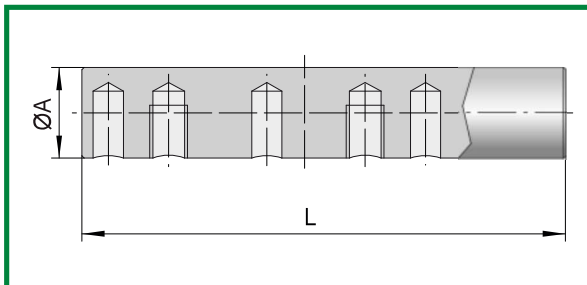
CYLINDRICAL GUIDES SET 12-20-30



CODE: GC..

CODE	A	B	L
GC1260	12	M5	60
GC20100	20	M8	100
GC30150	30	M10	150

Mat.: 7225. Hardness:670 HV05
Nitrided depth 0,3mm.
Available covered with solid antifriction lubricating.
Upon request special lengths available.

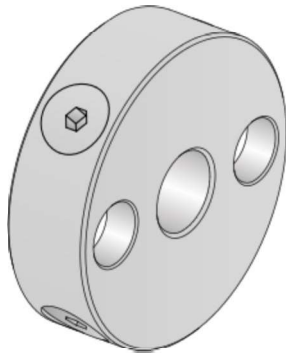


CODE: GC..

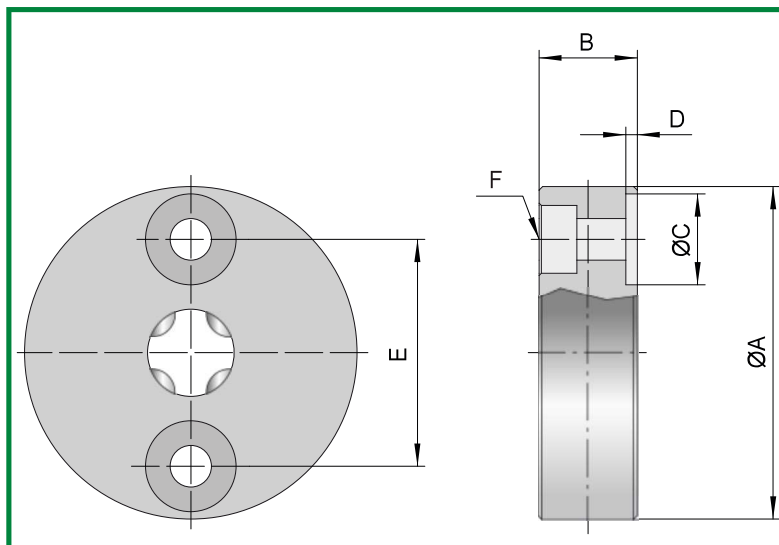
CODE	A	L
GC12100	12	100
GC20160	20	160
GC30250	30	250

Mat.: 7225. Hardness:670 HV05
Nitrided depth 0,3mm.
Available covered with solid antifriction lubricating.
Upon request special lengths available.

ROUND SLIDE RETAINER SET 12-20-30



CODE: RT..



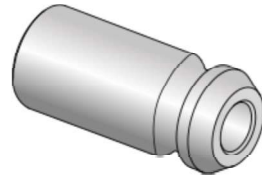
CODE	A	B	C	D	E	F	LOAD
RT12	44	13	12	1,5	30	M5	10 Kg
RT20	74	18	20	2	48	M8	20 Kg
RT30	98	20	30	2,5	64	M10	40 Kg

Mat.: 7225

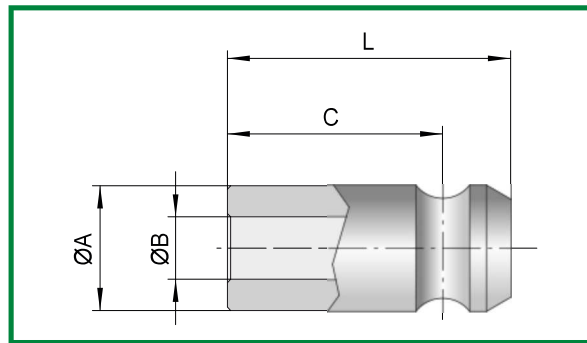
Hardness: 800 N/mm² (21,7 HRC)

Nitrided depth 0,1mm.

TANG FOR SLIDE RETAINER SET 12-20-30



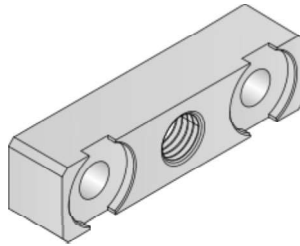
CODE: CR..



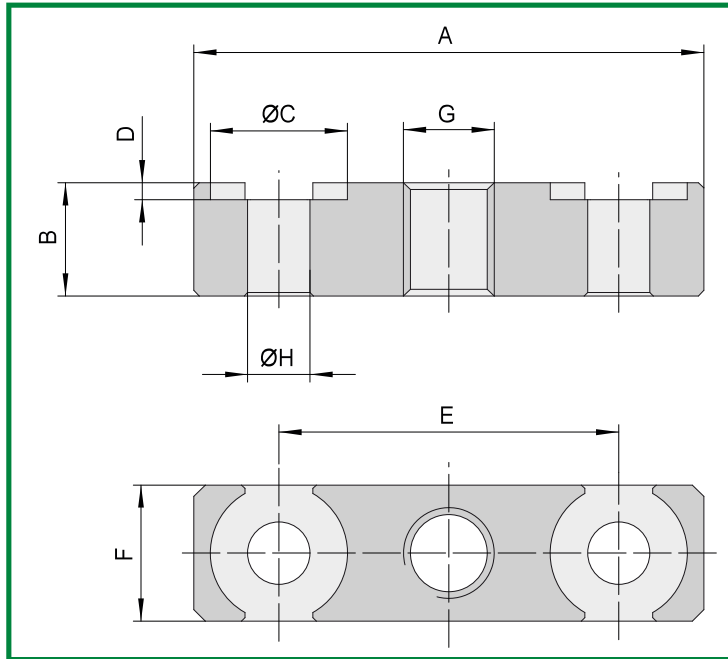
CODE	A	B	C	L
CR12	11	5,5	19	25
CR20	17	8,5	32	42
CR30	24	10,5	49,5	62,5

Mat.: 7225
Hardness: 670 HV05
Nitrided depth 0,3mm.

FLANGE FOR SLIDE DOCKING SET 12-20-30



CODE: PBC



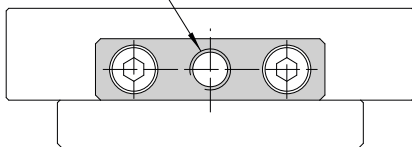
CODE	A	B	C	D	E	F	G	H
PBC12	45	10	12	1,5	30	12	M8	5,5
PBC20	75	15	20	2	48	20	M10	8,5
PBC30	100	20	30	2,5	64	30	M12	10,5

Mat.: 1191

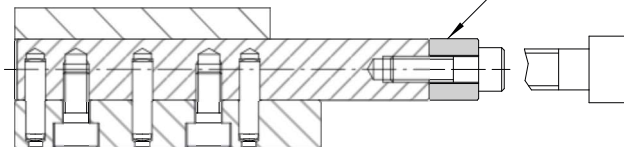
Hardness: 750 N/mm² (220 HB)

Nitrided depth 0,1mm.

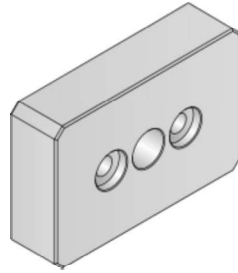
SEAT FOR BLOCKING
SCREW



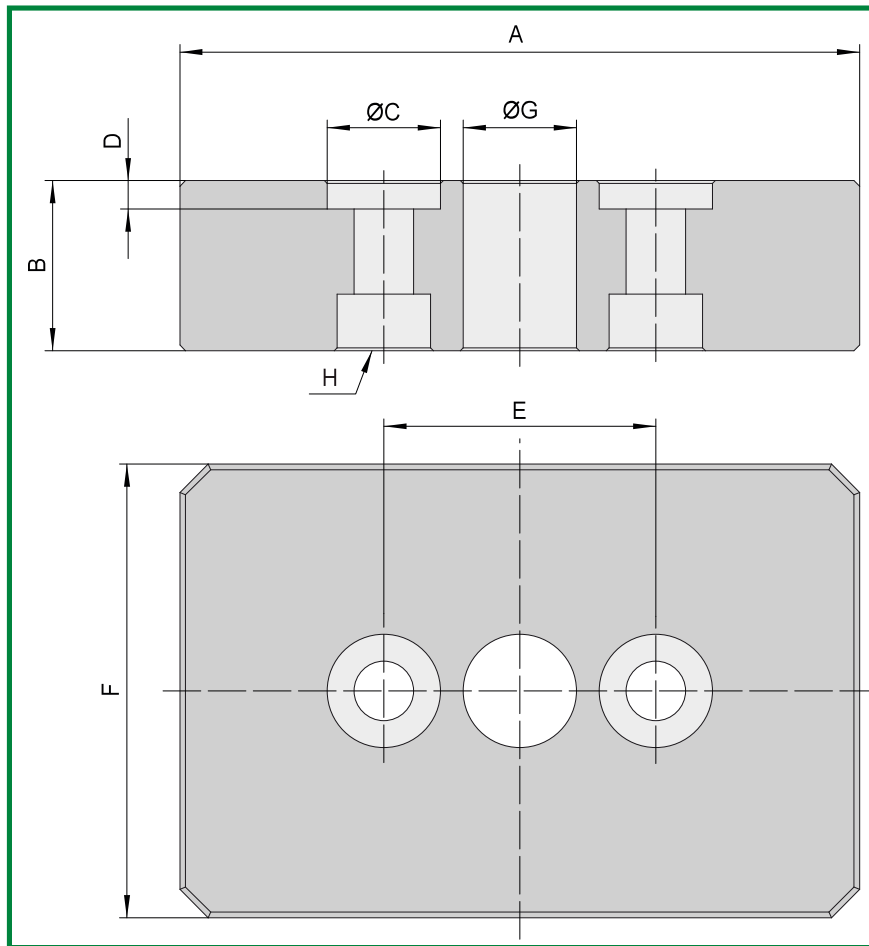
PBC12
PBC20
PBC30



BEARING FLANGE FOR CYLINDER SET 20-30



CODE: FS..

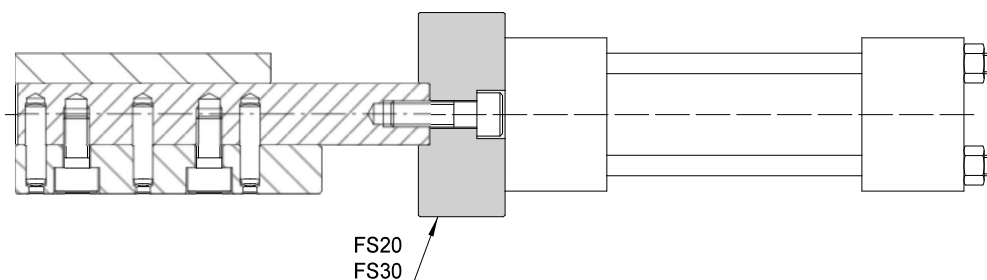


CODE	A	B	C	D	E	F	G	H
FS20	120	30	20	5	48	80	20	M10
FS30	150	40	30	6	64	90	20	M12

Mat.: 1191

Hardness: 750 N/mm² (220 HB)

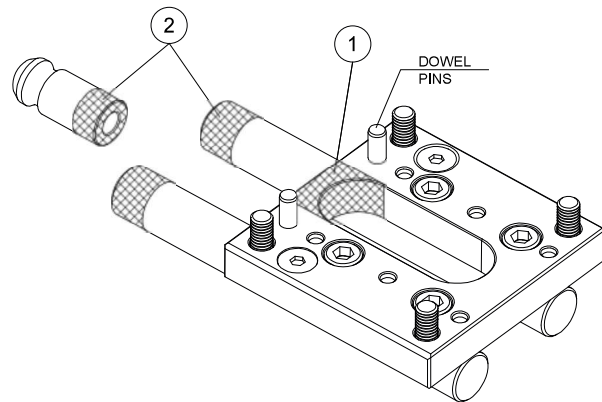
Nitrided depth 0,1mm.



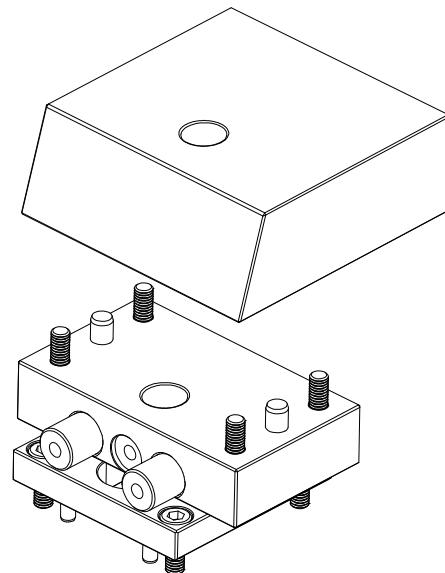
1) If necessary it is possible to modify the slot of the sliding plate PS.. (figure point 1).

N.B.: in this case it is important to make use of the dowel pins to keep the geometry of the item and to guarantee the right working of the slide.

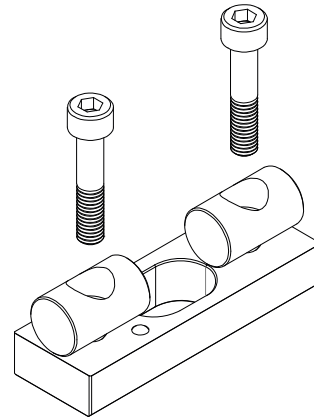
2) The extended cylindrical guides and the tang for slide retainer can be easily shortened as needed (figure point 2).



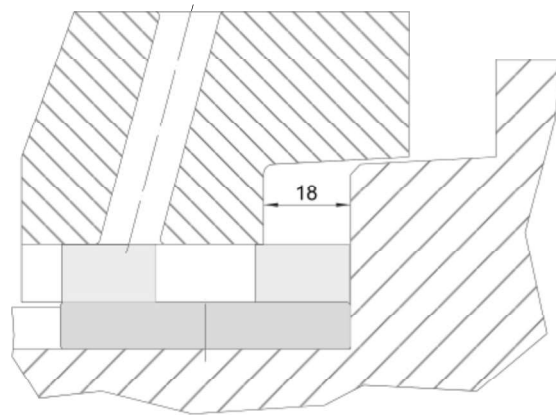
The slide bearing PC.. works as a support for the moulding part.



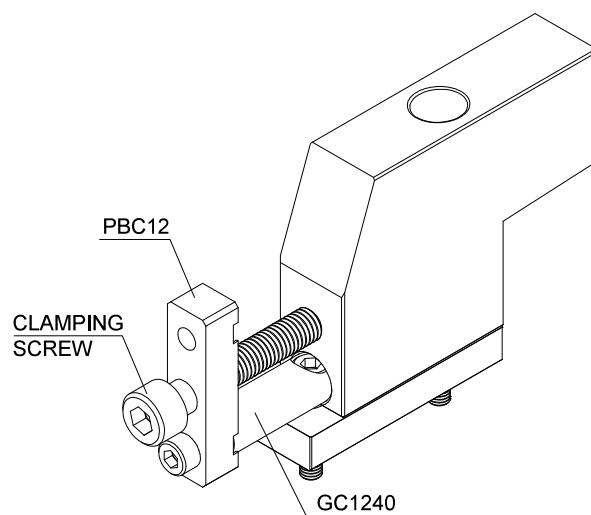
1) The slides with the single guide are fixed on the mouldbase as shown in figure.

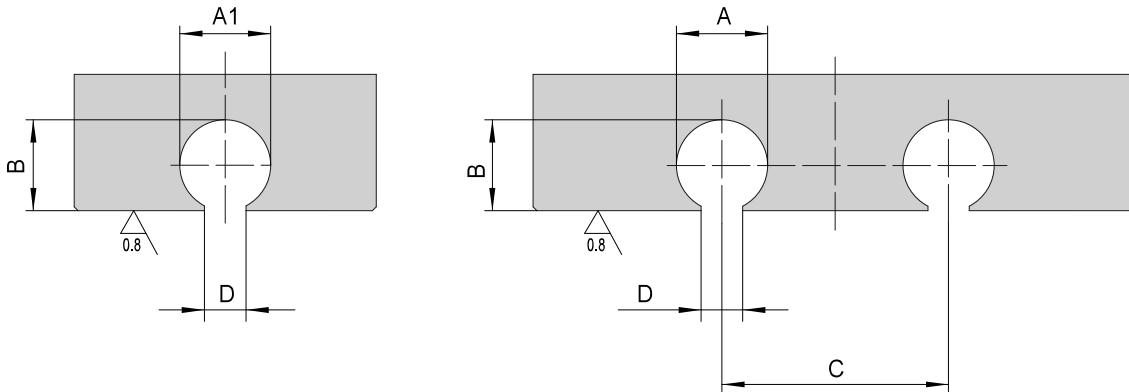


2) It is advisable to apply this slide for a maximum stroke of 18mm.



3) The range for slide docking PBC12 can also be used to dock the slide with the single guide.
N.B.: for such use it is necessary to temporarily apply the extended cylindrical guide GC1240.





CODE	A	A1	B	C	D
12	12,08 $\begin{smallmatrix} +0,02 \\ 0 \end{smallmatrix}$	12,04 $\begin{smallmatrix} +0,02 \\ 0 \end{smallmatrix}$	12 $\begin{smallmatrix} +0,04 \\ +0,02 \end{smallmatrix}$	30	5,5 \pm 0,1
20	20,10 $\begin{smallmatrix} +0,05 \\ 0 \end{smallmatrix}$		20 $\begin{smallmatrix} +0,04 \\ +0,02 \end{smallmatrix}$	48	8,5 \pm 0,1
30	30,15 $\begin{smallmatrix} +0,05 \\ 0 \end{smallmatrix}$		30 $\begin{smallmatrix} +0,04 \\ +0,02 \end{smallmatrix}$	64	10,5 \pm 0,1