



Accessories

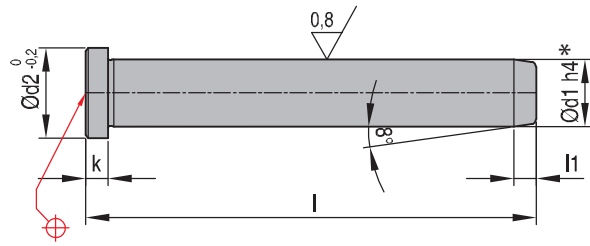




GB 112

Guide pillars

Mat.: 1.7131 -720 HV 30

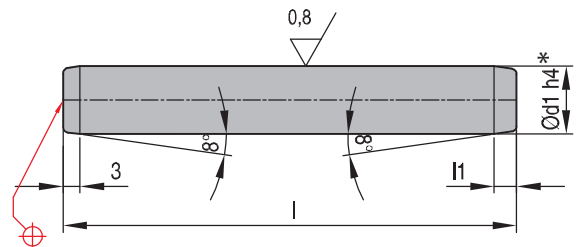


REF d1 x l	d2	l1	
GB 112 12x80	16	4	4
GB 112 12x100	16	4	4
GB 112 12x120	16	4	4
GB 112 18x120	22	7	6
GB 112 18x140	22	7	6
GB 112 18x160	22	7	6
GB 112 24x120	28	7	6
GB 112 24x160	28	7	6
GB 112 24x200	28	7	6
GB 112 30x160	36	7	6
GB 112 30x200	36	7	6
GB 112 30x240	36	7	6

GB 113

Guide pillars

Mat.: 1.7131 -720 HV 30



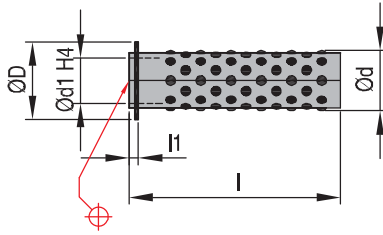
REF d1 x l	l1
GB 113 12x100	4
GB 113 12x125	4
GB 113 18x100	7
GB 113 18x125	7
GB 113 18x160	7
GB 113 24x120	7
GB 113 24x160	7
GB 113 24x200	7
GB 113 30x160	7
GB 113 30x240	7



Ball cages

Mat.: Brass Balls: Steel-hardened as per DIN 5401

FW 12

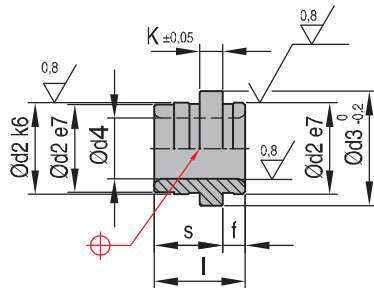


REF d1 x l	l1	d	D	d1	l
FW 12 12x40	2,5	16	20,5	12	40
FW 12 12x56	2,5	16	20,5	12	56
FW 12 18x45	2,8	24	28,6	18	45
FW 12 18x56	2,8	24	28,6	18	56
FW 12 18x71	2,8	24	28,6	18	71
FW 12 24x45	3,6	30	36,5	24	45
FW 12 24x71	3,6	30	36,5	24	71
FW 12 24x90	3,6	30	36,5	24	90
FW 12 30x56	4,8	38	43,5	30	56
FW 12 30x75	4,8	38	43,5	30	75
FW 12 30x95	4,8	38	43,5	30	95

Guide bushes for ball cages

Mat.: 1.7131 - 680 HV 30

FW 13



REF d1* x S	d4	d2	d3	f	l	K	S
FW 13 12x18	16	22	26	6	24	6	18
FW 13 18x23	24	30	35	11	34	6	23
FW 13 24x27	30	38	43	17	44	6	27
FW 13 30x33	38	46	52	21	54	6	33

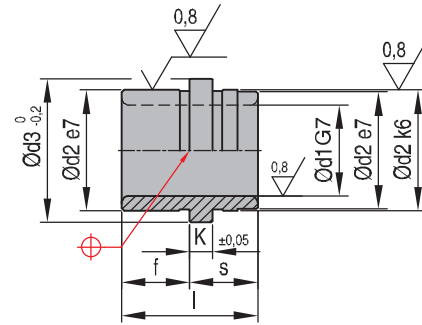
*See d1 on GB112 and GB113 on p44



FW 14

"Leader pin bushings

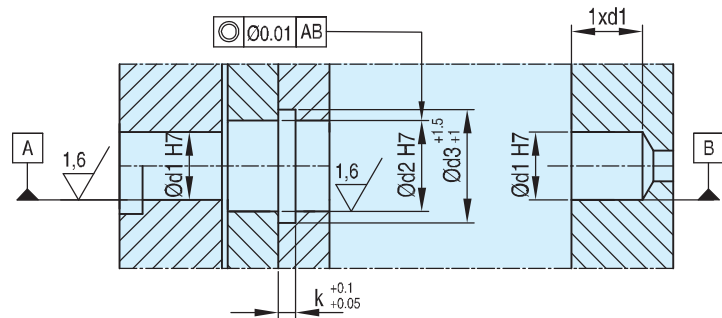
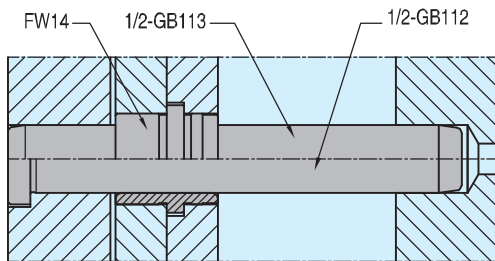
Mat.: Brons



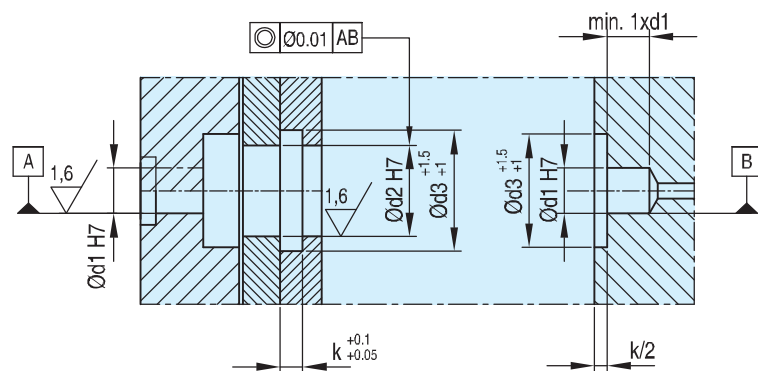
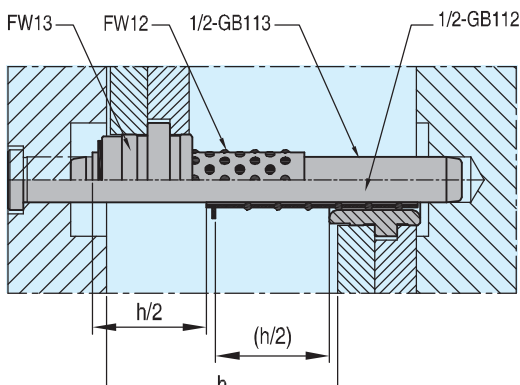
REF	d1xS	d2	d3	f	K	l
FW 14 12x6		16	19	9	3	15
FW 14 12x9		16	19	12	3	21
FW 14 12x12		16	19	17	3	29
FW 14 18x12		25	29	17	6	29
FW 14 18x17		25	29	22	6	39
FW 14 18x22		25	29	27	6	49
FW 14 30x17		42	46	22	6	39
FW 14 30x22		42	46	27	6	49
FW 14 30x27		42	46	36	6	63

Installation Example

GB 112 - GB 113 - FW 14



GB 112 - GB 113 - FW 12 - FW13

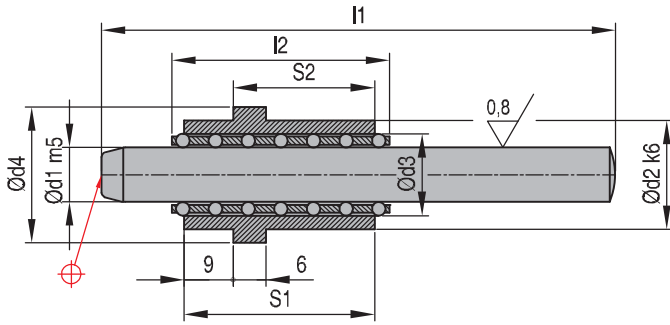




Guided ejection system

1.7130

K 7580



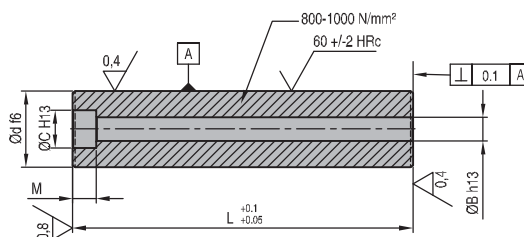
REF	d1	d2	d3	d4	l1	l2	S2
K 7580x10x16	10	20	15	25	50	40	16
K 7580x10x20	10	20	15	25	70	40	20
K 7580x10x26	10	20	15	25	100	40	26
K 7580x10x36	10	20	15	25	120	40	36
K 7580x16x20	16	30	22	35	70	45	20
K 7580x16x26	16	30	22	35	100	50	26
K 7580x16x36	16	30	22	35	120	60	36



SP

Guide Pillar

Mat.: 1.7131



REF	d x L	d	L	B	M	C	Screw*
SP 24 x 50		24	50	9	9	15	M8 x 60
SP 24 x 60		24	60	9	9	15	M8 x 70
SP 24 x 70		24	70	9	9	15	M8 x 80
SP 24 x 80		24	80	9	9	15	M8 x 90
SP 24 x 90		24	90	9	9	15	M8 x 100
SP 24 x 100		24	100	9	9	15	M8 x 110
SP 36 x 60		36	60	11	11	18	M10 x 80
SP 36 x 70		36	70	11	11	18	M10 x 90
SP 36 x 80		36	80	11	11	18	M10 x 100
SP 36 x 90		36	90	11	11	18	M10 x 110
SP 36 x 100		36	100	11	11	18	M10 x 120
SP 36 x 110		36	110	11	11	18	M10 x 130

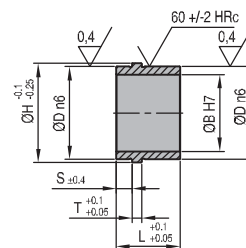
REF	d x L	d	L	B	M	C	Screw*
SP 36 x 120		36	120	11	11	18	M10 x 140
SP 36 x 130		36	130	11	11	18	M10 x 150
SP 36 x 140		36	140	11	11	18	M10 x 160
SP 48 x 80		48	80	13	13	20	M12 x 100
SP 48 x 90		48	90	13	13	20	M12 x 110
SP 48 x 100		48	100	13	13	20	M12 x 120
SP 48 x 110		48	110	13	13	20	M12 x 130
SP 48 x 120		48	120	13	13	20	M12 x 140
SP 48 x 130		48	130	13	13	20	M12 x 150
SP 48 x 140		48	140	13	13	20	M12 x 160
SP 48 x 160		48	160	13	13	20	M12 x 180
SP 48 x 180		48	180	13	13	20	M12 x 200

*DIN 912 - 12.9 (not included)

GB 1000

Guide Pillar

Mat.: 1.7131



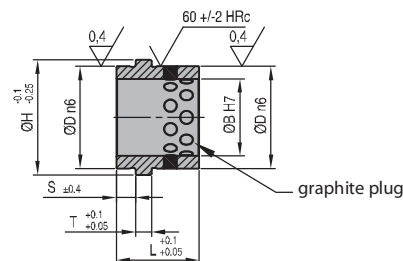
REF	B	D	H	S	T	L
GB 1000	24	32	36	6	5	26
GB 1001	36	44	48	6	5	30
GB 1002	48	58	62	10	6	40

*DIN 912 - 12.9 (not included)

GB 5000

Guide Pillar

Mat.: 1.7131

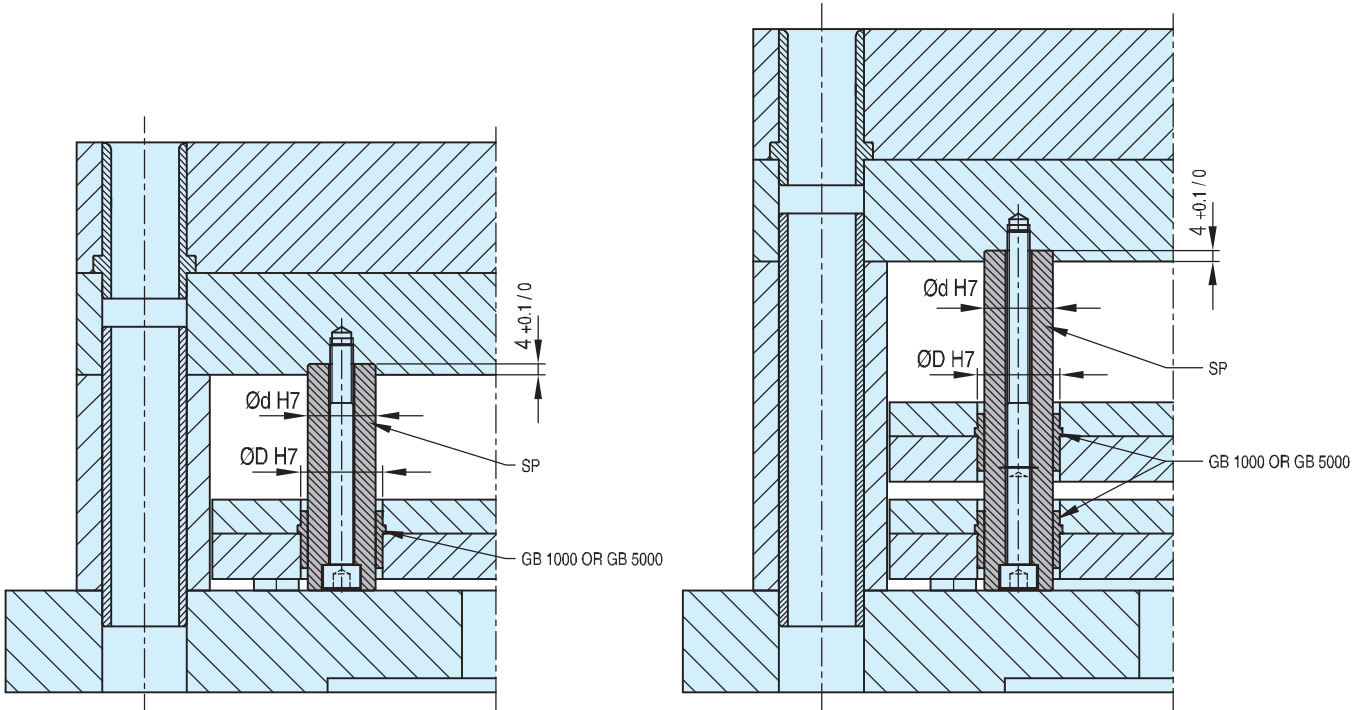


REF	B	D	H	S	T	L
GB 5000	24	32	36	6	5	26
GB 5001	36	44	48	6	5	30
GB 5002	48	58	62	10	6	40

*DIN 912 - 12.9 (not included)

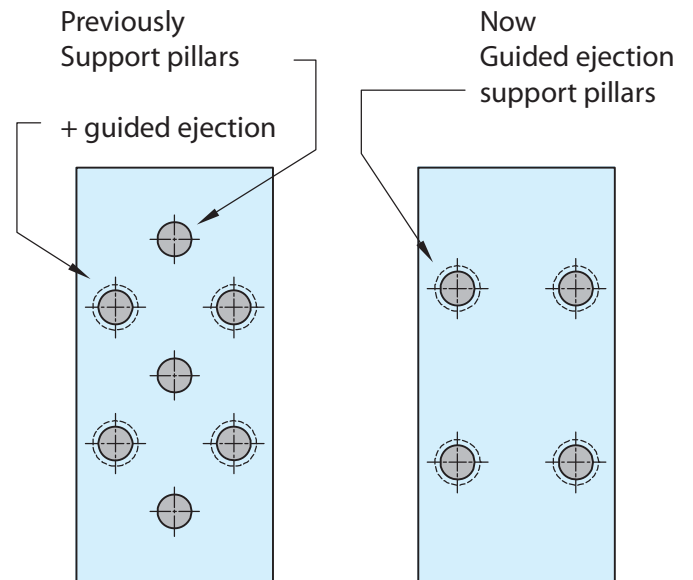


Installation



Benefits:

- combined solution for guided ejection and support pillars
- more space for ejector pins
- cost saving by eliminating the use of double products
- less drilling, lower assembly times
- easy to install

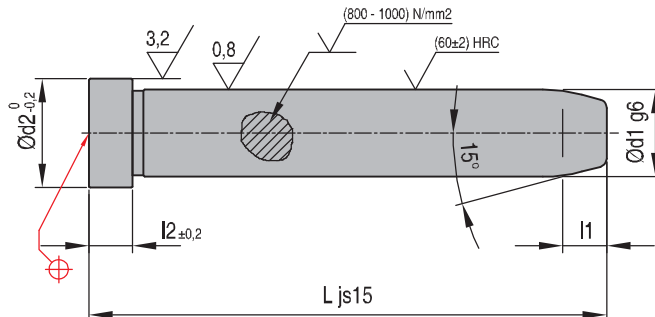




APD

Angle pins

Mat.: 1.7131



REF d1 x L	d2	l1	l2
APD 9x40	12	5	3
APD 9x60	12	5	3
APD 9x80	12	5	3
APD 9x100	12	5	3
APD 9x120	12	5	3
APD 10x40	12	5	3
APD 10x60	12	5	3
APD 10x80	12	5	3
APD 10x100	12	5	3
APD 10x120	12	5	3
APD 10x140	12	5	3
APD 10x160	12	5	3
APD 10x170	12	5	3
APD 12x40	16	5	6
APD 12x60	16	5	6
APD 12x80	16	5	6
APD 12x100	16	5	6
APD 12x110	16	5	6
APD 12x120	16	5	6
APD 12x140	16	5	6
APD 12x160	16	5	6
APD 14x40	18	6	8
APD 14x60	18	6	8
APD 14x80	18	6	8
APD 14x100	18	6	8
APD 14x110	18	6	8
APD 14x120	18	6	8
APD 14x140	18	6	8
APD 14x160	18	6	8
APD 14x180	18	6	8
APD 14x200	18	6	8
APD 14x210	18	6	8
APD 14x220	18	6	8
APD 14x230	18	6	8
APD 14x250	18	6	8
APD 15x60	18	7	8
APD 15x80	18	7	8
APD 15x100	18	7	8
APD 15x120	18	7	8
APD 15x140	18	7	8
APD 15x160	18	7	8
APD 15x180	18	7	8
APD 16x40	20	7	8
APD 16x60	20	7	8
APD 16x80	20	7	8
APD 16x100	20	7	8

REF d1 x L	d2	l1	l2
APD 16x110	20	7	8
APD 16x120	20	7	8
APD 16x140	20	7	8
APD 16x160	20	7	8
APD 16x180	20	7	8
APD 16x200	20	7	8
APD 16x210	20	7	8
APD 16x220	20	7	8
APD 16x230	20	7	8
APD 16x240	20	7	8
APD 18x40	22	8	8
APD 18x60	22	8	8
APD 18x80	22	8	8
APD 18x100	22	8	8
APD 18x110	22	8	8
APD 18x120	22	8	8
APD 18x140	22	8	8
APD 18x160	22	8	8
APD 18x180	22	8	8
APD 18x200	22	8	8
APD 18x210	22	8	8
APD 18x220	22	8	8
APD 18x230	22	8	8
APD 18x250	22	8	8
APD 18x260	22	8	8
APD 18x280	22	8	8
APD 20x60	24	8	8
APD 20x80	24	8	8
APD 20x100	24	8	8
APD 20x110	24	8	8
APD 20x120	24	8	8
APD 20x140	24	8	8
APD 20x160	24	8	8
APD 20x180	24	8	8
APD 20x200	24	8	8
APD 20x210	24	8	8
APD 20x220	24	8	8
APD 20x230	24	8	8
APD 20x240	24	8	8
APD 20x260	24	8	8
APD 20x280	24	8	8
APD 22x80	26	8	15
APD 22x100	26	8	15
APD 22x110	26	8	15
APD 22x120	26	8	15
APD 22x140	26	8	15

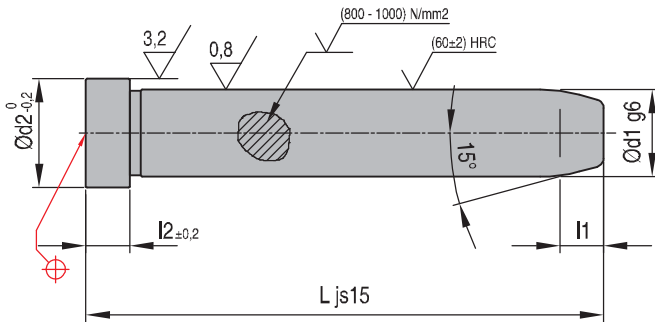
REF d1 x L	d2	l1	l2
APD 22x160	26	8	15
APD 22x180	26	8	15
APD 22x200	26	8	15
APD 22x210	26	8	15
APD 22x220	26	8	15
APD 22x230	26	8	15
APD 22x240	26	8	15
APD 22x270	26	8	15
APD 22x300	26	8	15
APD 24x80	28	8	15
APD 24x100	28	8	15
APD 24x110	28	8	15
APD 24x120	28	8	15
APD 24x140	28	8	15
APD 24x160	28	8	15
APD 24x180	28	8	15
APD 24x200	28	8	15
APD 24x210	28	8	15
APD 24x220	28	8	15
APD 24x230	28	8	15
APD 24x240	28	8	15
APD 24x270	28	8	15
APD 24x300	28	8	15
APD 26x100	30	8	15
APD 26x120	30	8	15
APD 26x140	30	8	15
APD 26x160	30	8	15
APD 26x180	30	8	15
APD 26x200	30	8	15
APD 26x240	30	8	15
APD 26x270	30	8	15
APD 30x100	34	8	15
APD 30x120	34	8	15
APD 30x160	34	8	15
APD 30x180	34	8	15
APD 30x200	34	8	15
APD 30x210	34	8	15
APD 30x220	34	8	15
APD 30x240	34	8	15
APD 30x270	34	8	15
APD 30x300	34	8	15
APD 30x360	34	8	15
APD 34x100	38	8	15
APD 34x120	38	8	15
APD 34x170	38	8	15
APD 34x190	38	8	15



Angle pins

Mat.: 1.7131

APD



REF d1 x L	d2	l1	l2
APD 34x210	38	8	15
APD 34x250	38	8	15
APD 40x160	48	10	15
APD 40x200	48	10	15
APD 40x240	48	10	15
APD 40x300	48	10	15

REF d1 x L	d2	l1	l2
APD 40x360	48	10	15
APD 42x160	48	10	15
APD 42x200	48	10	15
APD 42x240	48	10	15
APD 42x300	48	10	15
APD 50x160	58	10	15

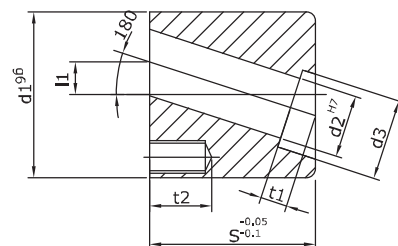
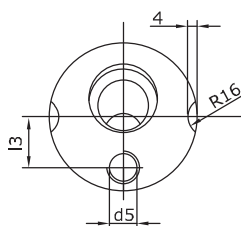
REF d1 x L	d2	l1	l2
APD 50x200	58	10	15
APD 50x240	58	10	15
APD 50x300	58	10	15
APD 50x360	58	10	15



APH

Angle Pin Housing

Mat.: 1.7131 (16MnCr5)



- High precision manufacturing parts
- Machining only from kissing face.
- Reduce downtime of production with wide range of stock
- Easy and quick replacement frontremovable
- Reduction of manufacturing cost of injection molding tools
- Small installation area

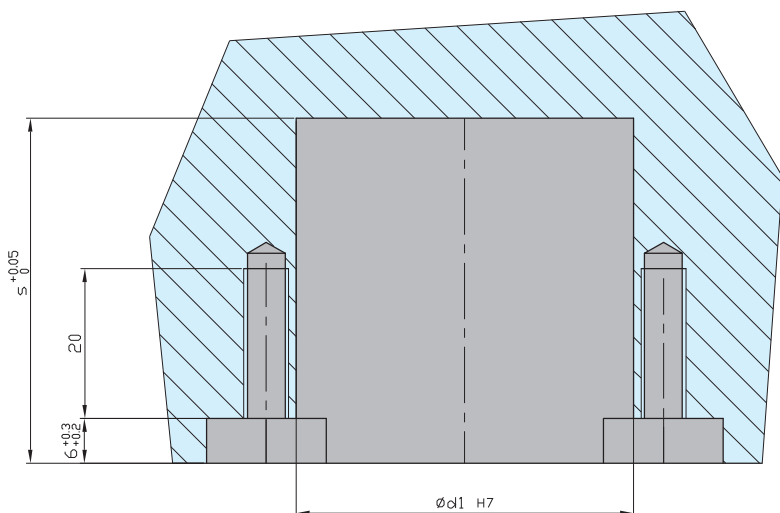
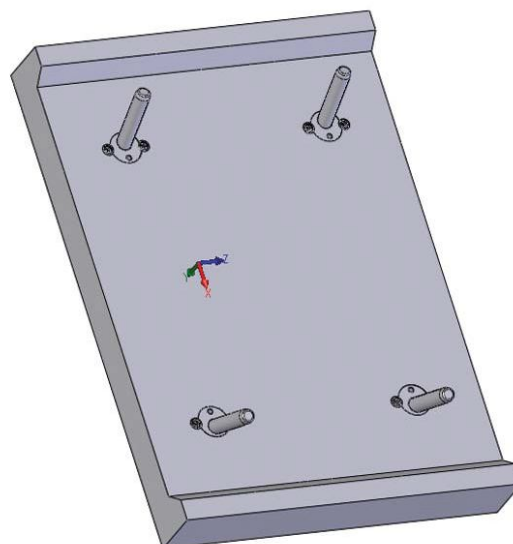
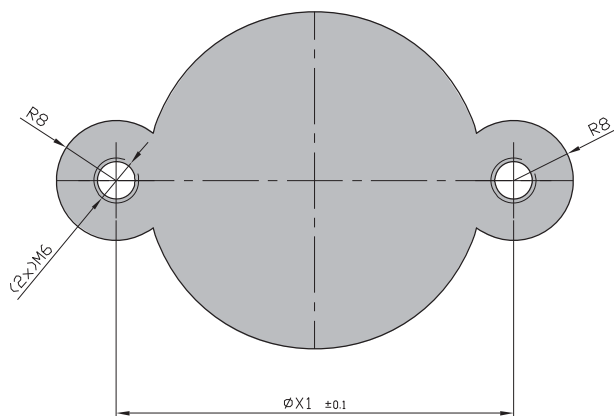
- Easy mounting and dismounting
- Save time and cost.

Hardness: 61-63 HRC

Heat treatment: Case hardened

Mounting rings **APHSM620** (2 pcs) and screws **APHMR16** (2 pcs) included

REF	d1	d2	d3	d5	s	l1	l3	t1	t2	X1
APH-12	32	12	17	M6	36	6,0	10,0	6	12,0	40
APH-14	36	14	19	M8	36	6,0	12,0	8	16,5	44
APH-16	40	16	21	M8	46	8,0	13,5	8	16,5	48
APH-18	40	18	23	M8	46	8,5	13,5	8	16,5	48
APH-20	45	20	25	M8	46	8,5	15,0	8	16,5	53
APH-30	63	30	34	M10	66	12	21	15	20	71



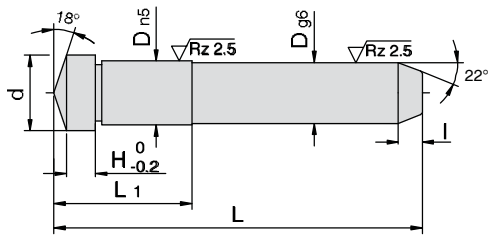
7



Angle Pin with collar

Mat.: 1.7139 ca. 700HV

IPWC



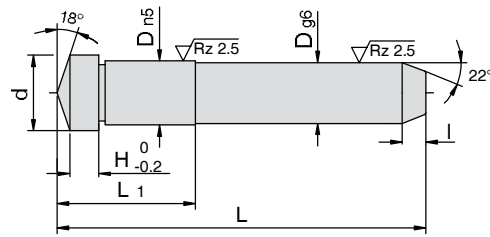
REF	d	H	I	L1	D	L
IPWC 10x40						40
IPWC 10x60						60
IPWC 10x80	12	2	4	13	10	80
IPWC 10x100						100
IPWC 10x120						120
IPWC 12x60						60
IPWC 12x80						80
IPWC 12x100	15	3	5	17	12	100
IPWC 12x120						120
IPWC 12x140						140
IPWC 12x160						160
IPWC 14x60						60
IPWC 14x80						80
IPWC 14x100	17	3	5	17	14	100
IPWC 14x120						120
IPWC 14x140						140
IPWC 14x160						160
IPWC 16x60						60
IPWC 16x80						80
IPWC 16x100						100
IPWC 16x120	19	3	5	22	16	120
IPWC 16x140						140
IPWC 16x160						160
IPWC 16x180						180
IPWC 16x200						200
IPWC 18x60						60
IPWC 18x80						80
IPWC 18x100						100
IPWC 18x120						120
IPWC 18x140	21	3	7	22	18	140
IPWC 18x160						160
IPWC 18x180						180
IPWC 18x200						200
IPWC 18x220						220
IPWC 18x240						240
IPWC 20x80						80
IPWC 20x100						100
IPWC 20x120						120
IPWC 20x140						140
IPWC 20x160	23	4	7	22	20	160
IPWC 20x180						180
IPWC 20x200						200
IPWC 20x220						220
IPWC 20x240						240
IPWC 22x60						60
IPWC 22x80						80
IPWC 22x100	25	4	7	27	22	100
IPWC 22x120						120
IPWC 22x140						140
IPWC 22x160						160
IPWC 22x180						180
IPWC 22x200	25	4	7	27	22	200
IPWC 22x220						220
IPWC 22x240						240



IPWC

Angle Pin with collar

Mat.: 1.7139 ca. 700HV

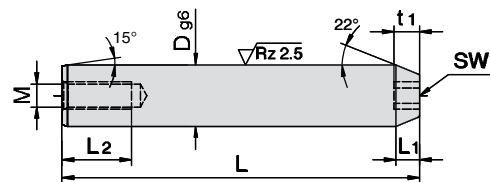


REF	d	H	I	L1	D	L
IPWC 24x80	27	4	7	27	24	80
IPWC 24x100						100
IPWC 24x120						120
IPWC 24x140						140
IPWC 24x160						160
IPWC 24x180						180
IPWC 24x200						200
IPWC 24x220						220
IPWC 24x240						240
IPWC 24x280						280
IPWC 30x100	35	5	7	36	30	100
IPWC 30x120						120
IPWC 30x140						140
IPWC 30x160						160
IPWC 30x180						180
IPWC 30x200						200
IPWC 30x220						220
IPWC 30x240						240
IPWC 30x280						280
IPWC 30x320						320
IPWC 30x360	360					

IPNH

Headless Angle Pin

Mat.: 1.7139 ca. 700HV



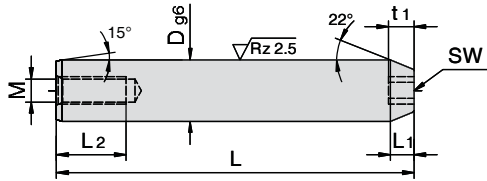
REF	M	L2	L1	SW	t1	D	L
IPNH 8x40	5	10	2,3	4	4	8	40
IPNH 8x60							60
IPNH 8x80							80
IPNH 8x100							100
IPNH 10x40	6	10	4	4	4	10	40
IPNH 10x60							60
IPNH 10x80							80
IPNH 10x100							100
IPNH 10x120	6	10	5	5	5	12	120
IPNH 12x60							60
IPNH 12x80							80
IPNH 12x100							100
IPNH 12x120	6	10	5	5	5	12	120
IPNH 12x140							140
IPNH 12x160							160



Headless Angle Pin

Mat.: 1.7139 ca. 700HV

IPNH



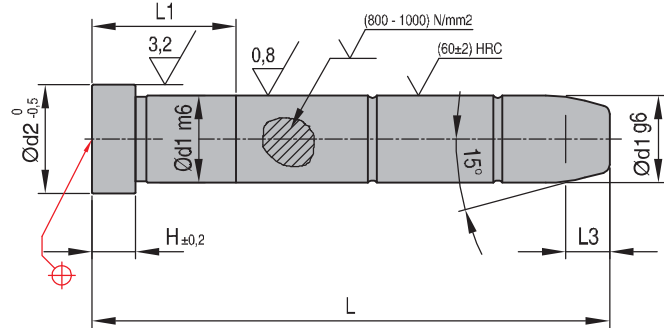
REF	M	L2	L1	SW	t1	D	L
IPNH 14x50							50
IPNH 14x60							60
IPNH 14x70							70
IPNH 14x75							75
IPNH 14x80							80
IPNH 14x90	6	10	5	5	5	14	90
IPNH 14x100							100
IPNH 14x120							120
IPNH 14x140							140
IPNH 14x160							160
IPNH 15x50							50
IPNH 15x60							60
IPNH 15x70	8	17	5	5	5	15	70
IPNH 15x80							80
IPNH 15x90							90
IPNH 16x60	8	17	5	6	6	16	60
IPNH 16x80							80
IPNH 16x90							90
IPNH 16x100							100
IPNH 16x120							120
IPNH 16x130							130
IPNH 16x140	8	17	5	6	6	16	140
IPNH 16x160							160
IPNH 16x180							180
IPNH 16x200							200
IPNH 18x60							60
IPNH 18x70							70
IPNH 18x80							80
IPNH 18x90							90
IPNH 18x100							100
IPNH 18x120							120
IPNH 18x125	8	17	7	6	6	18	125
IPNH 18x140							140
IPNH 18x150							150
IPNH 18x160							160
IPNH 18x170							170
IPNH 18x180							180
IPNH 18x200							200
IPNH 18x220							220
IPNH 18x60							60
IPNH 18x70							70
IPNH 18x80							80
IPNH 18x90							90
IPNH 18x100	10	17	7	6	6	18	100
IPNH 18x125							125
IPNH 18x140							140
IPNH 18x150							150
IPNH 18x170							170



R08

Leader pins

Mat.: 1.7131



REF d1 x L	d2	H	L1	d1	L	I3
R 08x10x40	12	3	17	10	40	7
R 08x10x60	12	3	17	10	60	7
R 08x10x80	12	3	22	10	80	7
R 08x10x100	12	3	27	10	100	7
R 08x12x60	16	6	17	12	60	7
R 08x12x80	16	6	22	12	80	7
R 08x12x100	16	6	27	12	100	7
R 08x12x120	16	6	27	12	120	7
R 08x14x60	18	8	17	14	60	7
R 08x14x80	18	8	22	14	80	7
R 08x14x100	18	8	27	14	100	7
R 08x14x120	18	8	27	14	120	7
R 08x14x140	18	8	36	14	140	7
R 08x14x160	18	8	36	14	160	7
R 08x16x60	20	8	17	16	60	7
R 08x16x80	20	8	22	16	80	7
R 08x16x100	20	8	27	16	100	7
R 08x16x120	20	8	27	16	120	7
R 08x16x140	20	8	36	16	140	7
R 08x16x160	20	8	36	16	160	7
R 08x18x80	22	8	22	18	80	7
R 08x18x100	22	8	27	18	100	7
R 08x18x120	22	8	27	18	120	7
R 08x18x140	22	8	36	18	140	7
R 08x18x160	22	8	36	18	160	7
R 08x18x180	22	8	46	18	180	7
R 08x18x200	22	8	56	18	200	7
R 08x20x80	24	8	22	20	80	7
R 08x20x100	24	8	27	20	100	7
R 08x20x120	24	8	27	20	120	7
R 08x20x140	24	8	36	20	140	7
R 08x20x160	24	8	36	20	160	7

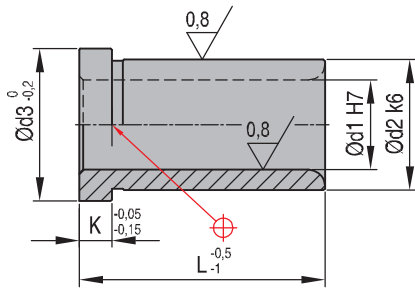
REF d1 x L	d2	H	L1	d1	L	I3
R 08x20x180	24	8	56	20	180	7
R 08x20x200	24	8	56	20	200	7
R 08x22x100	26	15	27	22	100	7
R 08x22x120	26	15	27	22	120	7
R 08x22x140	26	15	36	22	140	7
R 08x22x160	26	15	36	22	160	7
R 08x22x180	26	15	46	22	180	7
R 08x22x200	26	15	56	22	200	7
R 08x22x220	26	15	56	22	220	7
R 08x24x100	28	15	27	24	100	7
R 08x24x120	28	15	27	24	120	7
R 08x24x140	28	15	36	24	140	7
R 08x24x160	28	15	36	24	160	7
R 08x24x180	28	15	46	24	180	7
R 08x24x200	28	15	56	24	200	7
R 08x24x220	28	15	56	24	220	7
R 08x30x160	36	15	36	30	160	7
R 08x30x200	36	15	56	30	200	7
R 08x30x240	36	15	56	30	240	7
R 08x32x160	36	15	36	32	160	7
R 08x32x200	36	15	56	32	200	7
R 08x32x240	36	15	56	32	240	7
R 08x40x200	48	15	56	40	200	10
R 08x40x240	48	15	56	40	240	10
R 08x40x300	48	15	56	40	300	10
R 08x50x200	58	15	46	50	200	15
R 08x50x240	58	15	56	50	240	15
R 08x50x300	58	15	56	50	300	15
R 08x60x240	68	20	56	60	240	20
R 08x60x300	68	20	56	60	300	20
R 08x60x360	68	20	76	60	360	20



Locating sleeves

Mat.: 1.7131 ca 720 Hv 30

FB 120

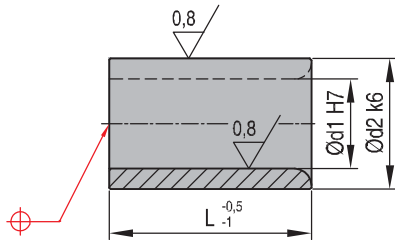


REF d1 x L	d2	d3		REF d1 x L	d2	d3	
FB 120 10x12	15	19	4	FB 120 24x20	35	40	5
FB 120 10x20	15	19	4	FB 120 24x36	35	40	5
FB 120 12x12	18	22	4	FB 120 24x50	35	40	5
FB 120 12x20	18	22	4	FB 120 26x20	35	40	5
FB 120 14x16	22	26	4	FB 120 26x36	35	40	5
FB 120 14x28	22	26	4	FB 120 26x50	35	40	5
FB 120 16x16	26	30	4	FB 120 30x36	42	47	5
FB 120 16x28	26	30	4	FB 120 30x50	42	47	5
FB 120 16x50	26	30	4	FB 120 40x70	60	68	15
FB 120 18x16	26	30	4	FB 120 50x70	70	78	15
FB 120 18x28	26	30	4	FB 120 50x116	66	72	10
FB 120 18x50	26	30	4	FB 120 50x156	66	72	10
FB 120 20x20	30	35	4	FB 120 50x196	66	72	10
FB 120 20x36	30	35	4	FB 120 60x116	80	88	20
FB 120 20x50	30	35	4	FB 120 60x156	80	88	20
FB 120 22x20	30	35	5	FB 120 60x196	80	88	20
FB 120 22x36	30	35	5	FB 120 60x246	80	88	20
FB 120 22x50	30	35	5	FB 120 80x100	100	108	20

Locating sleeves

Mat.: 1.7131 ca 720 Hv 30

FB 140



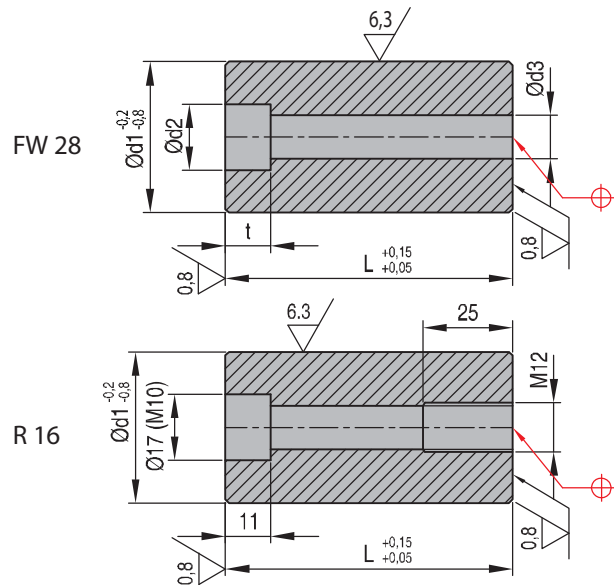
REF d1 x L	d2	REF d1 x L	d2
FB 140 10x12	15	FB 140 20x36	30
FB 140 10x20	15	FB 140 20x50	30
FB 140 12x12	18	FB 140 22x20	30
FB 140 12x20	18	FB 140 22x36	30
FB 140 14x16	22	FB 140 22x50	30
FB 140 14x28	22	FB 140 24x20	35
FB 140 16x16	26	FB 140 24x36	35
FB 140 16x28	26	FB 140 24x50	35
FB 140 16x50	26	FB 140 26x20	35
FB 140 18x16	26	FB 140 26x36	35
FB 140 18x28	26	FB 140 26x50	35
FB 140 18x50	26	FB 140 30x36	42
FB 140 20x20	30	FB 140 30x50	42



FW 28 - R 16

Support pillars

Mat.: 1.1730 - ~640 N/mm²



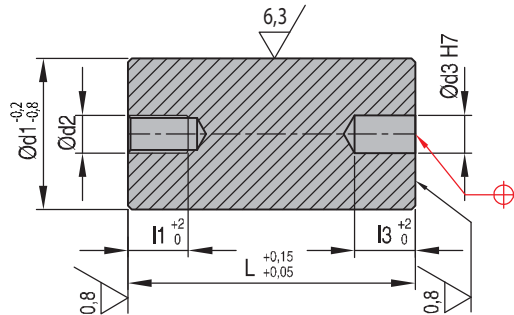
REF d1xL	d2	d3	t
FW 28 32x36	15	9	9
FW 28 32x46	15	9	9
FW 28 32x56	15	9	9
FW 28 32x66	15	9	9
FW 28 32x76	15	9	9
FW 28 32x86	15	9	9
FW 28 32x96	15	9	9
FW 28 32x106	15	9	9
FW 28 32x126	15	9	9
FW 28 40x46	18	11	11
FW 28 40x56	18	11	11
FW 28 40x66	18	11	11
FW 28 40x76	18	11	11
FW 28 40x86	18	11	11
FW 28 40x96	18	11	11
FW 28 40x106	18	11	11
FW 28 40x126	18	11	11
FW 28 50x46	20	13	13
FW 28 50x56	20	13	13
FW 28 50x66	20	13	13
FW 28 50x76	20	13	13
FW 28 50x86	20	13	13
FW 28 50x96	20	13	13
FW 28 50x106	20	13	13
FW 28 50x116	20	13	13
FW 28 50x126	20	13	13
FW 28 63x46	20	13	13
FW 28 63x66	20	13	13
FW 28 63x76	20	13	13
FW 28 63x96	20	13	13
FW 28 63x106	20	13	13
FW 28 63x116	20	13	13
FW 28 63x126	20	13	13
FW 28 63x136	20	13	13
REF d1xL	L		
R16 80x76	25		
R16 80x96	25		
R16 80x116	25		
R16 80x136	25		



Support pillars

 Mat: 1.1730 - $\sim 640 \text{ N/mm}^2$

FW 29



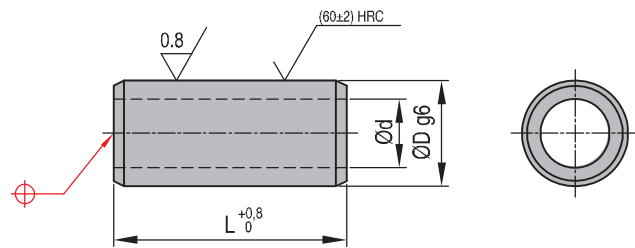
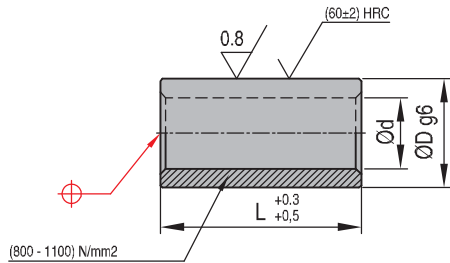
REF d1 x L	d2	d3	l1	l3
FW 29 32x36	M8	8	14	14
FW 29 32x46	M8	8	14	14
FW 29 32x56	M8	8	14	14
FW 29 32x66	M8	8	14	14
FW 29 32x76	M8	8	14	14
FW 29 32x86	M8	8	14	14
FW 29 32x96	M8	8	14	14
FW 29 32x106	M8	8	14	14
FW 29 32x126	M8	8	14	14
FW 29 40x46	M10	10	18	18
FW 29 40x56	M10	10	18	18
FW 29 40x66	M10	10	18	18
FW 29 40x76	M10	10	18	18
FW 29 40x86	M10	10	18	18
FW 29 40x96	M10	10	18	18
FW 29 40x106	M10	10	18	18
FW 29 40x126	M10	10	18	18
FW 29 50x46	M10	10	18	18
FW 29 50x56	M10	10	18	18
FW 29 50x66	M10	10	18	18
FW 29 50x76	M10	10	18	18
FW 29 50x86	M10	10	18	18
FW 29 50x96	M10	10	18	18
FW 29 50x106	M10	10	18	18
FW 29 50x116	M10	10	18	18
FW 29 50x126	M10	10	18	18
FW 29 63x46	M10	10	18	18
FW 29 63x66	M10	10	18	18
FW 29 63x76	M10	10	18	18
FW 29 63x96	M10	10	18	18
FW 29 63x106	M10	10	18	18
FW 29 63x126	M10	10	18	18



R 09 + PH

Tubular dowels

Mat.: 1.7131



REF D x L	d	D	L
R 09 10x20	6,2	10	20
R 09 10x30	6,2	10	30
R 09 10x40	6,2	10	40
R 09 10x50	6,2	10	50
R 09 10x60	6,2	10	60
R 09 10x70	6,2	10	70
R 09 10x80	6,2	10	80
R 09 10x100	6,2	10	100
R 09 10x120	6,2	10	120
R 09 10x140	6,2	10	140
R 09 14x30	8,5	14	30
R 09 14x40	8,5	14	40
R 09 14x50	8,5	14	50
R 09 14x60	8,5	14	60
R 09 14x70	8,5	14	70
R 09 14x80	8,5	14	80
R 09 14x120	8,5	14	120
R 09 14x140	8,5	14	140
R 09 14x160	8,5	14	160
R 09 14x180	8,5	14	180
R 09 18x40	10,5	18	40
R 09 18x60	10,5	18	60
R 09 18x70	10,5	18	70
R 09 18x80	10,5	18	80
R 09 18x120	10,5	18	120
R 09 18x140	10,5	18	140
R 09 18x160	10,5	18	160
R 09 18x180	10,5	18	180
R 09 18x200	10,5	18	200
R 09 18x220	10,5	18	220
R 09 18x240	10,5	18	240
R 09 24x60	13,0	24	60
R 09 24x80	13,0	24	80
R 09 24x100	13,0	24	100
R 09 24x120	13,0	24	120
R 09 24x140	13,0	24	140
R 09 24x160	13,0	24	160
R 09 24x180	13,0	24	180
R 09 24x200	13,0	24	200
R 09 24x240	13,0	24	240
R 09 30x80	17,0	30	80
R 09 30x100	17,0	30	100
R 09 30x120	17,0	30	120
R 09 30x140	17,0	30	140
R 09 30x160	17,0	30	160
R 09 30x180	17,0	30	180
R 09 30x200	17,0	30	200
R 09 30x220	17,0	30	220
R 09 30x240	17,0	30	240
R 09 30x260	17,0	30	260
R 09 30x280	17,0	30	280
R 09 30x300	17,0	30	300

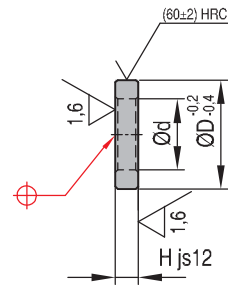
REF D x L	d	D	L
PH 10 x 10	6,5	10	10
PH 10 x 22	6,5	10	22
PH 10 x 26	6,5	10	26
PH 12 x 8	8,5	12	8
PH 12 x 28	8,5	12	28
PH 14 x 10	10,5	14	10
PH 14 x 36	10,5	14	36
PH 18 x 12	13,0	18	12
PH 18 x 38	13,0	18	38
PH 18 x 48	13,0	18	48
PH 18 x 58	13,0	18	58
PH 18 x 68	13,0	18	68
PH 22 x 12	17,0	22	12
PH 22 x 48	17,0	22	48
PH 22 x 58	17,0	22	58
PH 22 x 68	17,0	22	68


Disks for tubular dowels.

Mat.: 1.7131

R 091

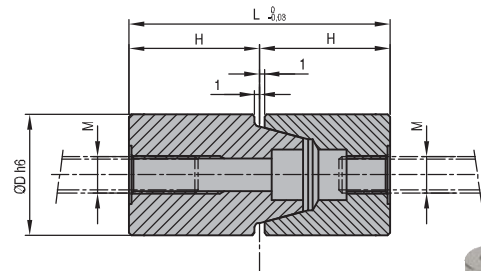
REF D x H	H	d	D
R 091 14x3	3	6,2	14
R 091 18x4	4	8,5	18
R 091 24x5	5	10,5	24
R 091 30x6	6	13,0	30
R 091 40x8	8	17,0	40


Tapered interlocks - Set

Mat.: 1.7131 - 60 ±2 HRC

FW 40 N

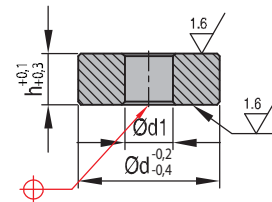
REF d1 A - B	D	H	L	M
FW 40 N 12x17	12	17	34	M4
FW 40 N 14x17	14	17	34	M5
FW 40 N 16x17	16	17	34	M5
FW 40 N 20x27	20	27	54	M8
FW 40 N 25x27	25	27	54	M8
FW 40 N 26x27	26	27	54	M8
FW 40 N 30x36	30	36	72	M10
FW 40 N 32x36	32	36	72	M10
FW 40 N 42x46	42	46	92	M10


Tapered interlocks-Compensating disc

Mat.: 1.7131 - 59 HRC

FW 41

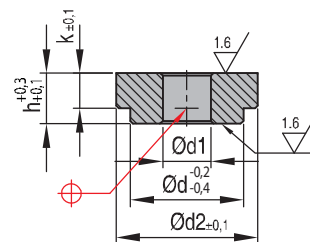
REF d1 A - B	d1	h
FW 41 12	5,5	5
FW 41 14	5,5	5
FW 41 16	5,5	5
FW 41 20	8,5	8
FW 41 25	8,5	8
FW 41 26	8,5	8
FW 41 30	11,0	10
FW 41 32	11,0	10
FW 41 42	11,0	10


Tapered interlocks-Compensating disc

Mat.: 1.7131 - 59 HRC

FW 42

REF d1 A - B	d1	d2	h	k
FW 42 12	5,5	16	5	3,2
FW 42 14	5,5	16	5	3,2
FW 42 16	5,5	25,5	9	6,3
FW 42 20	8,5	25,5	9	6,3
FW 42 25	8,5	31,5	9	6,3
FW 42 26	8,5	31,5	9	6,3
FW 42 30	11,0	35,5	10	6,3
FW 42 32	11,0	35,5	10	6,3
FW 42 42	11,0	47,5	10	6,3

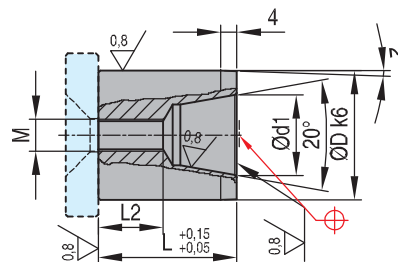




FT

Tapered interlocks

Mat.: 1.7131 - 58-62 HRC

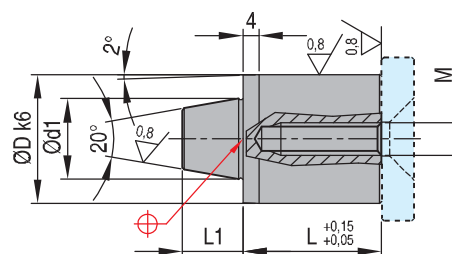


REF D x L	L	M	d1	D	L2
FT 12-15	15	M5	7	12	7
FT 20-21	21	M6	13	20	9
FT 20-31	31	M6	13	20	19
FT 25-21	21	M6	16	25	8
FT 25-31	31	M6	16	25	18
FT 25-41	41	M6	16	25	28
FT 32-30	30	M8	20	32	14
FT 32-50	50	M8	20	32	34
FT 42-30	30	M8	30	42	12
FT 42-50	50	M8	30	42	32

MT

Tapered interlocks

Mat.: 1.7131 - 58-62 HRC

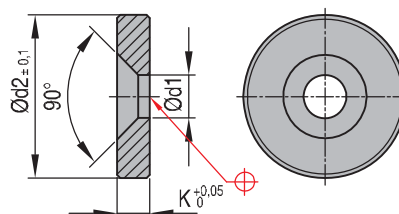


REF D x L	L	L1	M	d1	D
MT 12-15	15	7	M5	7	12
MT 20-21	21	11	M6	13	20
MT 20-31	31	11	M6	13	20
MT 25-21	21	12	M6	16	25
MT 25-31	31	12	M6	16	25
MT 25-41	41	12	M6	16	25
MT 32-30	30	15	M8	20	32
MT 32-50	50	15	M8	20	32
MT 42-30	30	17	M8	30	42
MT 42-50	50	17	M8	30	42

AGS

Shoulder plates for tapered interlocks

Mat.: 1.7131 - 58-62 HRC



REF	d1	d2	K	for
AGS 12	5,5	16	5	FT 12 / MT 12
AGS 20	6,6	25	5	FT 20 / MT 20
AGS 25	6,6	30	5	FT 25 / MT 25
AGS 32	9,0	37	6	FT 32 / MT 32
AGS 42	9,0	47	6	FT 42 / MT 42

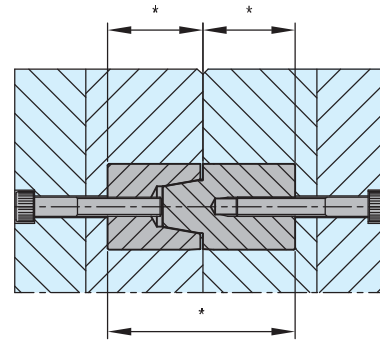
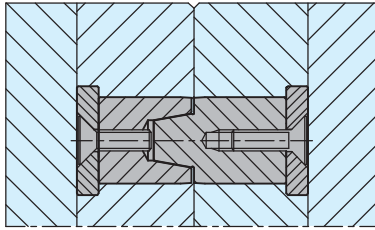


Shoulder plates for tapered interlocks

1.7131 - 58-62 HRC

FT

Typical Application



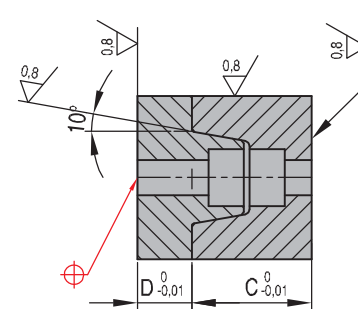
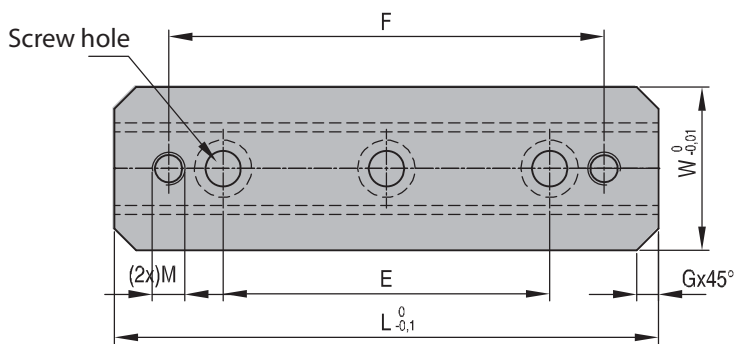
Measure actual height of assembled pair FT +MT and mill counterbore accordingly.



RSI

Tapered interlocks - Set

Mat.: 1.7131 55-57 HRC



REF	E	L	W	D	C	G	M	F
RSI-50	-	50	25	8	17,5	5	M 5	M 5
RSI-100	60	100	30	10	22,0	5	M 6	M 6
RSI-150	100	150	40	13	25,0	5	M 8	M 8



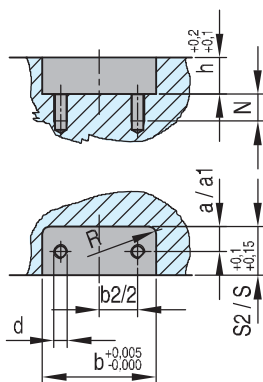
Straight interlocks - Set

Mat.: 1.7131

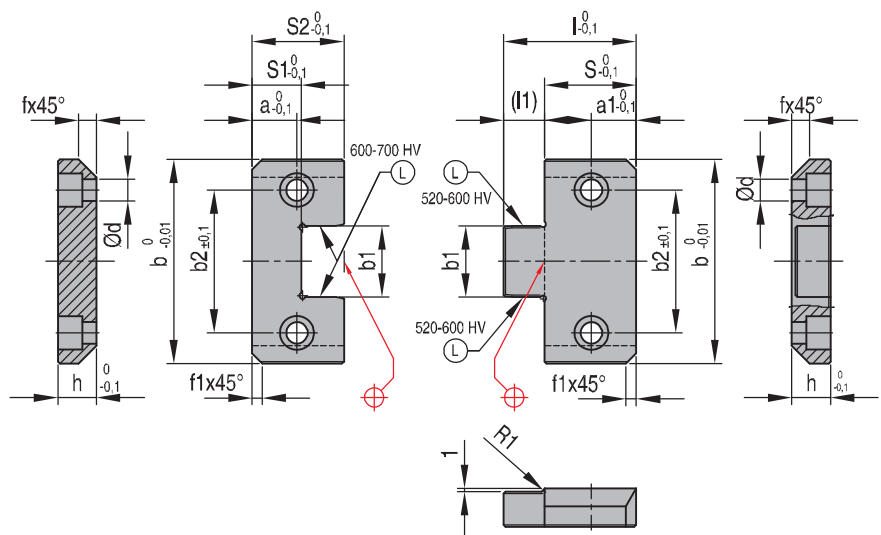
FW 45



Installation



L = Lamcoated® (Ws2)



Mat. 1.7131 - 56-57 HRC

Mat. 1.7131 - 56-57 HRC

REF	b	b2/2	d	S2	S	N	a	h	a1	b1	b2	f	f1	l	l1	S1	≤R
FW 45 40	11,0	M5	27	17	12	6,0	10,0	8,5	14,0	22	6,5x45°	2,5x45°	31	14	12	6,5	
FW 45 50	16,0	M6	36	17	15	8,5	12,5	8,5	20,0	32	6,5x45°	3x45°	35	18	17	6,5	
FW 45 75	22,5	M10	46	22	20	11,0	20,0	11,0	31,5	45	11x45°	3x45°	45	23	22	11,0	
FW 45 100	31,0	M12	56	27	25	13,5	25,0	13,5	40,0	62	13x45°	5x45°	55	28	27	13,0	
FW 45 125	43,5	M12	66	36	25	18,0	31,5	18,0	50,0	87	13x45°	5x45°	65	29	36	13,0	



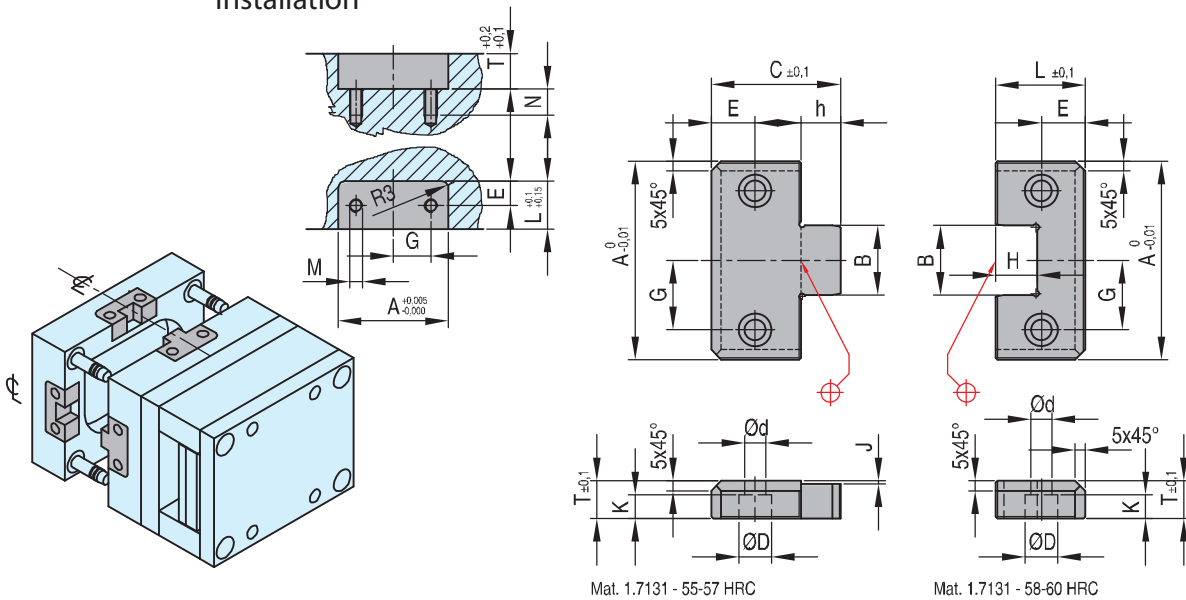
SSI

Straight interlocks - Set

Mat.: 1.7131



Installation



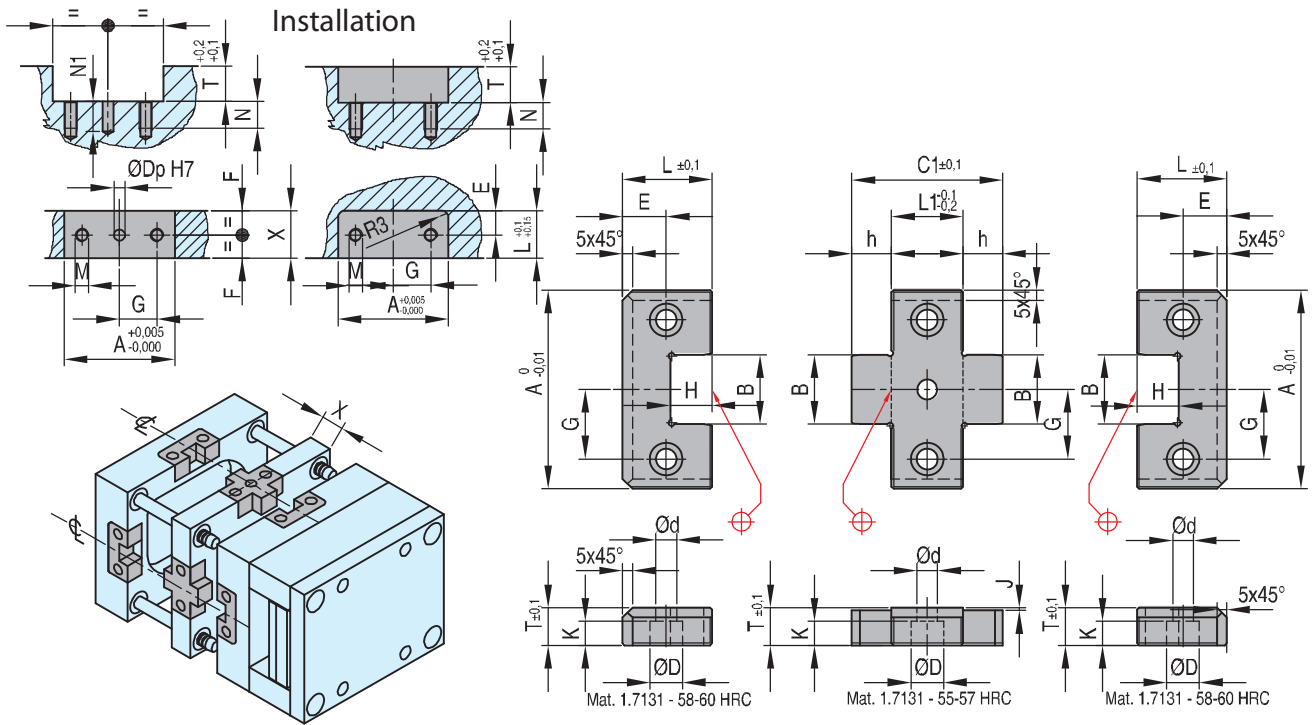
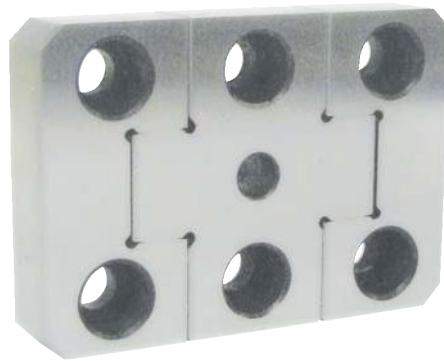
REF	A	G	E	M	L	T	N	B	C	d	D	h	H	J	K
SSI 50	50	17	11	M6	21,5	16	15	17	30	6,5	10,5	8,5	9,5	1,5	8
SSI 75	75	25	18	M10	36,0	19	20	25	50	10,5	16,5	14,0	15,0	1,5	12
SSI 100	100	35	22	M10	45,0	19	20	35	65	10,5	16,5	20,0	21,0	1,5	12
SSI 125	125	42	22	M10	45,0	25	20	45	65	10,5	16,5	20,0	21,0	1,5	12



Straight interlocks - Set

Mat.: 1.7131

XSI



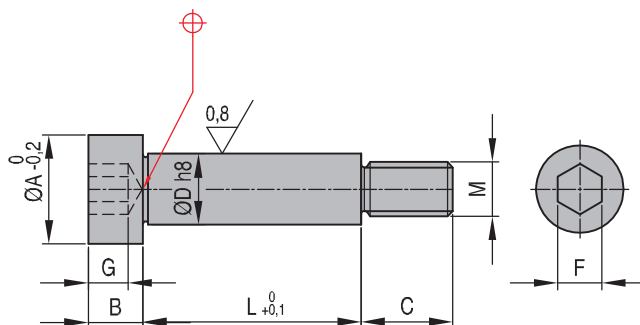
REF	A	X	B	C1	D	d	E	F	G	h	H	J	K	L	L1	T	M	N	Dp	N1
XSI 5026	50	26	17	43	10,5	6,5	11	13	17	8,5	9,5	1,5	8	21,5	26	16	M6	15	6	17
XSI 5036	50	36	17	53	10,5	6,5	11	18	17	8,5	9,5	1,5	8	21,5	36	16	M6	15	6	17
XSI 7526	75	26	25	54	16,5	10,5	18	13	25	14,0	15,0	1,5	12	36,0	26	19	M10	20	10	22
XSI 7536	75	36	25	64	16,5	10,5	18	18	25	14,0	15,0	1,5	12	36,0	36	19	M10	20	10	22
XSI 10036	100	36	35	76	16,5	10,5	22	18	35	20,0	21,0	1,5	12	45,0	36	19	M10	20	10	22
XSI 10046	100	46	35	86	16,5	10,5	22	23	35	20,0	21,0	1,5	12	45,0	46	19	M10	20	10	22
XSI 12536	125	36	45	76	16,5	10,5	22	18	42	20,0	21,0	1,5	12	45,0	36	25	M10	20	12	22
XSI 12546	125	46	45	86	16,5	10,5	22	23	42	20,0	21,0	1,5	12	45,0	46	25	M10	20	12	22



PM

Shoulder screws

Mat: 35 NC 6 ±1100-1200 N/mm²



REF M x L	A	B	C	D	F	G
PM 5x6	9	4	8	6	3	2,5
PM 5x8	9	4	8	6	3	2,5
PM 5x10	9	4	8	6	3	2,5
PM 5x12	9	4	8	6	3	2,5
PM 5x14	9	4	8	6	3	2,5
PM 5x16	9	4	8	6	3	2,5
PM 5x20	9	4	8	6	3	2,5
PM 5x25	9	4	8	6	3	2,5
PM 5x30	9	4	8	6	3	2,5
PM 5x32	9	4	8	6	3	2,5
PM 5x40	9	4	8	6	3	2,5
PM 5x50	9	4	8	6	3	2,5
PM 5x60	9	4	8	6	3	2,5
PM 5x63	9	4	8	6	3	2,5
PM 6x6	11	5	10	8	4	3,0
PM 6x8	11	5	10	8	4	3,0
PM 6x10	11	5	10	8	4	3,0
PM 6x12	11	5	10	8	4	3,0
PM 6x14	11	5	10	8	4	3,0
PM 6x16	11	5	10	8	4	3,0
PM 6x20	11	5	10	8	4	3,0
PM 6x25	11	5	10	8	4	3,0
PM 6x30	11	5	10	8	4	3,0
PM 6x32	11	5	10	8	4	3,0
PM 6x40	11	5	10	8	4	3,0
PM 6x50	11	5	10	8	4	3,0
PM 6x60	11	5	10	8	4	3,0
PM 6x70	11	5	10	8	4	3,0
PM 6x80	11	5	10	8	4	3,0
PM 6x90	11	5	10	8	4	3,0
PM 6x100	11	5	10	8	4	3,0
PM 6x110	11	5	10	8	4	3,0
PM 8x6	14	6	12	10	5	4,0
PM 8x8	14	6	12	10	5	4,0
PM 8x10	14	6	12	10	5	4,0
PM 8x12	14	6	12	10	5	4,0
PM 8x14	14	6	12	10	5	4,0
PM 8x16	14	6	12	10	5	4,0
PM 8x20	14	6	12	10	5	4,0
PM 8x25	14	6	12	10	5	4,0
PM 8x30	14	6	12	10	5	4,0
PM 8x32	14	6	12	10	5	4,0
PM 8x40	14	6	12	10	5	4,0
PM 8x50	14	6	12	10	5	4,0
PM 8x60	14	6	12	10	5	4,0
PM 8x70	14	6	12	10	5	4,0
PM 8x80	14	6	12	10	5	4,0
PM 8x90	14	6	12	10	5	4,0
PM 8x100	14	6	12	10	5	4,0
PM 8x110	14	6	12	10	5	4,0

REF M x L	A	B	C	D	F	G
PM 8x120	14	6	12	10	5	4,0
PM 8x125	14	6	12	10	5	4,0
PM 8x140	14	6	12	10	5	4,0
PM 8x160	14	6	12	10	5	4,0
PM 10x8	18	8	16	12	6	5,0
PM 10x10	18	8	16	12	6	5,0
PM 10x12	18	8	16	12	6	5,0
PM 10x14	18	8	16	12	6	5,0
PM 10x16	18	8	16	12	6	5,0
PM 10x20	18	8	16	12	6	5,0
PM 10x25	18	8	16	12	6	5,0
PM 10x30	18	8	16	12	6	5,0
PM 10x32	18	8	16	12	6	5,0
PM 10x40	18	8	16	12	6	5,0
PM 10x50	18	8	16	12	6	5,0
PM 10x60	18	8	16	12	6	5,0
PM 10x70	18	8	16	12	6	5,0
PM 10x80	18	8	16	12	6	5,0
PM 10x90	18	8	16	12	6	5,0
PM 10x100	18	8	16	12	6	5,0
PM 10x110	18	8	16	12	6	5,0
PM 10x120	18	8	16	12	6	5,0
PM 10x125	18	8	16	12	6	5,0
PM 10x140	18	8	16	12	6	5,0
PM 10x160	18	8	16	12	6	5,0
PM 10x200	18	8	16	12	6	5,0
PM 12x10	22	10	20	16	8	6,0
PM 12x12	22	10	20	16	8	6,0
PM 12x14	22	10	20	16	8	6,0
PM 12x16	22	10	20	16	8	6,0
PM 12x20	22	10	20	16	8	6,0
PM 12x25	22	10	20	16	8	6,0
PM 12x30	22	10	20	16	8	6,0
PM 12x32	22	10	20	16	8	6,0
PM 12x40	22	10	20	16	8	6,0
PM 12x50	22	10	20	16	8	6,0
PM 12x60	22	10	20	16	8	6,0
PM 12x70	22	10	20	16	8	6,0
PM 12x80	22	10	20	16	8	6,0
PM 12x90	22	10	20	16	8	6,0
PM 12x100	22	10	20	16	8	6,0
PM 12x110	22	10	20	16	8	6,0
PM 12x120	22	10	20	16	8	6,0
PM 12x125	22	10	20	16	8	6,0
PM 12x140	22	10	20	16	8	6,0
PM 12x160	22	10	20	16	8	6,0
PM 12x200	22	10	20	16	8	6,0
PM 12x250	22	10	20	16	8	6,0
PM 16x16	28	12	25	20	10	8,0
PM 16x20	28	12	25	20	10	8,0

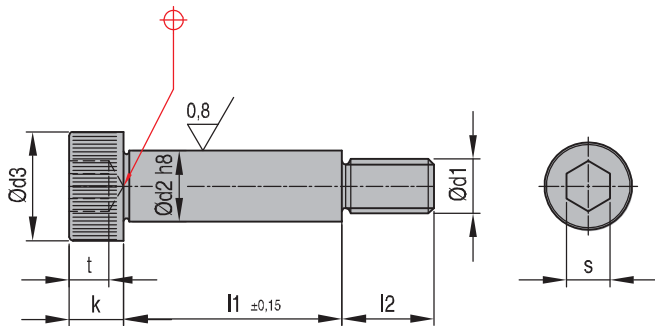
REF M x L	A	B	C	D	F	G
PM 16x25	28	12	25	20	10	8,0
PM 16x30	28	12	25	20	10	8,0
PM 16x32	28	12	25	20	10	8,0
PM 16x40	28	12	25	20	10	8,0
PM 16x50	28	12	25	20	10	8,0
PM 16x60	28	12	25	20	10	8,0
PM 16x70	28	12	25	20	10	8,0
PM 16x80	28	12	25	20	10	8,0
PM 16x90	28	12	25	20	10	8,0
PM 16x100	28	12	25	20	10	8,0
PM 16x110	28	12	25	20	10	8,0
PM 16x120	28	12	25	20	10	8,0
PM 16x125	28	12	25	20	10	8,0
PM 16x140	28	12	25	20	10	8,0
PM 16x160	28	12	25	20	10	8,0
PM 16x200	28	12	25	20	10	8,0
PM 16x250	28	12	25	20	10	8,0
PM 20x20	36	16	32	25	14	11,0
PM 20x25	36	16	32	25	14	11,0
PM 20x30	36	16	32	25	14	11,0
PM 20x32	36	16	32	25	14	11,0
PM 20x40	36	16	32	25	14	11,0
PM 20x50	36	16	32	25	14	11,0
PM 20x60	36	16	32	25	14	11,0
PM 20x70	36	16	32	25	14	11,0
PM 20x80	36	16	32	25	14	11,0
PM 20x90	36	16	32	25	14	11,0
PM 20x100	36	16	32	25	14	11,0
PM 20x110	36	16	32	25	14	11,0
PM 20x120	36	16	32	25	14	11,0
PM 20x125	36	16	32	25	14	11,0
PM 20x140	36	16	32	25	14	11,0
PM 20x160	36	16	32	25	14	11,0
PM 20x200	36	16	32	25	14	11,0
PM 20x250	36	16	32	25	14	11,0
PM 24x50	45	20	40	32	17	12,0
PM 24x60	45	20	40	32	17	12,0
PM 24x70	45	20	40	32	17	12,0
PM 24x80	45	20	40	32	17	12,0
PM 24x90	45	20	40	32	17	12,0
PM 24x100	45	20	40	32	17	12,0
PM 24x110	45	20	40	32	17	12,0
PM 24x120	45	20	40	32	17	12,0
PM 24x125	45	20	40	32	17	12,0
PM 24x160	45	20	40	32	17	12,0
PM 24x200	45	20	40	32	17	12,0
PM 24x250	45	20	40	32	17	12,0



Shoulder screws

 Mat.: Case hardening steel 12.9
DIN 267

WZ 412



REF d2 x l1	d1	d3	k	l2	S	tmin
WZ 412-6x10	M5	10	4,5	9,5	3	2,4
WZ 412-6x16	M5	10	4,5	9,5	3	2,4
WZ 412-6x20	M5	10	4,5	9,5	3	2,4
WZ 412-6x25	M5	10	4,5	9,5	3	2,4
WZ 412-6x30	M5	10	4,5	9,5	3	2,4
WZ 412-6x40	M5	10	4,5	9,5	3	2,4
WZ 412-6x50	M5	10	4,5	9,5	3	2,4
WZ 412-6x60	M5	10	4,5	9,5	3	2,4
WZ 412-8x16	M6	13	5,5	11,0	4	3,3
WZ 412-8x20	M6	13	5,5	11,0	4	3,3
WZ 412-8x25	M6	13	5,5	11,0	4	3,3
WZ 412-8x30	M6	13	5,5	11,0	4	3,3
WZ 412-8x40	M6	13	5,5	11,0	4	3,3
WZ 412-8x50	M6	13	5,5	11,0	4	3,3
WZ 412-8x60	M6	13	5,5	11,0	4	3,3
WZ 412-8x70	M6	13	5,5	11,0	4	3,3
WZ 412-8x80	M6	13	5,5	11,0	4	3,3
WZ 412-8x90	M6	13	5,5	11,0	4	3,3
WZ 412-8x100	M6	13	5,5	11,0	4	3,3
WZ 412-10x16	M8	16	7,0	13,0	5	4,1
WZ 412-10x20	M8	16	7,0	13,0	5	4,1
WZ 412-10x25	M8	16	7,0	13,0	5	4,1
WZ 412-10x30	M8	16	7,0	13,0	5	4,1
WZ 412-10x40	M8	16	7,0	13,0	5	4,1
WZ 412-10x50	M8	16	7,0	13,0	5	4,1
WZ 412-10x60	M8	16	7,0	13,0	5	4,1
WZ 412-10x70	M8	16	7,0	13,0	5	4,1
WZ 412-10x80	M8	16	7,0	13,0	5	4,1
WZ 412-10x90	M8	16	7,0	13,0	5	4,1
WZ 412-10x100	M8	16	7,0	13,0	5	4,1
WZ 412-12x16	M10	18	9,0	16,0	6	4,9
WZ 412-12x20	M10	18	9,0	16,0	6	4,9
WZ 412-12x25	M10	18	9,0	16,0	6	4,9

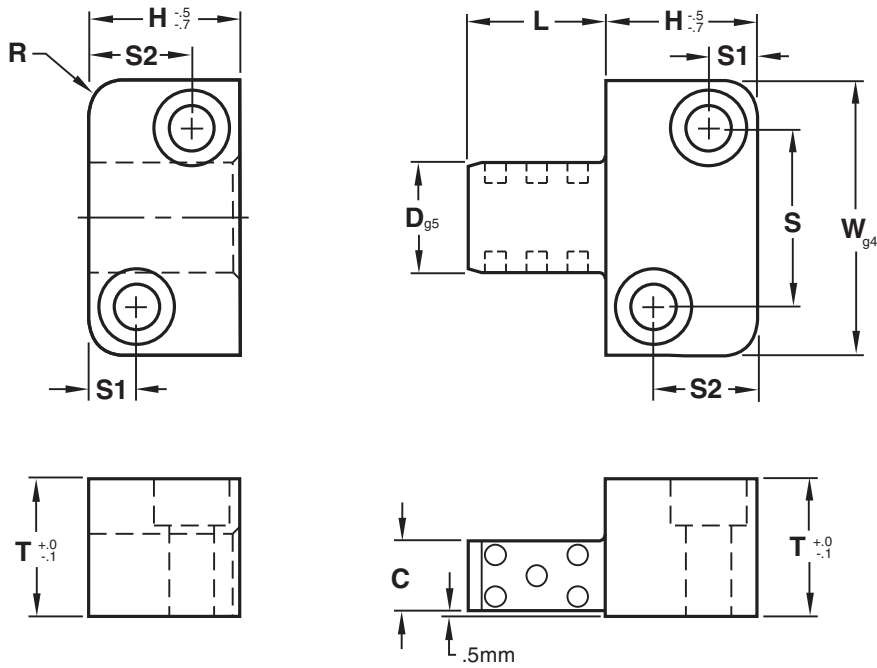
REF d2 x l1	d1	d3	k	l2	S	tmin
WZ 412-12x30	M10	18	9,0	16,0	6	4,9
WZ 412-12x40	M10	18	9,0	16,0	6	4,9
WZ 412-12x50	M10	18	9,0	16,0	6	4,9
WZ 412-12x60	M10	18	9,0	16,0	6	4,9
WZ 412-12x70	M10	18	9,0	16,0	6	4,9
WZ 412-12x80	M10	18	9,0	16,0	6	4,9
WZ 412-12x90	M10	18	9,0	16,0	6	4,9
WZ 412-12x100	M10	18	9,0	16,0	6	4,9
WZ 412-12x120	M10	18	9,0	16,0	6	4,9
WZ 412-16x30	M12	24	11,0	18,0	8	6,2
WZ 412-16x40	M12	24	11,0	18,0	8	6,2
WZ 412-16x50	M12	24	11,0	18,0	8	6,2
WZ 412-16x60	M12	24	11,0	18,0	8	6,2
WZ 412-16x70	M12	24	11,0	18,0	8	6,2
WZ 412-16x80	M12	24	11,0	18,0	8	6,2
WZ 412-16x90	M12	24	11,0	18,0	8	6,2
WZ 412-16x100	M12	24	11,0	18,0	8	6,2
WZ 412-16x120	M12	24	11,0	18,0	8	6,2
WZ 412-20x40	M16	30	14,0	22,0	10	8,8
WZ 412-20x50	M16	30	14,0	22,0	10	8,8
WZ 412-20x60	M16	30	14,0	22,0	10	8,8
WZ 412-20x70	M16	30	14,0	22,0	10	8,8
WZ 412-20x80	M16	30	14,0	22,0	10	8,8
WZ 412-20x90	M16	30	14,0	22,0	10	8,8
WZ 412-20x100	M16	30	14,0	22,0	10	8,8
WZ 412-20x120	M20	36	16,0	27,0	12	10
WZ 412-24x50	M20	36	16,0	27,0	12	10
WZ 412-24x60	M20	36	16,0	27,0	12	10
WZ 412-24x70	M20	36	16,0	27,0	12	10
WZ 412-24x80	M20	36	16,0	27,0	12	10
WZ 412-24x90	M20	36	16,0	27,0	12	10
WZ 412-24x100	M20	36	16,0	27,0	12	10
WZ 412-24x120	M20	36	16,0	27,0	12	10



GPSL

Graphite plugged Side locks

56-60 HRC



REF	L	D	T	W	C	H	S1	S2	S	R	Screw size
GPSL16x20	20	16	20	40	11	22	7	15	26	6	M6-1,0x25
GPSL16x40	40	16	20	40	11	22	7	15	26	6	M6-1,0x25
GPSL20x25	25	20	22	45	13	27	7	19	31	6	M6-1,0x25
GPSL20x50	50	20	22	45	13	27	7	19	31	6	M6-1,0x25
GPSL25x32	32	25	25	50	14	36	9	27	35	8	M6-1,0x30
GPSL25x63	63	25	25	50	14	36	9	27	35	8	M6-1,0x30
GPSL32x40	40	32	32	63	19	46	11	35	45	8	M8-1,25x35
GPSL32x80	80	32	32	63	19	46	11	35	45	8	M8-1,25x35
GPSL40x50	50	40	36	85	22	56	15	40	60	10	M10-1,5x40
GPSL40x100	100	40	36	85	22	56	15	40	60	10	M10-1,5x40
GPSL50x56	56	50	40	100	24	66	18	48	74	10	M12-1,75x45
GPSL50x112	112	50	40	100	24	66	18	48	74	10	M12-1,75x45

Screws included

Using grease will inhibit the function of the graphite plugs. Instead, use a light 20 weight oil at startup to begin lubrication.



Black & Gold side interlocks

BGS

Female Interlock – Material:

D2 Steel Heat Treat: Core Hardened to 57-61 HRC
Surface Treatment: TiN – Titanium Nitride Coated

Male Interlock – Material:

AISI H-13 Steel Heat Treat: 40-44 HRC
Surface Treatment: Melonite (SBN)

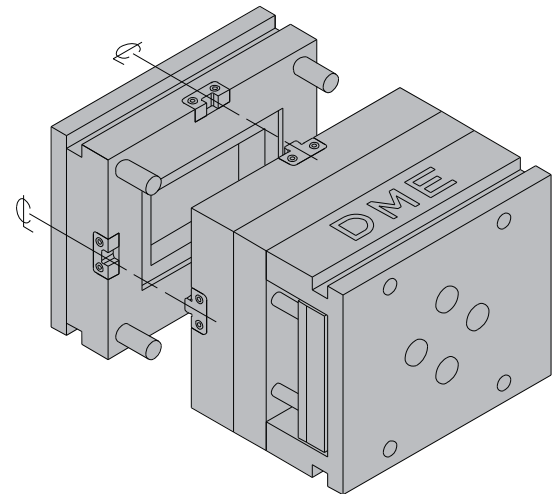
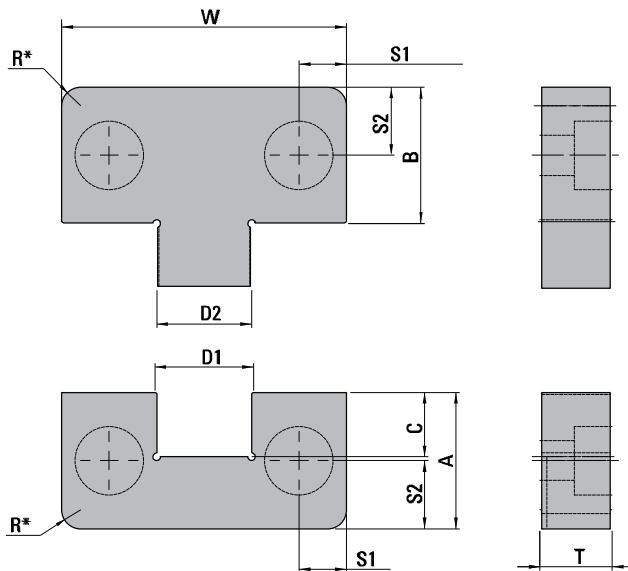
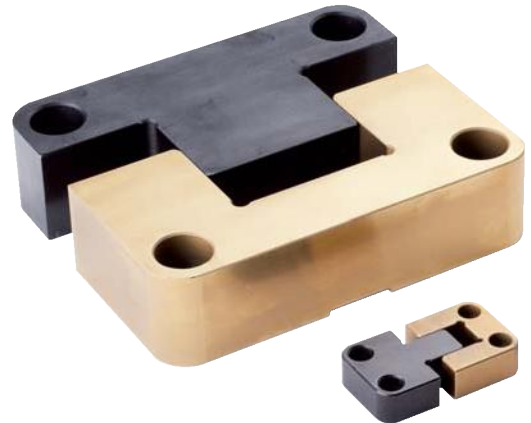
Thanks to precision manufacturing and precision tolerancing, every **DME** mold interlock component can be replaced independently, eliminating the need to swap out an entire set.

DME Side Interlocks provide:

- Accurate alignment of mold halves
- Easy installation
- Industry-compatible sizes

Installation

- Install four (4) Side Interlocks per mold (one per side)
- Install Side Interlocks on the Center Line of each side of the mold



* Part radius "R" is 1.00mm larger than recommended pocket radius.

REF	T +0,00 -0,05	W +0,00 -0,01	A +0,00 -0,05	B +0,00 -0,05	C +0,50 +0,20	D1 +0,005 +0,002	D2 -0,005 -0,002	R Pocket Radius +0/-0,5	S1 ±0,2	S2 ±0,2	SHCS
BGS05016	16	50	21,5	21,5	12	17	17	5	8,0	11	M6-1,0x20LG
BGS07519	19	75	36,0	36,0	17	25	25	5	12,5	18	M10-1,5x25LG
BGS10019	19	100	45,0	45,0	23	35	35	5	15,0	22	M10-1,5x25LG
BGS12525	25	125	45,0	45,0	23	35	35	5	20,5	22	M10-1,5x30LG

NOTE: To order an individual Male interlock, add the suffix "M" to the REF. To order an individual Female interlock, add the suffix "F" to the REF



BGT

Black & Gold top interlocks



Female Interlock – Material:

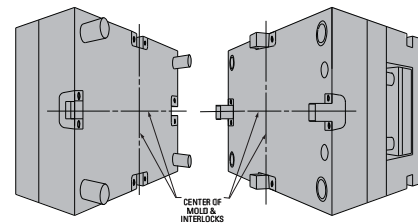
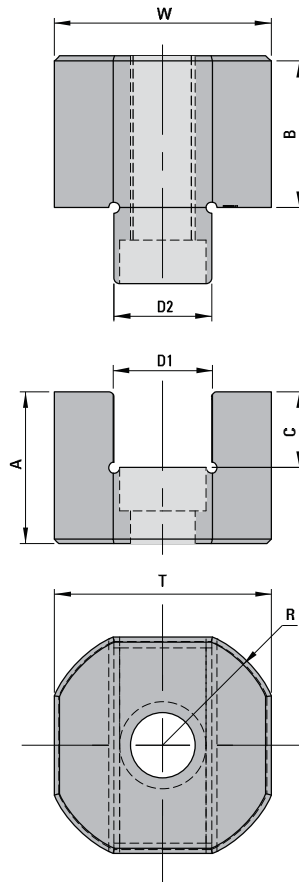
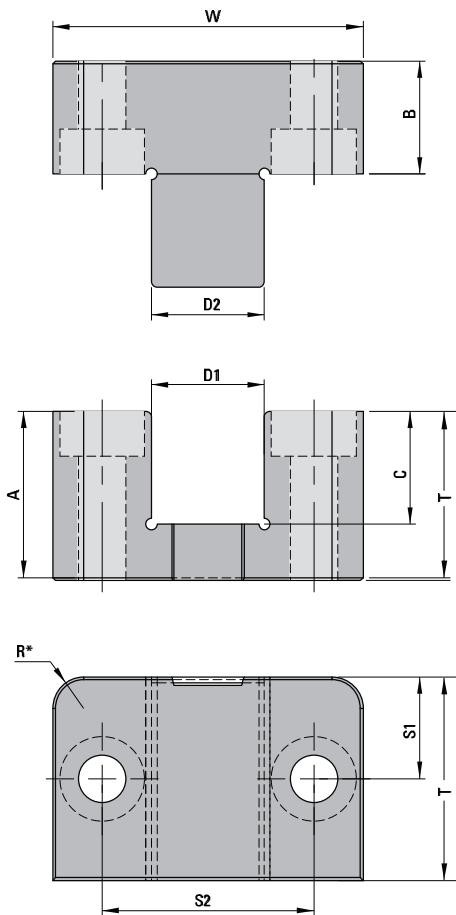
D2 Steel Heat Treat: Core Hardened to 57-61 HRC
Surface Treatment: TiN – Titanium Nitride Coated

Male Interlock – Material:

AISI H-13 Steel Heat Treat: 40-44 HRC
Surface Treatment: Melonite (SBN)

Installation

- Install four (4) top Interlocks per mold (one per side)
- Install top Interlocks on the Center Line of each side of the mold



* Part radius "R" is 1.00mm larger than recommended pocket radius.

REF	T +0,00 -0,05	W +0,00 -0,01	A +0,00 -0,05	B +0,00 -0,05	C +0,50 +0,20	D1 +0,005 +0,002	D2 -0,005 -0,002	R Pocket Radius +0/-0,5	S1 ±0,2	S2 ±0,2	SHCS (F)	SHCS (M)
BGT02020	20	20	14	14	7	9	9	5	-	-	M4x12LG	M4x25LG
BGT03526	26	35	25	15	16	11	11	8	13	23,0	M5x30LG	M5x20LG
BGT04530	30	45	25	15	16	15	15	8	15	30,0	M6x30LG	M6x18LG
BGT05536	36	55	30	20	20	20	20	8	18	37,5	M8x35LG	M8x25LG
BGT07536	36	75	35	20	26	30	30	8	18	52,0	M10x40LG	M10x25LG
BGT10045	45	100	60	20	41	40	40	8	22,5	70,0	M10x65LG	M10x25LG

NOTE: To order an individual Male interlock, add the suffix "M" to the REF. To order an individual Female interlock, add the suffix "F" to the REF



Guide locks

BGGL

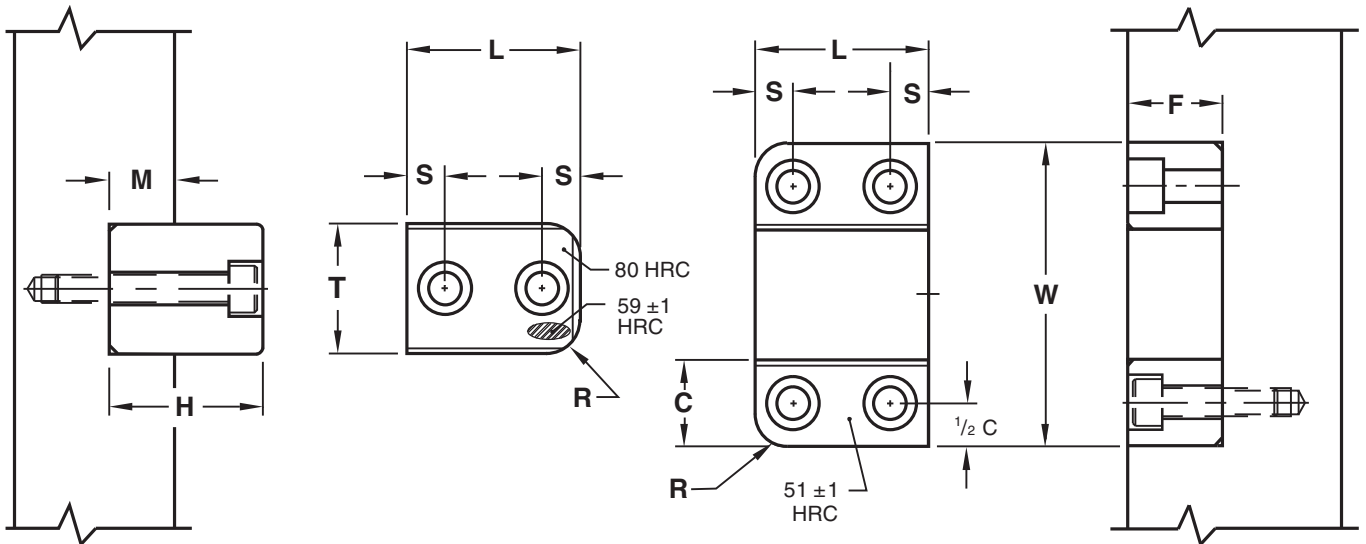
Female Interlock – Material:

O-2, 50-52 HRC - Black Oxide

Male Interlock – Material:

A-2, Core: 58-60 HRC, Surface: 80 HRC

Surface Treatment: Titanium Nitride Coated



REF	L +0,00 -0,25	W	C +0,00 -0,01	F +0,00 -0,12	T +0,00 -0,01	M	H -0,0 -0,2	S ±0,2	R Pocket Radius	SHCS (F)	SHCS (M)
BGGL25x45	25	45	15	15	15	10	24	7	4	M4x14	M4x25
BGGL40x65	40	65	20	20	25	15	34	10	9	M5x22	M5x35
BGGL50x90	50	90	25	25	40	20	44	10	9	M6x30	M6x45
BGGL65x160	65	160	55	30	50	25	54	15	14	M8x35	M8x60

Screws included



Additional option:

Guide Locks are also available with dual radii for mounting internally as shown at the left. To order, specify the REF followed by "R".
Ex. BGGL65X160-R.